

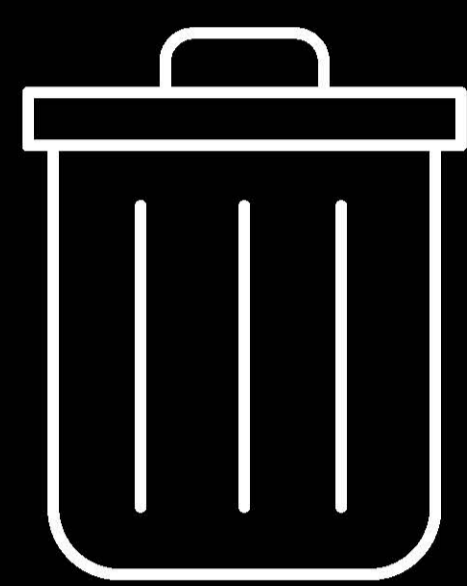
Going Green: Small Steps for Big Impact pledge

A collective commitment to sustainability and positive change.

At City & Guilds, we're proud to present this initiative, where individuals, businesses, and organisations join forces to reduce our carbon footprint, protect the environment and create a greener world.

Together, we have made remarkable progress in conserving energy, reducing waste, promoting sustainable transportation and adopting responsible consumption. Join us on this journey of Going Green and witness the power of collective action in shaping a sustainable future.

Pledge Snapshots



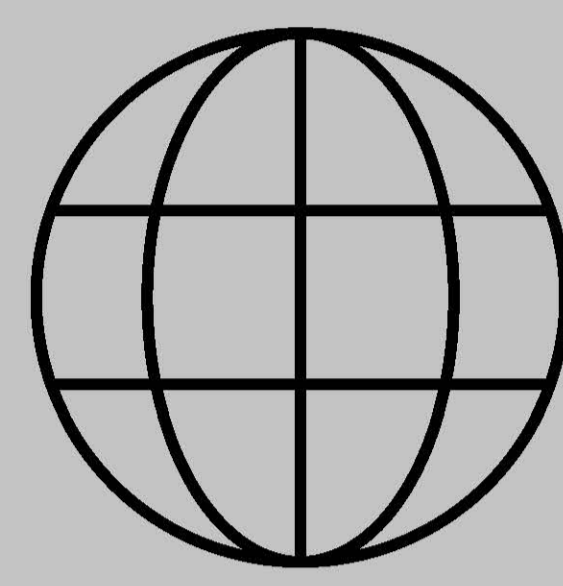
88%

of the pledges made involve actions aimed at reducing waste



1,400

Over 1,400 actions have been committed to so far through our Going Green pledge



12

Pledges have been made from 12 countries worldwide

Co2E Impact

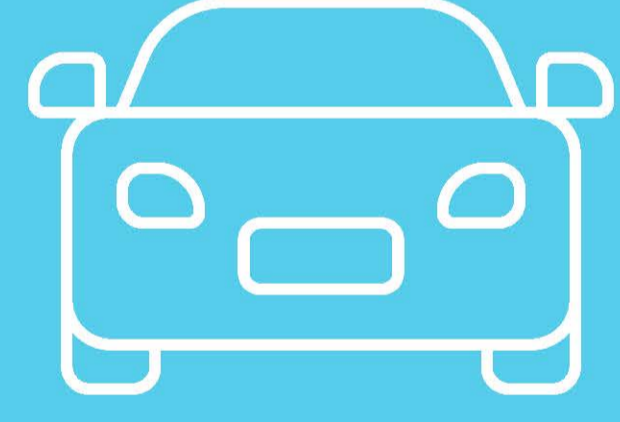
Carbon dioxide equivalent (CO₂e) is a metric used to measure total greenhouse gas emissions by equating different gases, like carbon dioxide, methane, and nitrous oxide, to the equivalent amount of carbon dioxide with similar global warming potential. It is a standard unit for measuring carbon footprints.



96.85 tonnes

CO₂e that has been collectively impacted by the Going Green pledges to date. (approximate figure)

Which is the equivalent to any one of the following...



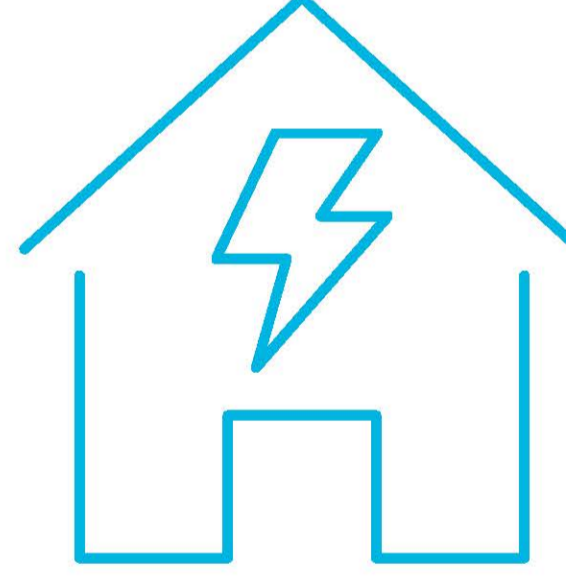
21

The annual emissions from 21 cars



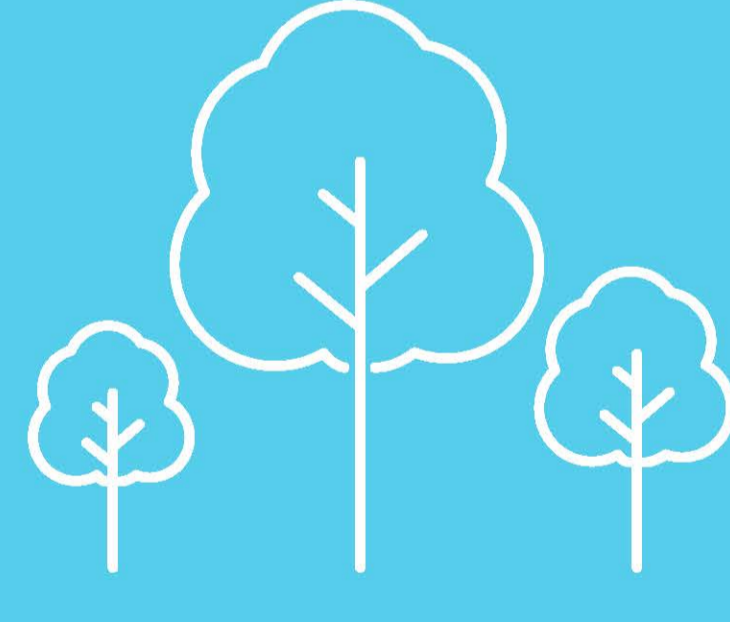
97

The annual emissions from 97 short haul flights



9

The annual electricity usage of 9 homes



4,400

The carbon sequestered by 4,400 trees in one year

Highest Impact Activities

The activities with the highest impact, calculated as a percentage of the total based on people and carbon emissions, were:



14%

by reducing food waste (by 50% in a year)

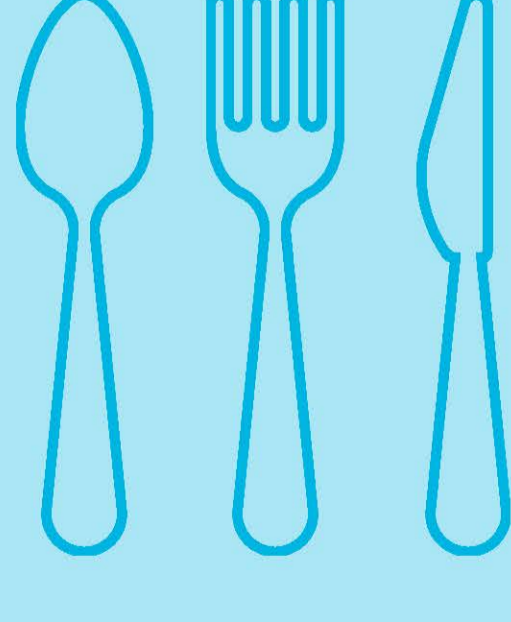
24%

by eating plant-based lunches (2 days a week)



8%

by reducing use of single-use plastics (by 50% in a year)



28%

by eating less red meat (abstaining 2 days a week)



Conclusion

Through collective action, individuals, businesses and organisations have driven positive change by reducing their carbon footprint and promoting sustainable practices. The impact of our Going Green

pledge demonstrates our potential when united in a shared commitment. Join us in taking the pledge and showcasing your impact and together we can create a greener, more sustainable world.

Let's make a difference, one pledge at a time

