

All about Construction

Newsletter – April Edition

April 2021
Issue 18



Welcome to the Easter edition of our All about Construction newsletter and do we have a newsletter for you, with so much to update everyone on. Can you believe we are now past Easter, having learners only return just over a month ago? We would like to echo our comments at Christmas and applaud the work our centres, their staff and their learners continue to do. Achievements this year are very special, and we wish the very best of luck to our centres and learners. And remember if you need our support, we are here for you.

In this issue:

- **Mitigation and Adaption- VRQs, NVQs and Technicals**
- **Traineeships**
- **Construction End Point Assessment Update**
- **Property Maintenance Operative Update**
- **T Level buzz update and webinar links**
- **New Level 1 C&J Enhanced SmartScreen**
- **Construction Green Skills Qualifications**
- **Construction `Go To Webinar` Channel**
- **Working with us as an Associate**
- **Showcase Centre- Tameside College**
- **Future events and webinars**
- **Get to know City & Guilds staff, tell us what you think**
- **Associate vacancies, connect with us and meet the construction team**

Mitigation and Adaptions- VRQs, NVQs and Technicals

We are continuing to work closely with the Government and regulators to overcome the ongoing challenges posed by Covid-19 to ensure that we can issue valid results for all our qualifications including VRQs, NVQs and Technicals.

Starting with VRQ and NVQ adaptations. Our adaptations guidance was released back in October 2020. You can find the Construction Adaptions guidance [here](#). The guidance has largely remained unchanged and is still currently in line with government and Ofqual guidance and regulations. With regards to NVQs the guidance is set by CITB within their addendum to the consolidated assessment strategy. You can find the CITB consolidated assessment strategy [here](#).

For our Technicals we have developed specific information for all Heads of Centre, Heads of Department and tutors on the determination and submission of Teacher Assessed Grades (TAG) for summer 2021. This guidance can be found [here](#) and is supported by our series of webinars (listed below) and our timeline guide that can be found [here](#).

Registration links for our up-and-coming Adaptions and Mitigations webinars covering all our construction qualifications are:

- Construction Alternative Assessment Arrangements 2020/2021 Update on 22nd April @1.30pm:
<https://attendee.gotowebinar.com/register/5991886885523278350>

Traineeships

As we know Traineeships are designed for young people and are an education and training programme created to help learners who are interested in securing an apprenticeship or employment. Traineeships are delivered typically as part of a 6-12-week programme. To support our centres and learners we created a Traineeship flyer which can be used to explain Traineeships to learners and parents/guardians. You can find our flyer [here](#).

We have also provided some exemplar Construction & BSE Traineeship programme plans. Highlighting the key areas including potential qualifications that could be covered. You can find our Construction programme plans [here](#) and you can view our presentation recording [here](#).

If you would like more information on Traineeships and how they can work for your learners, please contact your dedicated business manager or one of our Construction Technical Advisors.

Construction End Point Assessment Update

We are now very much in the mix of the new apprenticeship world and moving away from frameworks. Qualifications are being removed from on-programme delivery and in many circumstances are being replaced by portfolios of evidence covering the knowledge, skills and behaviours set out by the trailblazer group for the individual apprenticeship standards. This is bringing about some uncertainty for tutors, assessors, learners, and employers. To support you with this new way of on programme delivery we have provided guidance which is in our EPA Packs for Centres on our apprenticeship standards webpages. If you need further support with this please contact one of our Technical Advisors,

As we all know the new apprenticeship standards are assessed differently from the previous apprenticeship frameworks, allowing for holistic synoptic assessments known as End Point Assessments. We firmly believed that having your learners undertake their EPA in a familiar and comfortable environment is vitally important to them. This sentiment is also shared by our colleges, learners, and employers.

In early March we launched our new sliding scale pricing structure for all our Construction EPAs. We have where possible, passed on any cost savings we can make on to our customers and in turn produced a new sliding scale pricing model. The more learners you book onto an EPA day the greater the saving. We have provided a table depicting the saving percentages made across the EPA bookings. For further information on EPA prices please contact your dedicated business account manager who can support you.

Please visit our Construction Apprenticeship page [here](#) which



“Our first construction EPAs were made easier by having the facilities in-house and striking up an excellent relationship with the Independent End-Point Assessor who was great to work with.”

- Rob Smith, Apprenticeship Contracts Manager, Leeds College of Building

explains how we can support you with EPA.

Read about one of our recent EPA success stories [here](#).

	1:1 Ratio % Saving	1:2 Ratio % Saving	1:3 Ratio % Saving	1:4 Ratio % Saving	1:5 Ratio % Saving	1:6 Ratio % Saving
Bricklayer (9077-12)	£1375 0%	£1250 9%	£1175 15%	£1135 17%	£1110 19%	£1100 20%
Carpentry & Joinery (9078-12)	£695 0%	£625 10%	£595 14%	£580 17%		
Advanced Carpentry & Joinery (9079-12)	£695 0%	£625 10%	£595 14%	£580 17%		
Painter & Decorator (9080-12)	£1775 0%	£1600 10%	£1500 15%			
Plasterer (9086-11 & 12)	£1675 0%	£1500 10%	£1400 16%	£1350 19%		
Property Maintenance Op (9673-02)	£600 0%	£540 10%	£510 15%	£495 18%		

* Prices excluding £25 registration fee

Painting & Decorating and Plastering EPA

Due to feedback from our data and centres, EPAs will not be required urgently until after June 2021. Therefore, we are strategically planning further development to our EPAs and support material for these two sectors to ensure we have the best product and materials available for our centres, learners, and employers.

For both EPAs we remain open for EPA registrations, with EPA bookings being available from 1st June 2021 and EPA centre packs will also be available from 1st June. To support our centres and learners we will have support materials on our SmartScreen platform. On SmartScreen we will have Apprentice Training Manuals available from August 2021 and EPA exemplars from mid-July.

Property Maintenance Operative Update

Property Maintenance Operative (PMO) has recently undergone some changes to the on-programme delivery, the EPA, including resits and was included in the new pricing model as mentioned above.

Why have the changes been made? As we know all apprenticeship standards and EPAs are externally quality assured by an organisation chosen by IFATE. For PMO we attended a standardisation meeting with other EPAOs and the EQA for the PMO standard. Whilst our on-programme offer, and EPA were highlighted as excellent practice a few changes were required to both on-programme and EPA.

What has changed? For the on-programme qualification 9673-11 there were two amendments made. These included the word count of 750-1000 words added to the on-programme assignment and the addition of the employer authentication name and signature to the on-programme logbook. For our EPA we made the addition of three questions to the interview ensuring we fully covered the behaviours within the apprenticeship standard. The increase in the number of questions meant that we had to increase the time allowed for interview, which in turn has impacted on the overall timings for the EPA day, increasing it by 30 mins. You can watch a recent webinar recording where an update was provided [here](#).

T Level Update

We are excited with the progress underway with our September 2021 providers. If any of our providers have not yet completed their mandatory approval form, they can complete the document via this [link](#). For centres who have not yet completed the centre contact form they can do so [here](#).

In February our TA team including our Post-16 TA Alison Whittle and Michael Scarrott from EAL presented the latest webinar series which focused on curriculum planning and delivery models. The webinars were very well received and feedback from centres was extremely positive. If you missed our webinar you can watch a recording [here](#) and you can access the presentation [here](#). You can also access the exemplar curriculum plans [here](#) within our Teaching, learning and planning resources section. If you would like to view previous webinars and presentations, you can do so [here](#) within our webinar archive section.

Our next webinar series will focus on the Core Component and will be running a Construction Core Component Workshop. This session will take place via Microsoft Teams platform and is for our September 2021 providers **only**. If you would like to book a place on this session you can register [here](#).

New Level 1 C&J Enhanced SmartScreen

Have you seen our new enhanced Level 1 Carpentry & Joinery package on SmartScreen? We have worked with a Carpentry & Joinery industry expert to produce a series of step-by-step demonstration videos. These demonstration videos cover all the practical tasks within our Level 1 Carpentry & Joinery Diplomas 6706-13 qualification including, basic joints, maintain and use C&J hand tools, prepare and use C&J power tools and produce woodworking joints.

These videos are ideal for use either as a distance learning tool or to play in classrooms and workshops, so that learners can use them as a reference and can return to them as often as they need.

To access a sample demo of the videos please contact your dedicated business manager.



Construction Green Skills Qualifications

The Prime Minister set out his Ten Point Plan for a green industrial revolution, where the government outlined the importance of building back better and greener when the country recovers from COVID-19.

Skills will play a big part in this green recovery. The government is now planning to create and support 2 million good quality, green skill jobs by 2030 to support the UK to transition to net-zero and City & Guilds are here to support this skills development, as we always are. We are now conducting a research activity to collate the demand from our providers and customer. To collate this information, we have put together a short questionnaire and appreciate your input into this. You can share this questionnaire with colleagues to complete if required. You can access our questionnaire [here](#) or via the QR code. We invite you to complete it in as much detail as possible.



Construction `Go To Webinar` Channel

Did you know that we now have our very own Construction channel on the Go To Webinar platform? Our channel includes all our recorded webinars delivered by our Construction Team. These webinars cover all our construction portfolios including EPA, Technicals, T Levels, MoJ, Property Maintenance and general updates. Please visit our Construction channel [here](#).

Working with us as an Associate

Have you thought about using your experience and skills, working as an associate with City & Guilds? Often these work alongside other job roles and commitments and give you the opportunity to support in quality assurance and assessment.

We have a variety of roles available:

- Some are available at set times, and have set closing dates for consideration
- Some are available all year round, and we accept applications, which are then considered when there is an increased demand.

City & Guilds operate in many areas of construction, however also in many wider industry areas, therefore do share this with friends, colleagues, networks who might be interested in the opportunities we have available.

Visit <https://careers.cityandguildsgroup.com/associate-vacancies> for more information about

- Roles we have available
- Areas that we work in
- How to apply
- General guidance

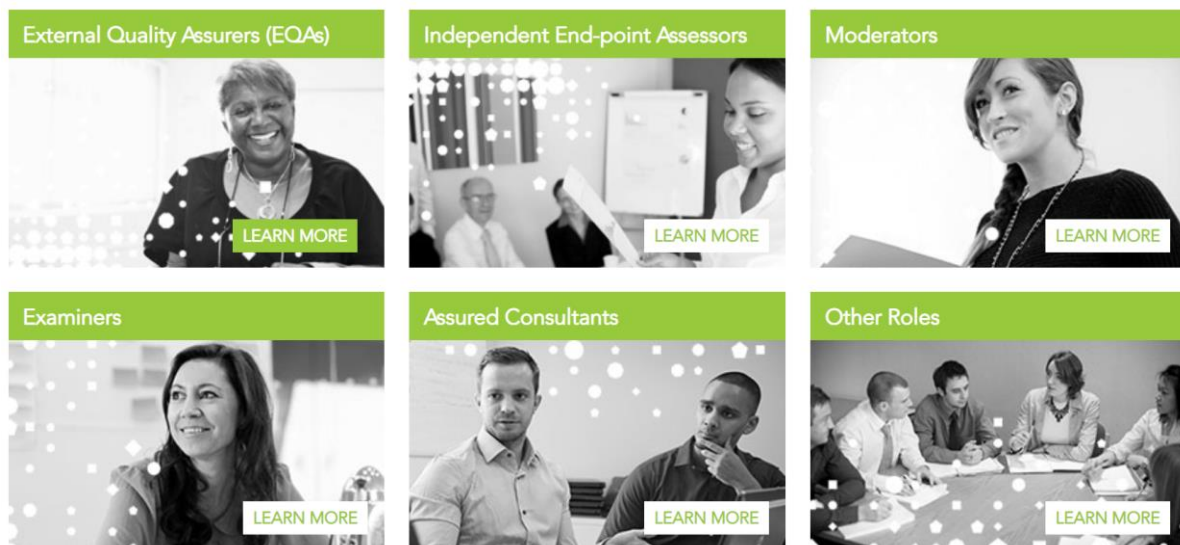
Current Focuses for EPA roles are:



- Brick Work (LIEPA and IEPAs)
- Painting/Decorating (LIEPA and IEPAs)
- RACHP (IEPAs)
- Gas Engineer (IEPAs)

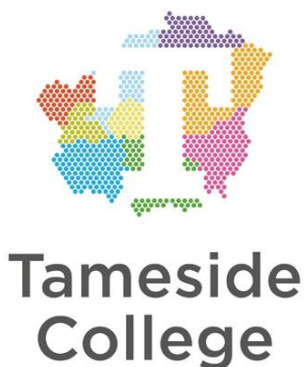
Just to note if you have already applied, we will contact you, so please bear with us.

If you would like more information on our vacancies you can visit our dedicated webpage [here](#), contact one of our



Our Centre Showcase

In this section of our newsletter, we will be showcasing representatives from the construction industry that work with City & Guilds. For this edition we are pleased to announce that Tameside College are featuring in our newsletter.



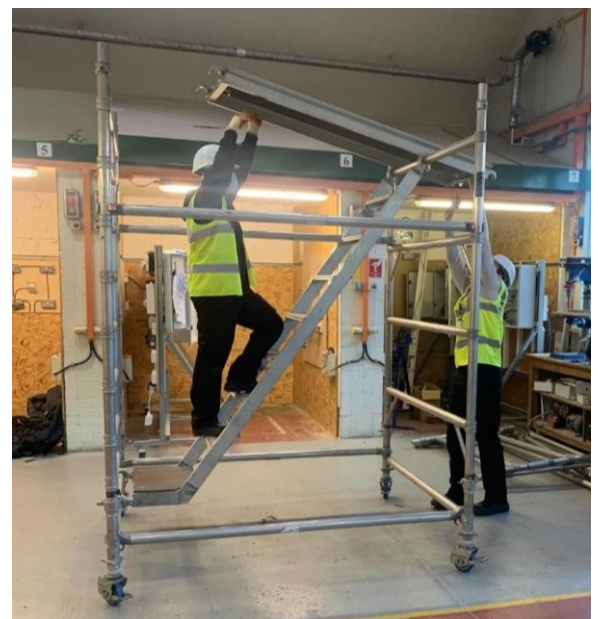
Here at Tameside College in East Manchester, our drive is progressing our full-time learners from their study programme to apprenticeships. We support our local employers with the recruitment of the candidate our Construction & Services teachers feel will suit their business and become an effective asset to their business. Years of driving, this has led to countless successes. One particular success is Harrison Turner. Harrison joined us in 2008 as a school links learner and progressed to the C&J study

programme. During this provision Harrison demonstrated his ability and hard work ethic and as a result was put forward for an architectural joinery Apprenticeship. From here, Harrison stayed with us to complete his HNC, which supported his successful recruitment with Wilmott Dixons to the role of Assistant Build



Manager. When Willmott Dixons was announced as the main Contractor to build our new £11 million Construction Skills Centre, Harrison was determined to be involved. After a discussion with his senior manager, Harrison was placed on the project. Five months into the build, Harrison has delivered many motivational talks discussing his journey and the opportunities within the Construction industry to our study programme learners.

We are a strong Construction department with a curriculum plan for 21/22 to educate and train over 900 learners. Our Provision includes Carpentry & Joinery (Site Carpentry, Architectural Joinery, & Fitted Furniture) Painting & Decorating, Brickwork, Electrical and Plumbing. We also offer the professional studies curriculum with the plan to introduce the Design, Surveying and Planning for Construction T-Level next academic year.



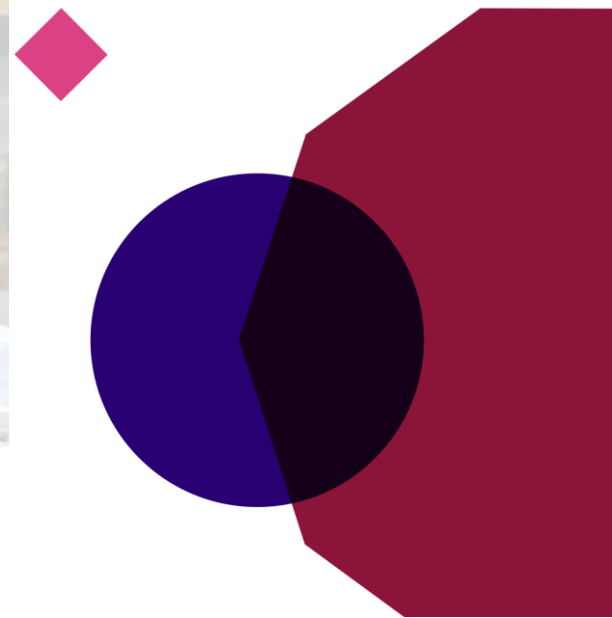
 A young man with short brown hair, wearing a blue shirt, is smiling and holding a yellow measuring tape. He is standing in a workshop or construction site.



 A City & Guilds Group Collaboration

"At Tameside College the credibility of our learners certifications is at the forefront when selecting our EPAO. City & Guilds are valued by employers across the world, and their customised support is second to none. Ten of our Carpentry & Joinery apprentices have now completed their EPAs and the service and learner experience has been exemplary. This is why City & Guilds are our chosen EPAO and we look forward to working with them in these changing and exciting times."

- Dean Donelon, Head of Construction & Building Services, Tameside College





Although we find ourselves in the most difficult of times, the construction industry continues to thrive with the skills shortage growing. Our college has reacted to this with the £11 million investment of our new Construction Skills Centre, which will host the industry's leading tooling and machinery.

If you would like to feature in future editions of our newsletter, please email construction@cityandguilds.com

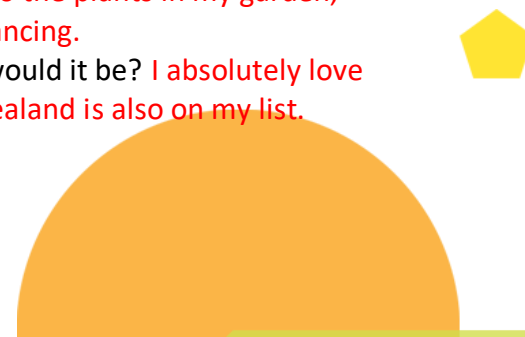
Future network events and webinars

Due to the current climate, we are converting (where possible) all our network events to webinars. Below is a list of the webinars planned and the links needed to register onto them. More webinars and online events will be added due to ongoing customer requests for support. You can also visit our LinkedIn and Twitter pages for future webinars. If your centre has any bespoke needs or you would like a 1-1 session with our TAs, then please contact them via their details in the `Meet the Team` section of the newsletter.

Get to know City & Guilds staff

This issue we caught up with Sarah Turner who is the Business Development Manager for the North West region, here at City & Guilds.

1. How long have you worked at City & Guilds? **6.5 years and it's flown by!**
2. Where did you work prior to City & Guilds? **A training provider in Manchester called the Growth Co.**
3. What is the best thing about working at City & Guilds? **The people without a doubt - my lovely customers and colleagues.**
4. What is your most prized possession? **My gorgeous 10-month-old Miniature Schnauzer puppy Monty.**
5. What do you like to do in your spare time? **Eat out, tend to the plants in my garden, go walking somewhere pretty, read books, watch films/TV, go dancing.**
6. If you could go on holiday anywhere in the world where would it be? **I absolutely love Bali and hope I get the chance to go there again one day. New Zealand is also on my list.**



7. What is your favourite film? **Oooh this is a tough one – there are too many! ‘It’s a wonderful life’ is definitely up there.**
8. What is your favourite food? **Another tough one. I really struggle with what’s your favourite questions as I have too many favourites, especially when it comes to food and films. If I have to choose, I’d say a bacon butty, closely followed by a roast Chicken or roast Pork dinner. Yum.**
9. When you were younger, what did you want to be when you grew up? **I wanted to be a police officer but being just under 5 ft I was too short to apply! Gutted. I believe they’ve quite rightly removed the height requirement nowadays.**
10. What is your go to karaoke song? **Anything by the Proclaimers but most often than not ‘I’m gonna be` (500 miles). My Dad’s Glaswegian and I do a great Scottish accent (well I think it’s great anyway lol).**

Tell us what you think

All About Construction is a newsletter that brings together the key developments from City & Guilds relevant to Construction skills learning across England, Scotland, Northern Ireland, Wales and Internationally. It contains updates on the range of teaching and learning resources we offer, plus relevant public policy or other information we think you might be interested in. Each edition is numbered, so we can refer to previous issues or tell you when information has been superseded. All our newsletters can be found on the website here.

Remember: If you are interested in supporting City & Guilds either as a consultant to writer, review, marker, moderator, or as an EQA please do get in touch with us at construction@cityandguilds.com

For specific queries and enquiries please contact our dedicated customer support team: CentreSupport@cityandguilds.com

If you would like to feature in our Centre Showcase or Industry Showcase sections of our newsletter, please email construction@cityandguilds.com

Associate Vacancies

LIEPAs and IEPAs



We are currently recruiting for Lead Independent End Point Assessors (LIEPA) and Independent End Point Assessors (IEPA) in the following trade areas:

- [Brickwork- LIEPA and IEPAs](#)
- [Carpentry & Joinery \(inc. Advanced\)- LIEPA and IEPAs](#)
- [Painting & Decorating- LIEPA and IEPA](#)
- [Plastering- LIEPA and IEPAs](#)

(The bullet points are hyperlinked to the vacancies)

If you would like to submit your details and apply for any Construction Associate roles at City & Guilds, please apply [here](#).

Connect with us

	Please follow us on twitter @ConstructionCG
	Please join our LinkedIn group for Construction and Utilities

Meet the Construction Team



Jason Howe
Technical Advisor
Jason.Howe@cityandguilds.com
07912042313



Ian Roberts
Technical Advisor
Ian.Roberts@cityandguilds.com
07826903967



Paul Brown
Technical Advisor
Paul.Brown@cityandguilds.com
07872463185



Naz Lewis-Humphrey
Industry Manager
Naz.Lewis-Humphrey@cityandguilds.com
07795590919

Every effort has been made to ensure that the information contained in this publication is true and correct at time of going to press. However, City & Guilds' products and services are subject to continuous development and improvement and the right is reserved to change products and services from time to time. City & Guilds cannot accept responsibility for any loss or damage arising from the use of information in this publication.

©2019 The City & Guilds of London Institute. All rights reserved. City & Guilds is a trade mark of the City & Guilds of London Institute, a charity established to promote education and training registered in England & Wales (312832) and Scotland (SC039576).
5-6 Giltspur Street, London EC1A 9DE.
cityandguilds.com