

Level 2 Hair Professional Standards

Hairdressing & Barbering

On-Programme & End-Point Assessment

Summary of assessment


Hair Professional Standard

Overview of the role

There are two distinctly different job roles within this occupational profile: Hairdresser and Barber. Hairdressers will be able to shampoo and condition hair, cut hair using a range of techniques, style and finish hair to create variety of looks, and colour and lighten hair for ladies and men. Barbers will be able to shampoo and condition hair, cut hair using barbering techniques, style and finish hair, cut facial hair into shape and provide shaving services for men

Route 1 – Hairdressing

Route 2 – Barbering

Status: Approved for delivery 

Level: **2**

Reference: ST0213

Version: 1.1

Date updated: 03/10/2018

Approved for delivery: 21 December 2016

Route: Hair and beauty

Typical duration to gateway: 24 months (this does not include EPA period)

Maximum funding: £7000



Print the occupational standard (including PDF)



Hair professional assessment plan

Published: 10 September 2019

File size: 985.4 KB

Hair Professional Standard

Overview of the role

Route 1 – Hairdressing

- Shampoo, condition and treat the hair and scalp
- Cut hair using a range of techniques to create a variety of looks
- Style and finish hair using a range of techniques to create a variety of looks
- Colour and lighten hair using a range of techniques

Options (choose one)

- Perming hair
- Hair relaxing treatments and techniques
- Hair extension services

Overview of the role

Route 2 – Barbering

- Shampoo, condition and treat the hair and scalp
- Cutting hair using barbering techniques to create a variety of looks
- Style and finish men's hair
- Cut facial hair into shape
- Shaving services

Our On-Programme (OP) offer

7002 - Level 2 Hair Professional	QAN
Level 2 Diploma for Hair Professionals – Hairdressing	603/1380/8
Level 2 Diploma for Hair Professionals – Barbering	603/1379/1

Our End-point Assessment (EPA) offer

7002-52 Hairdressing / 7002-53 Barbering – Level 2 Hair Professional
Level 2 Diploma for Hair Professionals – Hairdressing 7002-52
Level 2 Diploma for Hair Professionals – Barbering 7002-53

Hairdressing

Level 2 Diploma for the Hair Professional – Hairdressing

City & Guilds unit number	Unit title	GLH
Mandatory		
201	Consultation	60
202	Shampoo, condition and treat the hair and scalp	40
203	Cut hair using a range of techniques to create a variety of looks	180
204	Style and finish hair using a range of techniques to achieve a variety of looks	140
205	Colour and lighten hair using a range of techniques	180
Optional	plus, one optional unit	
206	Perming hair	93
207	Hair relaxing treatments and techniques	82
208	Hair extension services	90

All Technical Skills must be achieved at a minimum of pass for the apprenticeship to be achieved

Theme		Grade scale	% contribution
Ways of working		X/P/D	5%
	Consultation	X/P/D	10%
Technical skills	Shampoo, condition and treat hair and scalp	X/P	0%
	Cut hair using a range of techniques to create a variety of looks	X/P/D	20%
	Style and finish hair using a range of techniques to create a variety of looks	X/P/D	15%
	Colour and lighten hair using a range of techniques	X/P/D	25%
Understanding		X/P/D	20%
Customer service		X/P/D	5%

Hairdressing end-point assessment

Detailed explanation of the end-point assessment

The end-point assessment stage will provide a 'snap shot' holistic assessment of the learner's practical skills, similar to an industry trade test. The learner will demonstrate he/she can complete a range of services on a number of models to industry standards and within commercial timings. The learner's consultation skills, communication skills, safe working practices, professionalism, values and behaviours will be integrated into the end-point assessment.

Route 1: Hairdressing end-point assessment

The learner will be assessed carrying out consultation for **all** services completed during the assessment. The learner must shampoo and condition hair as part of at least **one** service of the end assessment, this maybe more as appropriate.

The end-point assessment test the skills knowledge and behaviours set out in the standard

1. Practical assessment

2. Oral questioning

by the Independent Assessment Examiner while the learner carries out the following services

Each theme will be graded individually and each result converted into points

Theme	Pass	Distinction
Ways of working	25	35
Consultation	50	70
Cut hair using a range of techniques to create a variety of looks	100	140
Style and finish hair using a range of techniques to create a variety of looks	75	105
Colour and lighten hair using a range of techniques	125	175
Understanding	100	140
Customer service	25	35

Apprenticeship Grade	Points
Distinction	634-700
Pass	500-633
Fail	0-499

End-point Assessment feedback form

Level 2 Diploma for Hair Professionals – Hairdressing (End-Point Assessment - with centre venue)

Apprentice name		Enrolment number	
IEPA name		Date	Click or tap to enter a date.



Theme		Fail		Pass		Distinction	
Ways of working		0	<input type="checkbox"/>	25	<input type="checkbox"/>	35	<input checked="" type="checkbox"/>
	Consultation	0	<input type="checkbox"/>	50	<input type="checkbox"/>	70	<input checked="" type="checkbox"/>
	Shampoo, condition and treat hair and scalp	0	<input type="checkbox"/>	0	<input checked="" type="checkbox"/>		
Technical skills	Cut hair using a range of techniques to create a variety of looks	0	<input type="checkbox"/>	100	<input type="checkbox"/>	140	<input checked="" type="checkbox"/>
	Style and finish hair using a range of techniques to create a variety of looks	0	<input type="checkbox"/>	75	<input checked="" type="checkbox"/>	105	<input type="checkbox"/>
	Colour and lighten hair using a range of techniques	0	<input type="checkbox"/>	125	<input type="checkbox"/>	175	<input checked="" type="checkbox"/>
Understanding		0	<input type="checkbox"/>	100	<input type="checkbox"/>	140	<input checked="" type="checkbox"/>
Customer service		0	<input type="checkbox"/>	25	<input type="checkbox"/>	35	<input checked="" type="checkbox"/>

All pass criteria must be met for the apprentice to achieve their EPA.

Total score	670
Overall grade	Distinction

Apprenticeship Grade	Points
Distinction	634-700
Pass	500-633
Fail	0-499



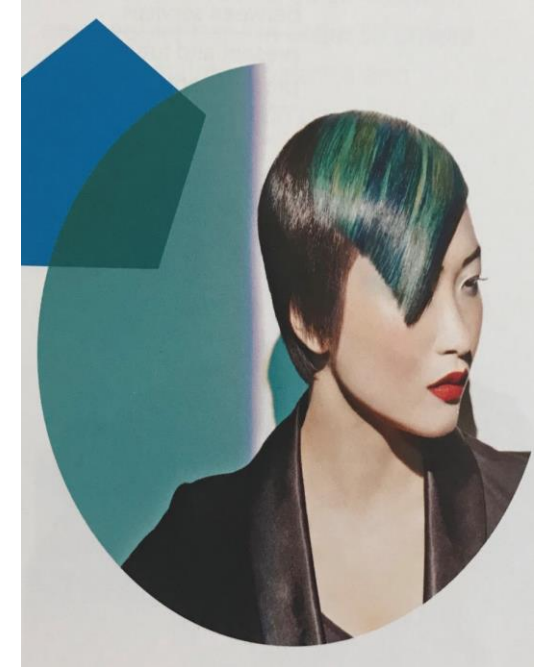
End Point Assessment - Hairdressing

Consult, shampoo and condition hair will also be included in the assessment.

Cut hair using a range of techniques to create a variety of looks

Style and finish hair using a range of techniques to create a variety of looks

Colour and lighten hair using a range of techniques



Hairdressing end-point assessment

Reference to the Standard	Service	Specific requirements
Cut hair using a range of techniques to create a variety of looks	One creative restyle and finish using a minimum of three cutting techniques	The creative restyle should be finished to complement the style. If this includes a blow dry using a round brush this can be counted as one of the two style and finish looks listed below
Style and finish hair using a range of techniques to create a variety of looks	Two finished looks using a minimum of four techniques: <ul style="list-style-type: none"> • A blow dry • A hair-up style 	<ul style="list-style-type: none"> • One above and one below shoulder look • One setting technique • 80% of the hair should be taken up • Three dressing techniques • The blow dry must include the use of a round brush
Colour and lighten hair using a range of techniques	Two colour and/or lightened hair services using a minimum of two products: <ul style="list-style-type: none"> • One woven highlights • One other colouring technique 	<ul style="list-style-type: none"> • A minimum of a “T” section of the head • A change in depth and tone, and one other colouring technique

The assessment will require the learner to work on a minimum of **two** models. The learner is responsible for providing suitable models for the end-point assessment, and the employer or training provider should support where necessary. The models can be familiar to the learner. The end-point assessment will take a maximum of **six hours** excluding breaks.

Example of appointment schedule

Time		Products used and Range covered
10.00am	Mrs Smith - Consultation and shampoo and condition the hair	<p>Mrs Smith – Consultation – Identifying clients desired look Identify inflecting factors. Shampoo and condition the hair and scalp- Wella shampoo. Shampoo technique – Effluerage, Rotary friction. Conditioner – Wellaplex express. Conditioning technique, Effleurage and petrissage. Cut hair – Re-style – Club cutting, Freehand, Texturizing and graduation. Style and Finish – Blow dry with round brush, Heat protector and serum, Take into account all factors, Use hand dryer. Styled above shoulder. Give aftercare advice and recommendations.</p>
10.20	Restyle / hair cut	
11.00	Blow dry	
12.00	After Care advise	
12.15	Tidy work area	
12.30	Break	
1pm	Mrs Brown -Client Consultation	
1.15	T Section foils	
2.00	Development	
2.30	shampoo and condition the hair and scalp	<p>Mrs Brown - Consultation – Identifying desired look and All test required prior to services (record card and incompatibility and skin test as evidence) and test during consultation porosity and elasticity. 2 colour woven highlights to naturalise the hair 12/0 & 9/04 , Colour Touch 7/7 to refresh middle lengths and ends Shampoo and condition –Wella shampoo and conditioner. Shampoo technique, effleurage, rotary and friction. Conditioning technique, effleurage and petrissage. Blow dry – Blow dry curly blow into pin curls. Hair up- Plating/braiding/knots and</p>
2.45	Curly Blow dry and pin curls	
3.30	Hair up	
4.15	After care advise	
4.20	Tidy up	

Barbering

Level 2 Diploma for Hair Professionals – Barbering

City & Guilds unit number	Unit title	GLH
Mandatory		
201	Consultation	63
202	Shampoo, condition and treat the hair and scalp	40
209	Cutting hair using barbering techniques to create a variety of looks	180
210	Style and finish men's hair	45
211	Cut facial hair into shape	82
212	Provide shaving services	110

Barbering end-point assessment



Detailed explanation of the end-point assessment




The end-point assessment stage will provide a 'snap shot' holistic assessment of the learner's practical skills, similar to an industry trade test. The learner will demonstrate he/she can complete a range of services on a number of models to industry standards and within commercial timings. The learner's consultation skills, communication skills, safe working practices, professionalism, values and behaviours will be integrated into the end-point assessment.

Route 2: Barbering end-point assessment

The learner will be assessed carrying out consultation for **all** services completed during the assessment. The learner must shampoo and condition hair as part of at least **one** service of the end assessment, this maybe more as appropriate.

The end-point assessment test the skills knowledge and behaviours set out in the standard

- 1. Practical assessment**
- 2. Oral questioning**

16    Assessment Examiner while the learner carries out the following services

Barbering end-point assessment

Reference to the Standard	Service	Specific requirements
Cutting hair using barbering techniques to create a variety of looks	Two barbering looks using a minimum of nine techniques	<ul style="list-style-type: none">• Two of the neckline shapes• Two of the outline shapes
Style and finish men's hair	One finished looks on men's hair	<ul style="list-style-type: none">• one drying techniques
Cut facial hair into shape	Two facial hair cuts	<ul style="list-style-type: none">• A full beard and moustache• A partial beard and moustache
Shaving services	One full shaving service	

The assessment will require the learner to work on a minimum of **two** models. The learner is responsible for providing suitable models for the end-point assessment, and the employer or training provider should support where necessary. The models can be familiar to the learner.

The end-point assessment will take a maximum of **three hours** excluding breaks.

End-point Assessment feedback form

Level 2 Diploma for Hair Professionals - Barbering (End-Point Assessment - with centre venue)

Apprentice name		Enrolment number	
IEPA name		Date	24/09/2021

Theme		Fail		Pass		Distinction	
		<input type="checkbox"/>	0	<input checked="" type="checkbox"/>	25	<input type="checkbox"/>	35
Ways of working		<input type="checkbox"/>	0	<input checked="" type="checkbox"/>	25	<input type="checkbox"/>	35
	Shampoo, condition and treat hair and scalp	<input type="checkbox"/>	0	<input type="checkbox"/>	0		
	Cutting hair using barbering techniques	<input type="checkbox"/>	0	<input type="checkbox"/>	125	<input checked="" type="checkbox"/>	175
Technical skills	Style and finish men's hair	<input type="checkbox"/>	0	<input checked="" type="checkbox"/>	65	<input type="checkbox"/>	91
	Cut facial hair into shape	<input type="checkbox"/>	0	<input type="checkbox"/>	75	<input checked="" type="checkbox"/>	105
	Shaving services	<input type="checkbox"/>	0	<input checked="" type="checkbox"/>	85	<input type="checkbox"/>	119
Understanding		<input type="checkbox"/>	0	<input checked="" type="checkbox"/>	100	<input type="checkbox"/>	140
Customer service		<input type="checkbox"/>	0	<input checked="" type="checkbox"/>	25	<input type="checkbox"/>	35
		Total score		580			
		Overall grade		Pass			

Apprenticeship Grade	Points
Distinction	634-700
Pass	500-633
Fail	0-499

Determining the apprenticeship grade

Each theme will be graded individually and each result converted into points. The points available for each assessment grade are listed in the table below.

Theme	Pass	Distinction
Ways of working	25	35
Cutting hair using barbering techniques	125	175
Style and finish men's hair	65	91
Cut facial hair into shape	75	105
Shaving services	85	119
Understanding	100	140
Customer service	25	35

The points for each theme are added together, and the overall grade determined using the following apprenticeship grade boundaries.

Apprenticeship Grade	Points
Distinction	634-700
Pass	500-633
Fail	0-499

End Point Assessment - Barbering

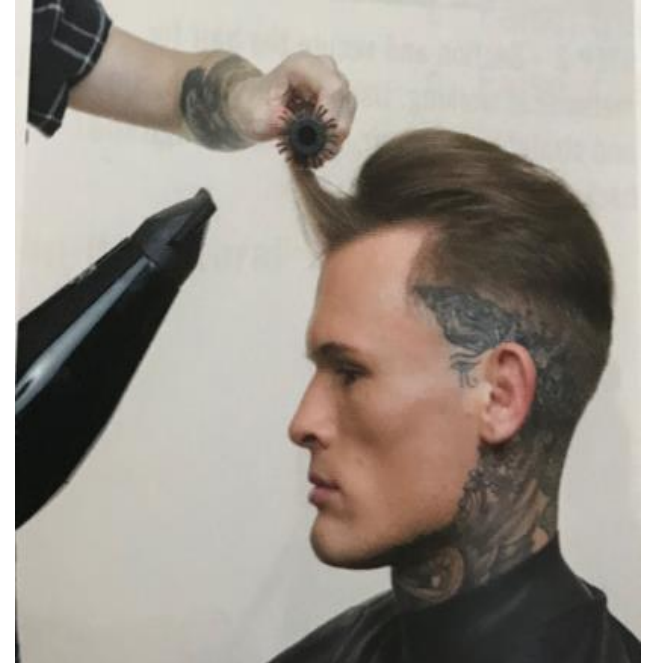
Consult, shampoo and condition hair will also be included in the assessment

Cutting hair using barbering techniques to create a variety of looks

Style and finish men's hair

Cut facial hair into shape

Shaving services



Preparation for the End-point Assessment

END POINT ASSESSMENT

What needs to be considered to prepare the Apprentice for success?

Preparation is vital!

**Tip 1:
Read the
Assessment plan
and Appendix**

**Tip 2:
Choosing and
working with
models.**

**Tip 3:
Commercial
Timings
Evaluation**

**Tip 4:
Preparing for the
practical trade
test (EPA)**

**Get ready
to shine
like a
STAR**

“By failing to prepare, you are preparing to fail.” Benjamin Franklin

TIP 1: Do your homework.

Take a time to look at the skills required to be demonstrated as part of your “End Point Assessment” (EPA), practice, practice & practice some more.

“By failing to prepare, you are preparing to fail.” — [Benjamin Franklin](#)

TIP 2: Get ready to shine like a STAR!

When preparing, write a list of questions that you think you could be asked by the Independent Assessor. Once you feel ready it may help to ask your employer or tutor to test you and provide some feedback. By practicing a few common examples, your responses will flow more naturally and you will feel more confident too.

TIP 3: Reading your brief

Make sure you read your assessment brief and highlight the key areas you are going to be assessed on

Once you have read through all of the tasks, check your understanding of what you need to achieve with your tutor

TIP 4: Preparing for the practical test

There are some important details you need to know prior to arriving for your practical test so that you can make sure you are prepared to give a star performance:

- What will the practical test consist of?
- How long will the practical test take?
- What you need to take with you.
 - Reliable models, that will not let you down on the day, which meet the requirements of the EPA
 - Products
 - Tools and equipment

Are you ready?

Remember the **5 P's**

Planning and **P**reparation **P**revents **P**oor **P**erformance

Practice makes perfect, so practice, practice and more **good** practice

Mock tests

Having several mock tests is important in order to familiarize with the test format and to get used to cope with possible mistakes. They are also useful to understand how the test is marked and what you need to do to get Pass or Distinction

TIP 5: Evaluation

Once you've have practiced your assessment you need write down what went well, what could you have done better, and what would you have done differently next time?

TIP 6: Timings

If your observation was timed, did you complete your assessment within the time allocated. If not, ask yourself the following questions:

- Did you carry out the task in the most logical order?
- Were you fully prepared before starting the task?
- Did you have all of your equipment and products ready?

TIP 7: Working on models

If your task requires working with model – are they going to give you the best opportunity to showcase your skills? Don't try something new on the day that you haven't already perfected.

If you are working with models, do they need to be briefed and are they aware of the expectations and importance of this end point assessment.

Areas for Development

Environment

- All EPA must be carried out in commercial timings and conditions
- Commercial space meets Health and Safety Legislation
- Any conflicts of interest must be declared
- The environment can be a shared area –****however the apprentice must ensure that NO colluding occurs**

Oral Questions - Areas for development

- Some apprentices were unsure when asked about any “influencing factors”
- Some apprentices were unsure of tests that they carried out.
- Massage movements used during the shampoo and conditioning services.

Areas for development – Hairdressing

Style and finish hair using a range of techniques to create a variety of looks

- ✓ one blow dry which must create volume, movement and curl - a round brush needs to be used to create curl and movement, this cannot be achieved with tongs/wands.
- ✓ for the re-style and finish service, some apprentices didn't change of length and shape of the client's hair.
- ✓ the apprentices must style hair that is above the shoulder and below the shoulder.
- ✓ **Please sense check the models.**
- ✓ when working with long hair, some apprentices failed to prepare the hair correctly, which then caused the finished look not to have a good level of finesse and polish

Areas for development – Hairdressing

Just to clarify:

- Bleach does not have to be used, as long as the colour used changes depth & tone and another technique is being used.
- such as quasi in-between foils to refresh colour or balayage and 2 different colouring products are used. (always refer to the manufacturers instructions).
- The T section – is a woven technique that highlights the hair from top and the side of the head, the hair is woven to the roots.

Areas for development – Barbering

- Some apprentices did not use a minimum of 3 styling and finishing products when styling and finishing the men's hair. Refer to the assessment plan – appendix B
- When cutting facial hair some apprentices only cut the outside edge of the beard and did not blend the internal layers.
- Some apprentices did not use all the required cutting techniques when cutting facial hair.
- When completing a beard trim the apprentice must fully demonstrate their capabilities and the beard cut must be complete in every aspect and include trimming of the moustache and defining the outline shape and general reduction of the beard bulk.
- Apprentices must remember to wear gloves when using an open cutthroat razor, even if used against the skin to tidy up the neckline during the haircut

Advice/Recommendations for Employers/Providers

- Choice of models – this is **KEY** for the apprentice to perform well on the day.
- As the apprentice can choose their models - the employer and provider need to make sure that the chosen models are going to give the apprentice the best opportunity to showcase their skills on the day of their EPA.
- The employer/provider needs to check that the models are suitable and meet the requirement of the assessment brief and appendix A or B.

EPA – TRADE TEST – FINAL SUMMATIVE ASSESSMENT – shop floor ready.

- **Please familiarise yourself with the latest FAQs and LIEPA report.**

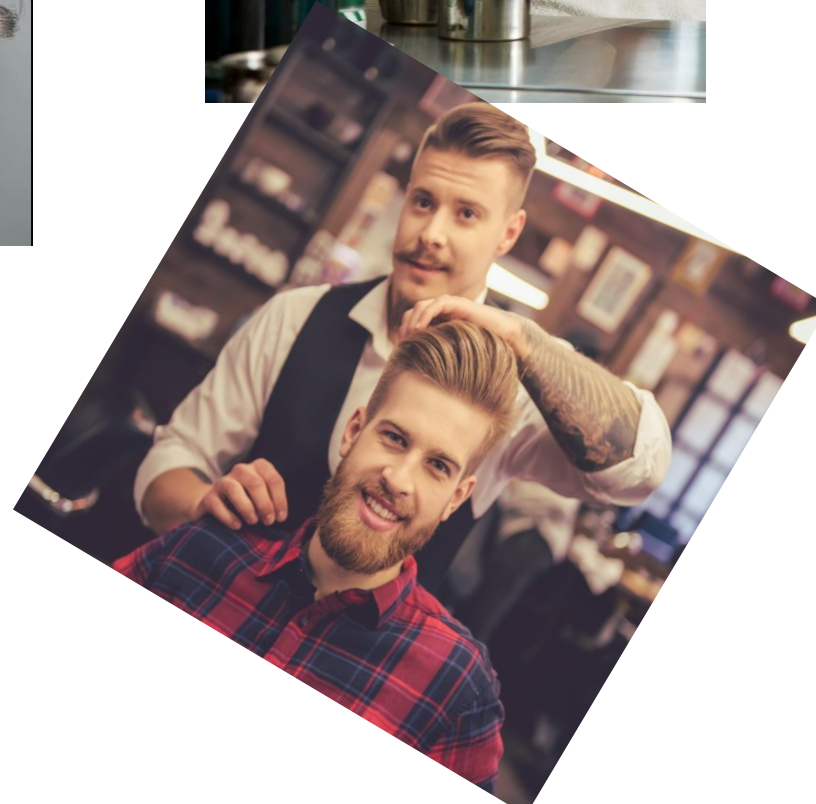
Advice/Recommendations for Employers/Providers

- Choice of models – this is **KEY** for the apprentice to perform well on the day.
- As the apprentice can choose their models - the employer and provider need to make sure that the chosen models are going to give the apprentice the best opportunity to showcase their skills on the day of their EPA.
- The employer/provider needs to check that the models are suitable and meet the requirement of the assessment brief and appendix A or B.

EPA – TRADE TEST – FINAL SUMMATIVE ASSESSMENT – shop floor ready.

- **Please familiarise yourself with the latest FAQs and LIEPA report.**

Models



Further Support

We are here to support you - keep in touch

Contact us for general support

If you have any questions please contact our Customer Support Team:

E: centresupport@cityandguilds.com

T: 0192 4930 800

Contact us for EPA support

If you have any questions please contact our Customer Support Team:

E: centresupport@cityandguilds.com

T: [0844 543 0000](tel:08445430000) (option 5)

Webchat: cityandguilds.com/help/contact-us

Contact us for Technical qualifications support

If you have any questions please contact our Technical Support Team:

E: Technical.Quality@cityandguilds.com

T: 0300 303 53 52

Webchat: [Technicals](#) pages on our website..



Emma Mackay

Industry Manager for Hair, Beauty, Retail & Creative

Email: emma.mackay@cityandguilds.com

M: +44 (0) 7525590183



Sarah Harrison

Technical Advisor for Hair & Beauty

Email: sarah.harrison@cityandguilds.com

M: +44 (0) 7717851613



Sign up

Tools and Support

[Walled Garden](#)

[SmartScreen](#)

[Learning Assistant](#)

[Bookshop](#)

[e-volve](#)

[Events](#)

[Email Updates](#)

Thank you
Questions?