

# Guide to marking the T Level Occupational Specialism Assessment

Bricklaying (8711-35)

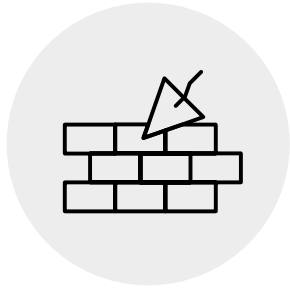
## **T-LEVELS**

'T Level' is a registered trademark of the Institute for Apprenticeships and Technical Education. 'Institute for Apprenticeships & Technical Education' and logo are registered trademarks of the Institute for Apprenticeships and Technical Education.

**Thank you for accessing these support materials.**

**Please note that the Practical Observation form has been updated since the publication of these materials. The Practical Observation form included in the live assessment materials is the version that must be used when assessing the Occupational Specialism.**

# Aims and objectives



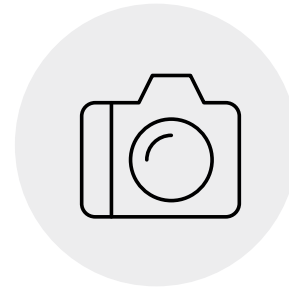
**To gain a general overview of the requirements of the Brickwork T-Level Occupational specialism assessment requirements**



**To become familiar with the assessment documentation**



**To be able to apply the marking process using the marking grid**



**To become familiar with typical evidence types**

# Agenda

**1**

Overview of typical assessment for Occupational Specialism

**2**

Overview of Assessment Themes

**3**

Using the Assessor Pack

**4**

Using the Marking Grid

**5**

How to complete a Practical Observation form

**6**

How to complete the Candidate Record Form

**7**

Making a marking decision

**8**

Declaration of Authenticity

# Introduction

- The occupational specialism practical assessments for the T Levels are externally-set summative assessments which are internally marked by centre assessors.
- During this session we will give an overview of how the marking should be approached using the marking grid.
- If there is more than one assessor carrying out marking at the centre, this process should be carried out as part of a group activity to ensure assessors are clear and in agreement about what sorts of evidence are relevant for assessment and which assessment theme they fit into.

We have created a guide to marking process video which is available to watch online [here](#).



# Assessment

The assessment for this component consists of a practical assignment that includes a project brief and then a number of tasks for the candidate to complete.

The tasks set produce assessment themes that cover a range of knowledge and skills from the performance outcomes in the qualification specification.

Each candidate will receive a total mark for each assessment theme. The total for each assessment theme is accumulated, giving a total.



# Assessment overview

- Health and Safety
- Designs and planning (Documents)
- Presentation
- Construct complex masonry structures
  - Construct
  - Setting out / marking out
  - Plumb / level / gauge
  - Bonds
  - Joint finishes
  - Cleanliness and disposal of waste
- Repair masonry structures
  - Re-inspection
  - Repair work



# Assessment pack key information

Assessors must read the Assessor Pack to ensure familiarity and compliance with:

- Time allocation
- Resources
- Conditions of assessment
- What must be produced for marking
- Any additional evidence of candidate performance
- Marking Grid





# Assessment information

The Practical Assignment is made up of three tasks



## Task 1

Prepare and plan for the construction and repair of masonry structures



## Task 2

Construct complex masonry structures



## Task 3

Renovate and repair masonry structures

Ensure that the candidate and assessor know what evidence must be provided for assessment

# Evidence to be collected

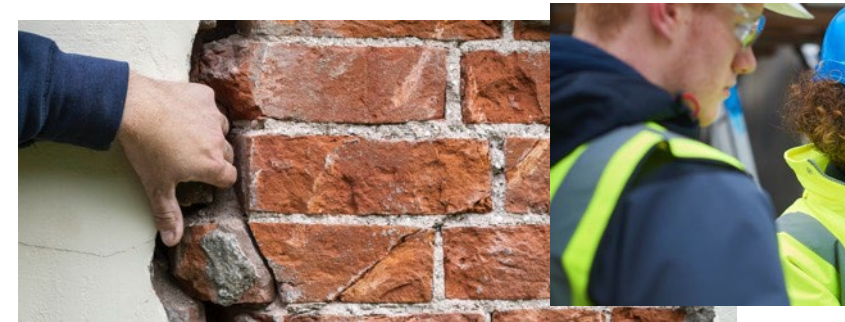


## Task 1

Measurements, risk assessments, method statements, bill of quants, a scaled drawing, a presentation

## Task 2

A completed decorative panel



## Task 3

A Chimney pot fitted and flauched, damaged brick removed and replaced, repaired brickwork

# Assessment information

## Tasks contain:

- Resources needed
- Tasks to be completed by the candidate
- Conditions of assessment
- What must be produced for marking
- Additional Evidence of candidate performance that must be captured

### Task 3 – Renovate and repair masonry structures

#### Resources

- Materials - 12 facing bricks, training mortar, mortar colour
- Tools - Bricklaying trowel, pointing trowel, level brick hammer, lump hammer, and bolster

Carry out repairs to an existing chimney that has been pre-constructed at ground level for the assessment. The repair includes replacing the pot, flaunching, remove and replace a damaged brick and re pointing an area of the chimney to match the original style to the agreed specification.

#### Conditions of assessment:

- The time allocated for this task is 4 hours
- The candidate must carry out the task on their own, under controlled conditions

#### What must be produced for marking:

- The chimney pot fitted and flaunching
- Damaged brick is removed and replaced
- One elevation of the chimney stack weather struck jointed with coloured mortar

#### Additional evidence of candidate performance that must be captured for marking:

- Assessor observations
  - Inspect and removal as part of preparation
  - Chimney pot fitted and flaunching
  - Repaired brickwork
- Assessor photographic/video evidence at various stages to show candidates progress against
  - Photographic evidence of inspection and removal of materials for preparation or repair
  - Photographic evidence of removal and replacement of corbelling and new clay fitted to the existing chimney
  - Photographic evidence of the top of stack flaunching in cement mortar
  - Video evidence of gauging coloured mortar, noting consistency and colour
  - Photographic evidence of the face of the stack once jointed with tolerances
  - Photographic evidence of the finished repair from top and side elevation

# Evidence to be collected



## **Candidate Produced Evidence**

Design calculations, inspection and testing documentation, fault reports



## **Practical Observation (PO) Forms**

Descriptive and differentiating



## **Photographic evidence**

As specified in the Assessor Guidance



## **Video evidence**

As specified in the Assessor Guidance

# Evidence to be collected

## Practical Observation (PO) Forms

PO Forms should be descriptive, describing how the candidate approached the tasks and clearly reflecting the performance.

Task 1 - Presentation of the design and scaled drawing of the proposed decorative panel to the client	
Practical Observation Form	
Assessment ID	Qualification number
8711-305	8711-35
Candidate name	Candidate number
Candidate A	CG12345
Centre name	Assessment theme
City & Guilds	Presentation

Complete the table below referring to the relevant marking grid, found in the assessment pack. Do not allocate marks at this stage.

Task	Notes – detailed, accurate and differentiating notes which identify areas of strength and weakness are necessary to distinguish between different qualities of performance and to facilitate accurate allocation of marks once all evidence has been submitted.
Presentation	The candidate was fluid from the start and spoke clearly whilst introducing their presentation, maintaining excellent eye contact and interaction throughout with the audience. The candidate was able to provide appropriate technical terminology throughout the presentation. The candidate gave detailed descriptive information detailing the specific types of bricks, joint finishes and colour, detailing the design and the decorative features clearly demonstrating reference to the history of the building and associated gardens. They made clear reference to the brief and provided clear rationale to justify their recommendations for their design and the materials chosen. <u>Overall</u> an engaging presentation that was well thought out and fully met the brief.

Assessor signature	Date
Assessor A	15/03/2022



# Evidence to be collected

## Photo and video evidence

Assessor photographic/video evidence at various stages to show candidates progress against:

- Video evidence of first course laid
- Video evidence of setting out/measuring/marketing out
- Photographic evidence of the plumb, line, and gauge work, tolerance shown
- Video evidence of work in completion at start, and at stages and close to completion of decorative panel identifying panel construction and hand skills
- Photographic evidence of the completed panel one from the front elevation
- Photographic evidence of the completed panel from the side elevation
- Photographic evidence of work area/housekeeping/waste disposal management at start, middle and completion of task.



# Candidate Record Form (CRF)

The evidence is marked holistically against each assessment theme.

Justification as to why the evidence falls with the band

Justification as to why the mark has been given

Health and safety						
	Band 1		Band 2		Band 3	
	1	2	3	4	5	6
<b>Band</b>	<b>Band justification</b> The risk assessment is complete and detailed, it covers many of the associated risks / hazards and risk mitigation factors are detailed with consideration given to potential harm and probability factors. Health and safety have clearly been a consideration throughout the assessment and the candidate has worked safely.  <i>The candidate evidence for candidate a does meet the requirements of the third marking band, the evidence is reasonably comprehensive and has detail relating to mitigating factors considered through the implementation of the control measures and there are few omissions in the risk assessment process.</i>					
<b>Mark</b>	<b>Mark justification</b> The risk assessment covers a good range of hazards and health and safety procedures have been followed during the preparation period and whilst working on the practical tasks, although there is no evidence of wearing protective glasses whilst cutting bricks. The risk assessment does not identify all of the associated risks and also does not consider the risk factors to allow the demonstration of understanding in implementing control measures and therefore reducing the risk rating.  <i>Due to the reasons outlined here –the response has been determined to be at the lower end of the middle marking band and a mark of 3 has been awarded.</i>					

# Tool list on a threshold competence

## Commentary

The candidate shows good knowledge and understanding identifying the basic resources, components and PPE and quantities to carry out the tasks. However some items of equipment are not included or lacking detail, including the absence of mortar materials and protective coverings, such as dust sheets, also the size of the level is not detailed. The candidate has identified quantities accurately and relevant to the tasks. The candidate demonstrates a good understanding of health and safety and has listed the PPE required to carry out the tasks safely.

Equipment / Materials	PPE
Spirit level (1)	Protective clothing
Tape measure (1)	Steel toe capped boots
Brick trowel (1)	Safety Goggles
Steel square (1)	Gloves
Line and pins (1)	Dust mask
Lump hammer (1)	
Bolster (1)	
Gauge rod (1)	
Brick Hammer (1)	
Bucket (1)	
Shovel (1)	
Facing bricks (220)	
Contrasting bricks (30)	



# Example of tool list on a Distinction

## Commentary

The candidate shows excellent knowledge and understanding identifying all of the resources, components and PPE and quantities required to carry out the tasks including finer details as in the size of the level required. The candidate has identified the quantities required accurately and relevant to the tasks. The candidate has given consideration to protection of materials to the elements with the addition of weather protective coverings. The candidate demonstrates an excellent understanding of health and safety and has listed the PPE required to carry out the tasks safely.

Equipment / Materials		PPE
Pencil (1)	Bucket (1)	Protective clothing
1200mm Spirit level (1)	Shovel (1)	Steel toe capped boots
Tape measure (1)	Facing Bricks (220)	Safety Goggles
Brick trowel (1)	Contrasting bricks (30)	Gloves/ Barrier cream
Pointing trowel (1)	Sand (1)	Dust mask
Steel square (1)	Cement (1)	
Line and pins (1)	Lime (1)	
Lump Hammer (1)	Weather Protective coverings (2)	
Bolster (1)		
Comb/ Scutch Hammer (1)		
Masonry saw (1)		
Gauge rod (1)		
Brick Hammer (1)		

# Construct complex masonry structures – Construct (Distinction)

## Commentary

Plumb, level, line and gauge were regularly checked, all within tolerance and with an overall consistency in joint thickness. The candidate worked cleanly and safely throughout the task and the completed appearance and the finish was of an excellent quality without error or defect fully meeting the specification.



# Construct complex masonry structures – Construct (Distinction)

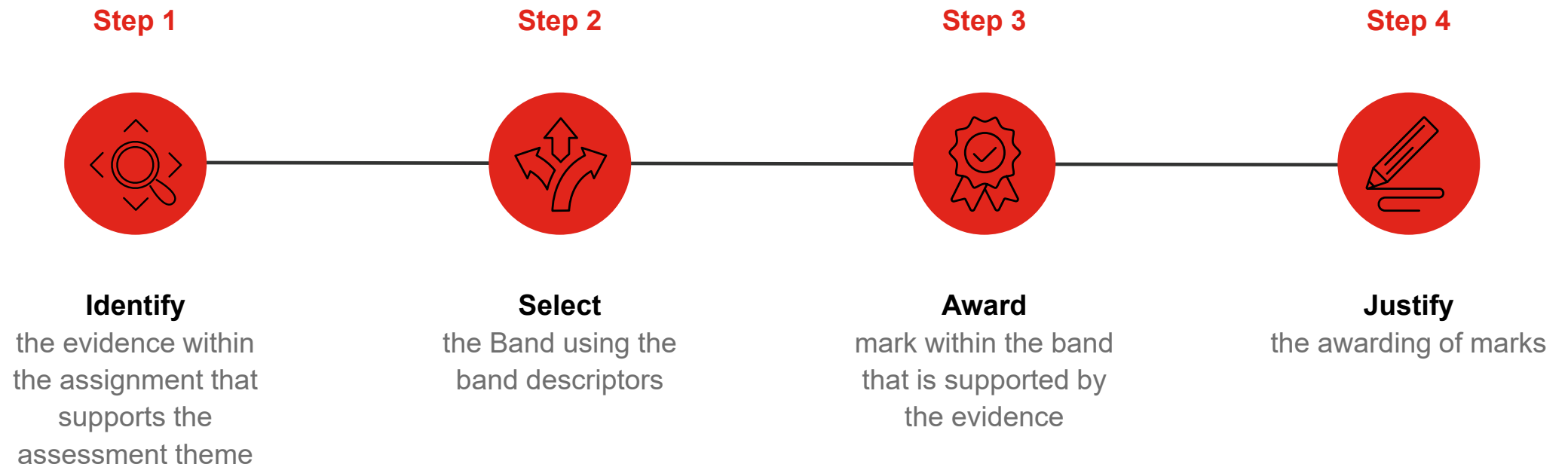


## Commentary

Plumb, level and gauge were all within tolerance with only minor inconsistencies in joint thickness.

# How to mark the evidence

# Marking of each Assessment Theme



# Marking Grid

Assessment theme

<b>Marking grid</b>					
There is a marking grid for each assessment theme that must be assessed as part of this occupational specialism assessment.					
<b>Assessment Theme: Health and Safety</b>					
<b>Note: where there is insufficient evidence to award a mark, a zero mark may be given</b>	<b>Band 1 descriptor</b>	<b>Band 2 descriptor</b>	<b>Band 3 descriptor</b>	<b>Total marks per sub assessment theme</b>	<b>Total marks per assessment theme</b>
<b>Indicative content</b>	<p><b>Typical knowledge, understanding and skills:</b></p> <p>To produce a risk assessment and risk management plan for all the tasks.</p> <p>Identify the main risks and hazards for each task and detail the mitigations that will be used to reduce the risks and hazards and identify low risk hazards that may occur during the task(s) and mitigate for these as they arise.</p> <p>Follow the risk plan through the tasks.</p> <p>Maintain a tidy work area throughout the tasks.</p> <p>Correct PPE is identified and worn at all times and as designated in their risk assessment plans (If unsafe working occurs the assessment is to be stopped immediately).</p> <p>Whilst working through tasks, adhere to a risk assessment plan, adjust it correctly if required, following safe working practices throughout and keep work areas clean and tidy, all in accordance with current regulations and legislation.</p>				

Indicative content

# Marking Grid

Marks per band		
1-3	4-6	7-9
<p>Risk assessment is complete and covers the key risk/hazard factors. Risk mitigation methods are limited. Likelihood against probability has been attempted but lacks reasoning.</p> <p>Health and safety is followed during preparation and throughout tasks so that all work is completed safely but when working some low-risk hazards were missed.</p>	<p>Risk assessment is complete and covers a good range of risk/hazard factors. Risk mitigation methods have been identified for some of the potential risks/hazards, but not all. Consideration is given to potential for harm and probability factors.</p> <p>Health and safety is followed during preparation and throughout tasks and all work completed safely.</p>	<p>Risk assessment is complete, detailed and clearly identifies all the associated risk/hazard factors. Risk mitigation methods are detailed and have been clearly identified for all potential risks/hazards. Potential for harm and probability factors have been identified throughout.</p> <p>Health and safety is followed during preparation and throughout tasks and all work completed safely. Risks and hazards that occur during the tasks are correctly mitigated against as they arise.</p>

# Guidance for markers / assessors

Guidance for markers

Evidence from Task 1, 2 and 3 should be used to assess performance against this assessment theme.



**Task 1**  
Risk Assessment



**Task 2**  
Assessor observation

Following safe procedures for construction of complex masonry structures





# Assessment theme – Health and safety

Band 1 descriptor	Band 2 descriptor	Band 3 descriptor
1-4	5-8	9-12
<p>Risk mitigation methods limited. Likelihood against probability attempted but lacks reasoning.</p> <p>Health and safety is followed during preparation and throughout tasks so that all work is completed safely. When working some potential hazards were missed and on occasion minimal guidance is required to mitigate against minor risks.</p>	<p>Risk mitigation methods identified for some of the potential risks, but not all. Consideration given to potential for harm and probability factors.</p> <p>Health and safety is followed during preparation and throughout tasks and all work completed safely.</p>	<p>Risk mitigation methods are detailed and have been clearly identified for all potential risks.</p> <p>Potential for harm and probability factors have been identified throughout.</p> <p>Health and safety is followed during preparation and throughout tasks and all work completed safely. Risks and hazards that occur during the tasks are correctly mitigated against as they arise.</p>

# Assessment theme – Health and safety

Band 1 descriptor	Band 2 descriptor	Band 3 descriptor
1-4	5-8	9-12
<p>Risk mitigation methods <b>limited</b>. Likelihood against probability <b>attempted but lacks reasoning</b>.</p> <p><b>Health and safety is followed</b> during preparation and throughout tasks so that <b>all work is completed safely</b>. When working <b>some potential hazards were missed</b> and on occasion <b>minimal guidance is required to mitigate against minor risks</b>.</p>	<p>Risk mitigation methods identified for some of the potential risks, but not all. Consideration given to potential for harm and probability factors.</p> <p>Health and safety is followed during preparation and throughout tasks and all work completed safely.</p>	<p>Risk mitigation methods are detailed and have been clearly identified for all potential risks.</p> <p>Potential for harm and probability factors have been identified throughout.</p> <p>Health and safety is followed during preparation and throughout tasks and all work completed safely. Risks and hazards that occur during the tasks are correctly mitigated against as they arise.</p>

# Assessment theme – Health and safety

Band 1 descriptor	Band 2 descriptor	Band 3 descriptor
1-4	5-8	9-12
<p>Risk mitigation methods limited. Likelihood against probability attempted but lacks reasoning.</p> <p>Health and safety is followed during preparation and throughout tasks so that all work is completed safely. When working some potential hazards were missed and on occasion minimal guidance is required to mitigate against minor risks.</p>	<p>Risk mitigation methods identified for some of the potential risks, but not all. Consideration given to potential for harm and probability factors.</p> <p>Health and safety is followed during preparation and throughout tasks and all work completed safely.</p>	<p>Risk mitigation methods are detailed and have been clearly identified for all potential risks.</p> <p>Potential for harm and probability factors have been identified throughout.</p> <p>Health and safety is followed during preparation and throughout tasks and all work completed safely. Risks and hazards that occur during the tasks are correctly mitigated against as they arise.</p>

# Assessment theme – Health and safety

Band 1 descriptor	Band 2 descriptor	Band 3 descriptor
1-4	5-8	9-12
<p>Risk mitigation methods limited. Likelihood against probability attempted but lacks reasoning.</p> <p>Health and safety is followed during preparation and throughout tasks so that all work is completed safely. When working some potential hazards were missed and on occasion minimal guidance is required to mitigate against minor risks.</p>	<p>Risk mitigation methods identified for some of the potential risks, but not all. Consideration given to potential for harm and probability factors.</p> <p>Health and safety is followed during preparation and throughout tasks and all work completed safely.</p>	<p>Risk mitigation methods are detailed and have been clearly identified for all potential risks.</p> <p>Potential for harm and probability factors have been identified throughout.</p> <p>Health and safety is followed during preparation and throughout tasks and all work completed safely. Risks and hazards that occur during the tasks are correctly mitigated against as they arise.</p>

# Assessment theme – Health and safety

Task	Notes
<b>Repair of masonry structures - Chimney</b>	<p data-bbox="473 282 2423 401">Detailed, accurate and differentiating notes which identify areas of strength and weakness are necessary to distinguish between different qualities of performance and to facilitate accurate allocation of marks once all evidence has been submitted.</p> <p data-bbox="473 432 682 468"><b>Preparation</b></p> <ul data-bbox="473 486 2359 579" style="list-style-type: none"><li data-bbox="473 486 2328 525">• The candidate inspected the damage before starting work <b>selecting all the necessary tools and PPE required.</b></li><li data-bbox="473 539 2359 579">• The existing material was removed with a brush and then cleaned well with great consideration to the structure.</li></ul> <p data-bbox="473 651 596 686"><b>Repair</b></p> <ul data-bbox="473 705 2423 1293" style="list-style-type: none"><li data-bbox="473 705 2328 786">• Mortar for the jointing was correctly gauged and mixed to a regular consistency and fully matched the existing structure in texture and colour.</li><li data-bbox="473 805 2359 929">• The candidate applied the joints to the face of the chimney and followed a methodical system of completing the perpendicular joints prior to the bed joints, which produced regular weatherstruck joints with consistently even edges.</li><li data-bbox="473 948 1819 986">• Damaged brick was replaced with care and consideration to existing structure.</li><li data-bbox="473 1005 2423 1086">• The candidate applied the flaunching to the top of the stack to the correct fall and ensured that there were no trowel marks producing an excellent finish.</li><li data-bbox="473 1105 2328 1186">• Repair work was completed correctly, with excellent tool use and without error or default. The finish was to an excellent standard.</li><li data-bbox="473 1205 2359 1243">• <b>All work areas kept clean, working safely throughout and waste removed and disposed of in line with legislation.</b></li><li data-bbox="473 1262 1314 1293">• Specification requirements have been fully met.</li></ul>

# Mark and Band Justification

	Band 1		Band 2		Band 3	
	1	2	3	4	5	6
<b>Band 2</b>	<p><b>Band justification</b></p> <p>The candidate has demonstrated that they have exceeded the requirements of the lowest and middle marking bands through safe demonstration of work practices, and through consideration of risks beyond a limited level.</p> <p>The candidate response meets the requirements of the third marking band as the evidence is <b>detailed</b> in relation to mitigation and control for all risk/hazards identified.</p> <p>Therefore, the mark to be awarded sits within the top marking band.</p>					
<b>Mark 3</b>	<p><b>Mark justification</b></p> <p>The risk assessment <b>covers all of the hazards that should be considered</b>, and health and safety procedures have been followed during the preparation period and whilst working on the practical tasks. The risk assessment identifies all of the associated risks and also does consider the range of risk factors to allow the demonstration of understanding in implementing control measures and therefore reducing the risk rating. Controls and mitigations are <b>detailed, comprehensive</b> and have <b>clearly identified</b> for all potential risks/ hazards.</p> <p>Due to the reasons outlined here –the response has been determined to be at the top end of the upper band.</p>					

# Declarations of Authenticity

Declarations of Authenticity are required and must be signed by the candidate and tutor

## Declaration of authenticity

<b>Assessment ID</b>	<b>Qualification number</b>
<b>Candidate name</b>	<b>Candidate number</b>
<b>Centre name</b>	<b>Centre number</b>

### Additional Support

Has the candidate received any additional support in the production of this work?

**No**  **Yes**  (Please tick appropriate)

If yes, give details below (and on a separate sheet if necessary).

--

### Candidate:

*I confirm that all work submitted is my own, and that I have acknowledged all sources I have used.*

<b>Candidate signature</b>	<b>Date</b>

### Tutor:

*I confirm that all work was conducted under conditions designed to assure the authenticity of the candidate's work, and am satisfied that, to the best of my knowledge, the work produced is solely that of the candidate.*

<b>Tutor signature</b>	<b>Date</b>

**Note:** Where the candidate and/or tutor is unable to or does not confirm authenticity through signing this declaration form, the work will be returned to the centre and this will delay the moderation process. If any question of authenticity arises, the tutor may be contacted for justification of authentication