

Technical Qualifications in Health, Care & Childcare

27 April 2017

| Presenter: Paul Robottom, Technical Adviser Health, Care and Childcare at City & Guilds

Changing reforms in 14-19 Education (England)

An overview of the changing world and the City & Guilds response

<https://www.youtube.com/watch?v=FMds8MaWSTE>

For further information please contact:

Anita Crosland

14-19 Senior Education Manager

City & Guilds

T: 0207 294 2632 | M: 07833348885 |

anita.crosland@cityandguilds.com

City & Guilds, 1 Giltspur St, London EC1A 9DD





**L2 KS5 Certificate
in Healthcare,
Care & Childcare (3625-20)***

**Subject to DfE approval*

KS5 Level 2 Design Principles (Effective from September 2016)

Key Stage 5 (16 - 18) (L2) Technical Certificates

360 GLH or 450 GLH

Made up of 30, 60, 90 GLH Units

Progression: Enable entry to an apprenticeship, employment or progression to a Level 3 Technical Level Qualification.

Grading: P/M/D/D*

UCAS Points: n/a

Mandatory content and the contribution to overall grade must make up **at least 40%** of the qualification.
Where qualifications have one or more pathway, the mandatory content (%) should apply equally to these.

Assessment: A proportion of the qualification content will be assessed externally
(**minimum 25% for TCs and 30% Tech Level**). Must also include synoptic assessment.

Employer involvement: In design, recognition, delivery and or assessment, which raises the credibility of the qualification in the eyes of employers, parents and learners.



Level 2 Certificate in Healthcare, Care & Childcare

(360 GLH) (3625-20) (QAN: 603/0296/3)
For delivery September 2017

Link to qualification handbook and exemplar assessments:

<http://www.cityandguilds.com/qualifications-and-apprenticeships/health-and-social-care/care/3625-technical-qualifications-in-health-and-care#tab=informat>

Employer Support :

- Warrington Borough Council
- Pre-School Learning Alliance
- Ashford and St Peter's Hospitals
- Springboard Nursery
- Barnsley Borough Council
- British Institute of Learning Disabilities (BILD)
- Cornwall Care



City & Guilds NEW KS5 L2 Technical Certificate in Healthcare, Care & Childcare (3625-20) (QAN: 603/0296/3)

- Is a full L2 qualification – (360 GLH - 9 Units – one year delivery + 120-150 hrs work placement requirement)
- Recognised by employers, designed/endorsed by employers and creates a clear path to work
- Equips learners with specialist knowledge and skills enabling entry onto an apprenticeship or into a job in Health, Adult Care or Childcare
- Main purpose is into employment or progression into a L3 KS 5 qualification in Health and Care OR Early Years Educator



L2 Technical in Healthcare, Care & Childcare

9 Mandatory Units:

1. Working in healthcare and care (90 GLH)
2. Working with babies, children, young people and families in care and education (60 GLH)
3. Values, beliefs and behaviours for working in healthcare, care and childcare settings (30 GLH)
4. Communicating for effective practice in healthcare, care and childcare (30 GLH)
5. Working safely in healthcare, care and childcare environments (30 GLH)
6. Safeguarding and protecting vulnerable people (30 GLH)
7. Supporting health and healthy living in healthcare, care and childcare (30 GLH)
8. Principles and theories of human growth and development (30 GLH)
9. Developing resilience for working in healthcare, care and childcare (30 GLH)

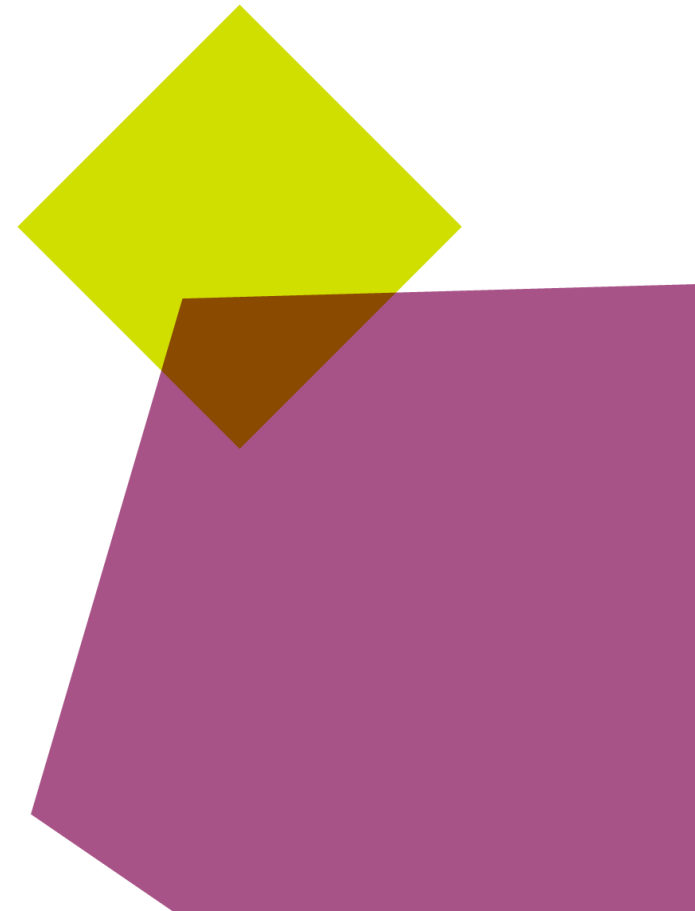
L2 Technical Certificate Work Placement Requirements

120 – 150 work placement hours work practice per year

Learner 'Work Placement Practice' can include:

- Work experience placements in Health, Care and/or Childcare set up, managed and supervised by the training provider – these work placements must feed into the qualification's summative synoptic assessment requirement.
- Volunteering work in Health, Care and/or Childcare practice (provided that the expectations of the employer is that the learner follows the same code of conduct as employees and is treated equal to other employees and as an employee).
- Paid employment in Health, Care and/or Childcare practice.

Please see the qualification handbook for further details



Work Placement Practice Workbook



WORK PLACEMENT PRACTICE

LEARNER NAME:

Work Placement - Workbook



For learners undertaking the
Level 2 Technical Certificate in Healthcare, Care and Childcare



New L2

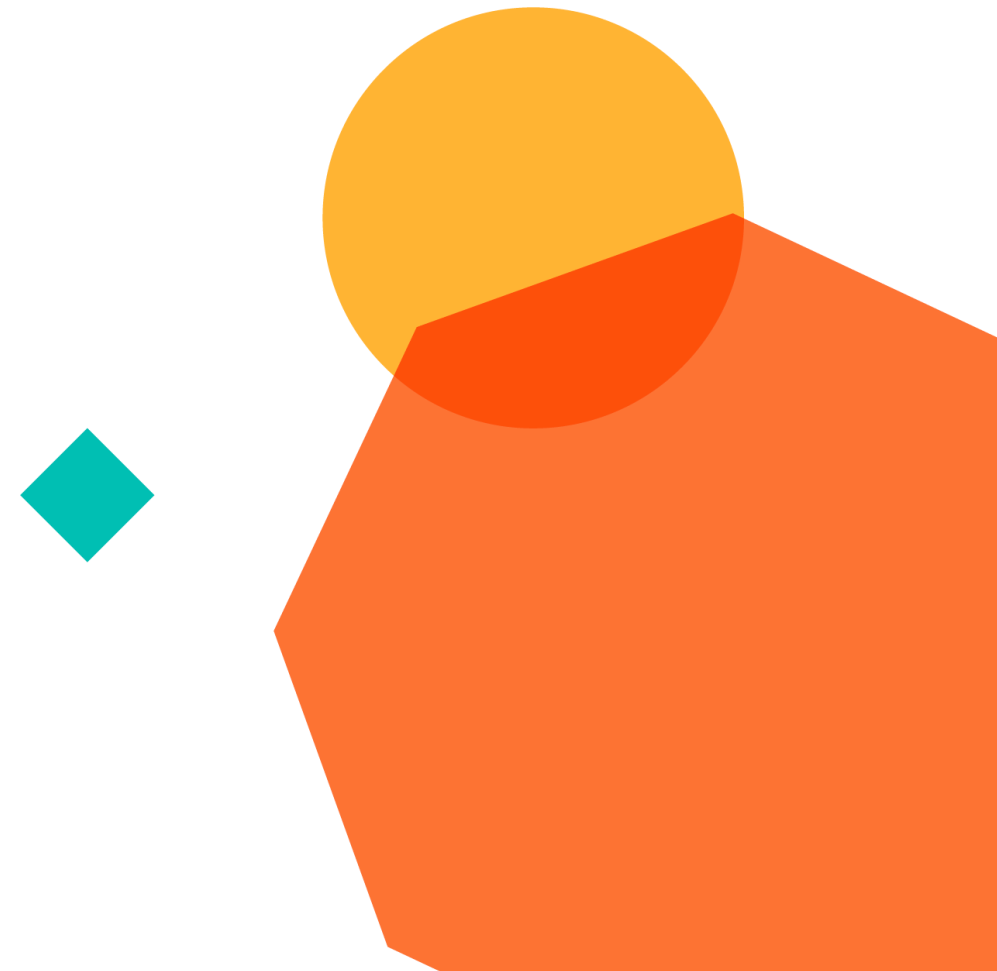
Technical Qualifications Assessment

Timeframes, support and examples

L2 Certificate - Summative Assessment

Summative Assessment Requirements

1. **Knowledge test** – externally set, externally marked – online or paper based (40% weighting)
2. **Synoptic assignment** – externally set, internally marked, externally moderated (60% weighting) to include:
 - Case study scenario – 2 tasks
 - Skills task – practical – observed by Assessor/tutor
 - Interview re work practice experience – recorded – completed by Assessor/tutor
 - Exemplar test and synoptic paper, available via the qualification webpage (3625-20)



Key assessment dates 2017

Event	Date
Opening of learner registration window	4 Sept 2017
Synoptic assignments released to centres	4 Sept 2017
Optional units released to centres	4 Sept 2017
Deadline for learner registration	3 Nov 2017
Booking window for Feb/Mar exams series	Immediately following learner registration
Booking window for synoptic assignments, optional units (if applicable) and employer involvement (KS5 only) open	Immediately following learner registration
Deadline for booking Feb/Mar exam series	30 Nov 2017

Key assessment dates 2018

Event	Date
Deadline for booking synoptic assignments, optional units (if applicable) and employer involvement (KS5 only)	12 Jan 2018
Synoptic assignments released to learners	5 Feb 2018
First exam series	Feb/Mar 2018
Results of first exam series	Six weeks following exam
Booking window for May/June exam series opens	One month before second exam
Booking window for May/June exam series closes	One week later
Deadline for submitting evidence and marks onto Moderation Portal for synoptic assignments	18 May 2018
Second exam series (for resits)	May/June 2018
Deadline for submitting evidence and grades onto Moderation Portal on optional units (if applicable) and employer involvement (KS5 only)	18 June 2018
Final results available	18 Aug 2018

L2 Certificate Centre Activity

- Review the 3625-20 qualification handbook and mandatory units
- Review the test paper exemplar
- Review the synoptic requirement exemplar
- Feedback



A healthcare worker in blue scrubs with a stethoscope around their neck is holding the hand of an elderly patient in a white hospital gown. The patient is sitting on a bed. The background is a bright, blurred hospital room. There are decorative geometric shapes in the bottom right corner: a purple octagon, a blue circle, and a dark blue pentagon.

KS5 L3 Technical Diplomas

In Health & Care

KS5 Level 3 Design Principles in line with DfE Qualification Changes in England

Key Stage 5 (16 - 18) (L3) Tech Levels

360 GLH, 450 GLH, 540 GLH, 720 GLH, 1080 GLH

Made up of 30, 60 or 90 GLH Units

Progression: Enable entry to an apprenticeship or other employment, or progression to a related higher education course or further professional training.

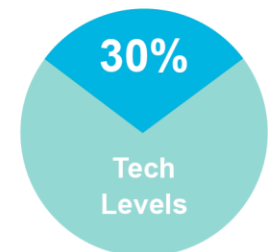
Grading: P/M/D/D*

UCAS Points: 40 min – 420 max

Mandatory content and the contribution to overall grade must make up **at least 40%** of the qualification. Where qualifications have one or more pathway, the mandatory content (%) should apply equally to these.

Assessment: A proportion of the qualification content will be assessed externally (**minimum 25% for TCs and 30% Tech Level**). Must also include synoptic assessment.

Employer involvement: In design, recognition, delivery and or assessment, which raises the credibility of the qualification in the eyes of employers, parents and learners



L3 Technical vs Applied Generals – the difference being?

Technical Level Qualifications

- Level 3 Qualification
- On par with A Levels
- Recognised by employers, designed with employers, creates a clear path to work
- Equip learners with specialist knowledge and skills, enabling application onto an apprenticeship or into a specific job role
- Have UCAS points attached enabling application/progression into HE/Further Professional Training as desired

Applied General Qualifications

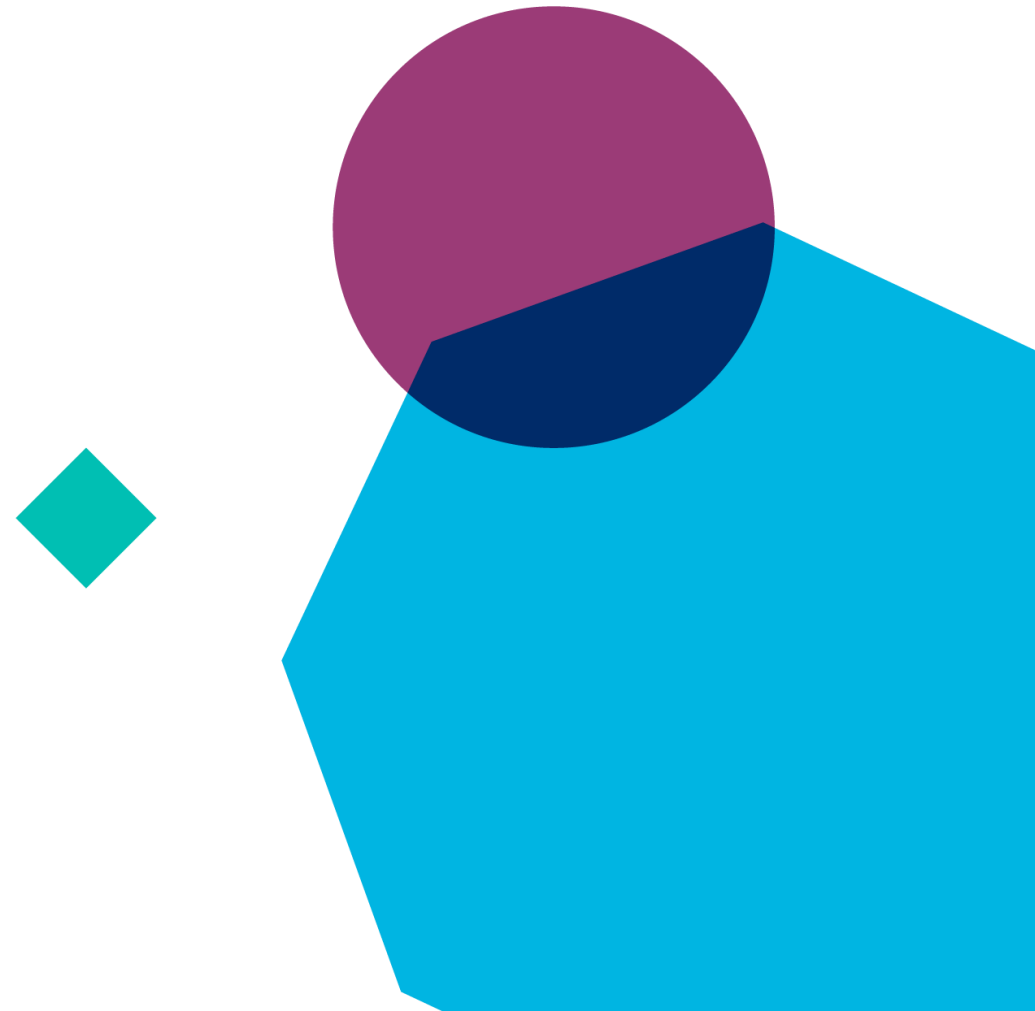
- Level 3 Qualification
- On par with A Levels
- Equip learners with transferable knowledge and skills
- For post-16 learners who want to continue their education through applied learning
- Main purpose is progression onto HE. They do not prepare learners to enter a specific job role.

KS5 What's available now?

- **Level 3 Advanced Technical Diploma in Health and Care**
(540 GLH) (3625-30) (QAN:601/7207/1)
- **Level 3 Advanced Technical Extended Diploma in Health and Care**
(1080 GLH) (3625-31) (QAN:601/7200/9)

Link to qualification handbooks and exemplar assessments:

<http://www.cityandguilds.com/qualifications-and-apprenticeships/health-and-social-care/care/3625-technical-qualifications-in-health-and-care#tab=information>



Employer Support Designed with Leading Employers

The following employers have provided letters of support for our new KS5 L3 technical qualifications in Health & Care:



They have been supported in their development from the following Higher Education institutions:

- **London South Bank University** – School of Health & Social Care
- **Northampton University** – Department of Health & Social Care
- **University of Manchester (Russell)** – School of Nursing Midwifery and Social Work
- **University of Plymouth** – School of Nursing & Midwifery
- **UWE Bristol and UWE Gloucester/University of the West of England** – Department of Nursing & Midwifery

HEI Support (England)

Further HEI recognition/agreement to consider the KS5 L3 Technical Extended Diploma include;

London South Bank University	School of Health & Social Care
Northampton University	Department of Health & Social Care
University of Manchester (Russell)	School of Nursing Midwifery and Social Work
University of Plymouth	School of Nursing & Midwifery
UWE Bristol and UWE Gloucester/University of the West of England	Department of Nursing & Midwifery
University of Chester	
University Middlesex	
University of Huddersfield	
University of Winchester	
University of Sunderland	
Northumbria University	
University of Cardiff	
Newcastle University	Accept Distinction grade in the Health and Care programme for our Health courses e.g. nursing, midwifery, OT, Physiotherapy, Social Work, Integrated Health and Social Care, Guidance and Counselling. Merit grade would be acceptable for the Operating Department Practice programme

HEI Support (England) continued...

University of Salford	Manchester Adult Nursing, Children and Young People's Nursing, Mental Health Nursing, Social Work, Social Policy
University of Teesside	Nursing (all pathways) and Operating Department Practice courses
University of Wolverhampton	
Coventry University College (tbc)	
University of Suffolk	Nursing and Midwifery
Birmingham City University	
Bournemouth University	
Nottingham University (tbc)	
Anglia Ruskin University	
University of East Anglia	BSc Adult Nursing, BSc Mental Health Nursing, BSc Learning Disabilities Nursing, BSc Children's Nursing, BSc Midwifery – Distinction, DipHE Operating Department Practice – Pass

Subject to entry grades, any University accepting a BTEC in Health & Social Care (not Health Science) – 90% of HEI's currently approached will consider our Advanced Technical Extended Diploma in Health and Care as equivalent.

Colleges already delivering 2016/17

From **September 2016** the new L3 Technical Diploma In Health & Care is being delivered by:

- West Suffolk College
- South Devon College
- Fareham College
- Oldham College
- Swindon College

New College delivery for September 2017 includes:

- Sussex Downs College – approved L2 and L3
- Richard Huish College, Taunton – awaiting approval L2 and L3
- Newcastle College Group – approved L2 and L3
- Liverpool City College – awaiting approval L2
- Oldham College - L2 approved
- South Essex College – awaiting approval for L2 and L3

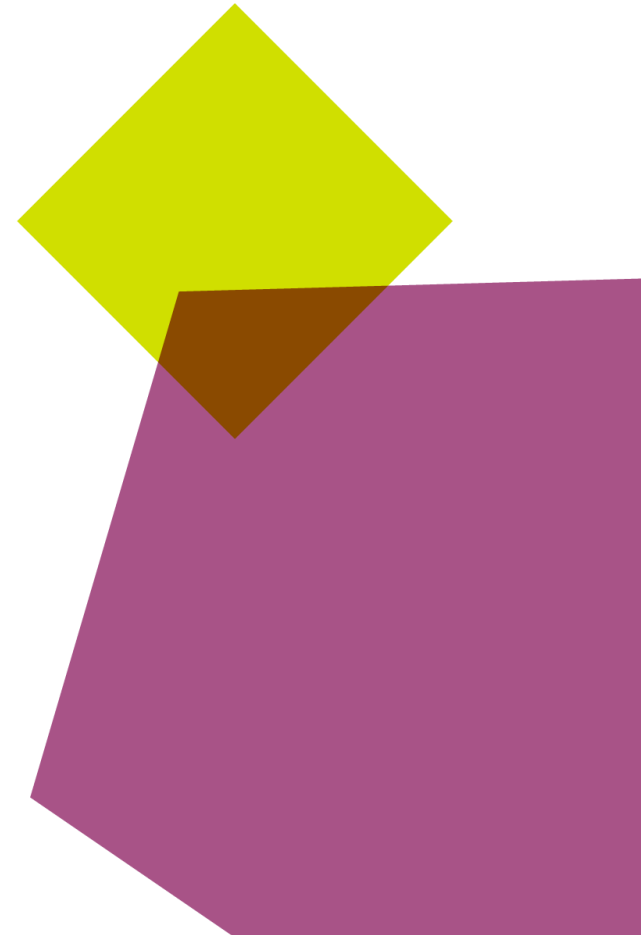
Level 3 Advanced Technical Diploma in Health and Care (540 GLH) (3625-30 OAN : 601/7207/1*)

Level 3 Advanced Technical Diploma in Health and Care (540 GLH)

9 mandatory units

- **Unit 301** Introduction to health and care
- **Unit 302** Personal and professional development in health and care
- **Unit 303** Equality and diversity in health and care
- **Unit 304** Effective communication in health and care settings
- **Unit 305** Safeguarding for all in health and care
- **Unit 306** Safe working in health and care
- **Unit 307** Understanding cognitive impairment
- **Unit 308** Understanding individual care needs
- **Unit 309** Quality service provision in health and care

Work placement practice – 200-370hrs per year – managed by the training provider



Year 2 - Level 3 Advanced Technical Extended Diploma in Health and Care (1080 GLH) (3625-31 OAN : 601/7200/9*)

Level 3 Advanced Technical Extended Diploma in Health and Care (1080 GLH)

(9 units in Year 1 as per previous slide plus 7 new mandatory plus choice of 2 pathways)

- **Unit 310** Social policy in health and care
- **Unit 311** Person centred working with children, young people, parents and carers
- **Unit 312** Provision for adults in health and care
- **Unit 313** Research in health and care
- **Unit 314** Life span developments – health and care needs
- **Unit 315** Understanding physical disabilities and exploring mental health wellbeing
- **Unit 316** Structure, organisation and function of the human body

Health Pathway

- **Unit 317** Principles and models of healthcare
- **Unit 318** Science in health and care

Care Pathway

- **Unit 319** Psychology and human behaviours
- **Unit 320** Sociology of health, care and wellbeing

Work placement practice – 200-370hrs per year – managed by the training provider

L3 Technical Certificate Work Placement Requirements

200-370 work placement hours/work practice per year

Learner 'Work Placement Practice' can include:

- Work experience placements in Health & Care set up, managed and supervised by the training provider – these work placements must feed into the qualification's summative synoptic assessment requirements.
- Volunteering work in Health & Care practice (provided that the expectations of the employer is that the learner follows the same code of conduct as employees and is treated equal to other employees and as an employee).
- Paid employment in Health & Care

“The work placement component is excellent I can see such a difference in the students confidence and knowledge back in the classroom, they can contextualise their work so much better.”

Please see the qualification handbook for further details

- **Colette Burgess**
West Suffolk College
Course Director / Lecturer

Work Placement Practice – Reflective Workbooks



WORK PLACEMENT PRACTICE

LEARNER NAME:

Reflective Workbook – Year 1



WORK PLACEMENT PRACTICE

LEARNER NAME:

Reflective Workbook – Year 2



For learners undertaking the Level 3 Advanced Technical Diploma/Advanced Technical Extended Diploma in Health and Care.

©2015 City & Guilds of London Institute. All right reserved



For learners undertaking the Level 3 Advanced Technical Extended Diploma in Health and Care.

©2015 City & Guilds of London Institute. All right reserved

“Some students have done so well in their placement they have secured paid employment.”

- **Colette Burgess**
West Suffolk College
Course Director / Lecturer

UCAS Points Enabling Progression to University

Grade	Level 3 Advanced Technical Certificate (360)	Level 3 Advanced Technical Diploma (540) *450 TBC	Level 3 Advanced Extended Technical Diploma (720)	Level 3 Advanced Technical Extended Diploma (1080)
Distinction*	140	210	280	420
Distinction	120	180	240	360
Merit	80	120	160	240
Pass	40	60	80	120

Other Qualifications

Grade	Level 3 Advanced Extended Project Qualifications	Using and Applying Mathematics (Core Maths)	A Level Equivalent Points	
			UCAS Points	A Level
A*	70	-	140	A*
A	60	60	120	A
B	50	50	100	B
C	50	50	80	C
D	30	30	60	D
E	20	20	40	E

- Adding Core Maths at Level 3 makes TechBac compliant with the Government's new technical baccalaureate measure.
- Funding uplift may apply

UCAS Tariff Conversion Table

GCE Grade 1 A level = 360 GLH	Current UCAS tariff 2016	City and Guilds equivalent 2016 720 GLH	City and Guilds equivalents 2016 1080 GLH
A*	140	D* = 280	D* = 420
A	120	D = 240	D = 360
B	100	-	-
C	80	M = 160	M = 240
D	60	-	-
E	40	P = 80	P = 120

GCE Grade 1 A level = 360 GLH	New UCAS tariff 2017	City and Guilds equivalent 2016 720 GLH	City and Guilds equivalents 2017 1080 GLH
A*	56	D* = 112	D* = 168
A	48	D = 96	D = 144
B	40	-	-
C	32	M = 64	M = 96
D	24	-	-
E	16	P = 32	P = 48



New L3 Technical Qualifications Assessment

"We have some parents who are health and care professionals themselves. They can see the true benefit of this model of learning and assessment."

- **Colette Burgess**
West Suffolk College
Course Director / Lecturer

L3 Assessment in Health & Care

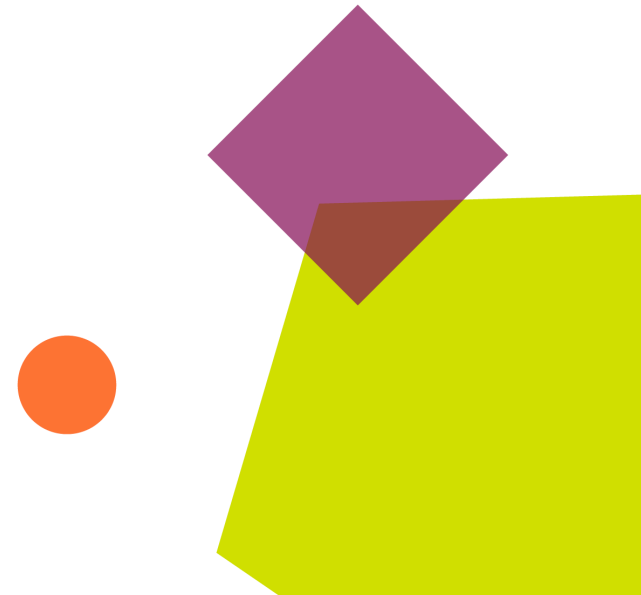
Summative Assessment requirements 2016/17

Year 1

- **Knowledge test** – externally set, externally marked – online or paper based
- **Assignment (3 case studies)** – externally set, internally marked, externally moderated – one per term
- **Professional Discussion** – externally set, internally marked, externally moderated end of Year 1 min 30 mins led by the learner

Year 2

- Externally set knowledge test – externally set, externally marked – online or paper based – end of Year 2
- Assignment (2 mini projects) – externally set, internally marked – externally moderated




Key assessment dates 2017

Event	Date
Opening of learner registration window	4 Sept 2017
Synoptic assignments released to centres	4 Sept 2017
Optional units released to centres	4 Sept 2017
Deadline for learner registration	3 Nov 2017
Booking window for Feb/Mar exams series	Immediately following learner registration
Booking window for synoptic assignments, optional units (if applicable) and employer involvement (KS5 only) open	Immediately following learner registration
Deadline for booking Feb/Mar exam series	30 Nov 2017

Key assessment dates 2018

Event	Date
Deadline for booking synoptic assignments, optional units (if applicable) and employer involvement (KS5 only)	12 Jan 2018
Synoptic assignments released to learners	5 Feb 2018
First exam series	Feb/Mar 2018
Results of first exam series	Six weeks following exam
Booking window for May/June exam series opens	One month before second exam
Booking window for May/June exam series closes	One week later
Deadline for submitting evidence and marks onto Moderation Portal for synoptic assignments	18 May 2018
Second exam series (for resits)	May/June 2018
Deadline for submitting evidence and grades onto Moderation Portal on optional units (if applicable) and employer involvement (KS5 only)	18 June 2018
Final results available	18 Aug 2018



Technical Qualifications Assessment Objectives

Assessment Objectives for Technicals – September 2017

AO1 - Recall of knowledge

AO2 - Understanding of concepts theories and processes

AO3 - Application of practical/technical skills

AO4 - Bringing it all together - coherence of the whole subject

AO5 - Attending to detail/ perfecting

Moderation Support Team for Technical Qualifications

City & Guilds

Moderation Support Team

moderationsupport@cityandguilds.com

External: 01924 206 719

Internal: 6179

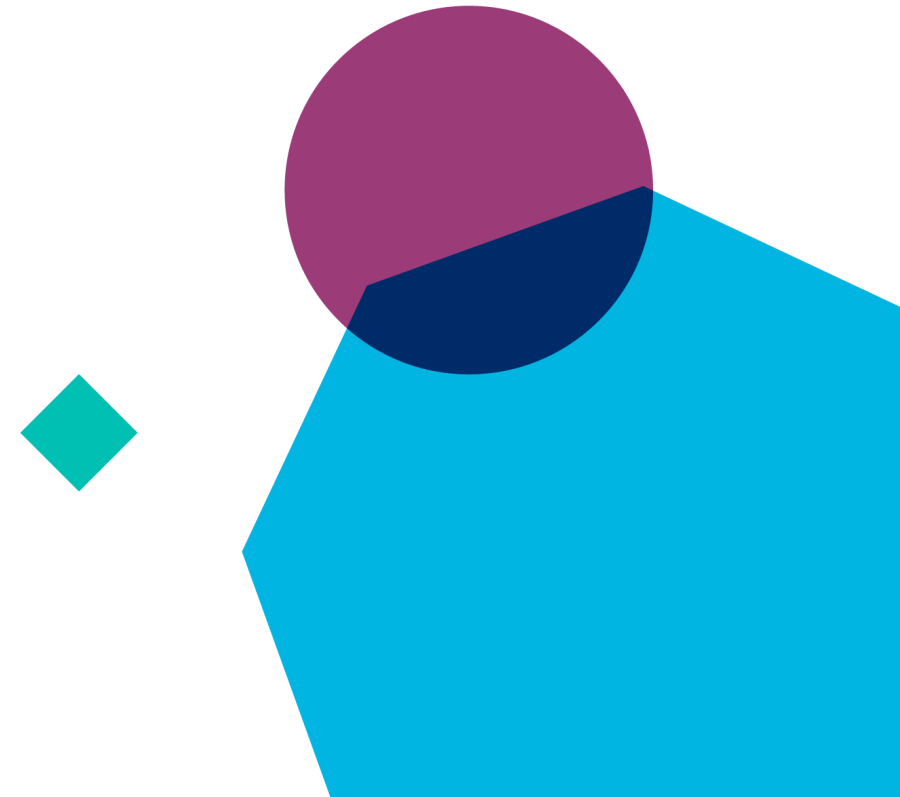
The Moderation Support Team is on hand to deal with both internal and external queries regarding the Moderation process for Technical qualifications.

What we can support with:

- Customer queries regarding Moderation Process
- Technical Qualification Approvals (QAPs)
- Technical Qualification and Moderation Timelines
- Support and guidance with the Moderation Platform

Further information can also be found on our website:

www.cityandguilds.com/techbac/technical-qualifications



Further Assessment Information

- Produce exam and synoptic timetable yearly
- 2nd external exam window to allow flexibility
- Synoptic assignments built with employers – realistic for employer needs e.g.: practical/skill tasks
- End external assessment – on-line or paper based, short answer, include m/c and stretch and challenge questions
- No requirement to produce additional unit assignments - reduction in marking burden for lecturers
- Formative assessment can be built into individualise learners needs and embedded in teaching and learning
- Practice tests available for both end external test and synoptic assignments
- Longer synoptic assignment windows
- To provide an additional stretch and challenge some learners may also want to complete the City & Guilds L3 Extended Project Qualification (2935-03)



Funding Guidance

Funding at Key Stage 4 (14-16)

- Funding for all City & Guilds Technical Qualifications appears on Section 96 for funding of 14-16 year olds
- The Project Qualification that sits within Workplace Skills also appears on Section 96 for funding of 14-16 year olds

Funding at Key Stage 5 (16-19)

- All City & Guilds Technical Qualifications appear on Section 96 for funding of 16-19 year olds
- The Project Qualification within Workplace Skills also appears on Section 96 for funding of 16-19 year olds. When delivered within Workplace Skills, the Project Qualification can be used to enhance a programme of study

Funding for 19+

- City & Guilds Technical Qualifications are also currently available for 24+ Adult Learning Loans, and from September 2016, will be available for 19+ FE loans
- City & Guilds Technical Qualifications have been identified as 'core qualifications' by the Skills Funding Agency (SFA), and can be used as part of the statutory entitlement for learners aged 19+ to gain their first full Level 2 or 3 qualification

Support Resources for L2 & L3 Technical Qualifications

What's available?

Documentation available now

- L2 and L3 Qualification handbooks
- Sample synoptic assessments
- Sample external end tests
- Work Placement Work Books for L2 & L3

www.cityandguilds.com

**For further information on the new
KS5 L3 Extended Technical Diploma in Early Years and
Childcare/ Early Years Educator – please contact;**

Suzi Gray

Technical Advisor

City & Guilds 07775 826899

Suzi.gray@cityandguilds.com

Qualification Support Resources

- Student Smartscreen for L3 Health & Care units to include Professional Discussion video
- National Technical Advisers to support your delivery teams in house including qualification 'on-boarding' events
- In year in-house centre tutor support events for centres delivering the qualifications

Centre Support Guides

- Employer Involvement Guide and Employer Planner and Tracker
- Technical Learning & Assessment Guide
- Marking & Moderation Guide
- 'Moderation Portal' – digital platform for external moderation purposes

“It is clear that real active learning is taking place.”

- **Colette Burgess**
West Suffolk College
Course Director / Lecturer

Questions?

Paul Robottom
Technical Advisor
paul.robottom@cityandguilds.com
07833 334 131

