

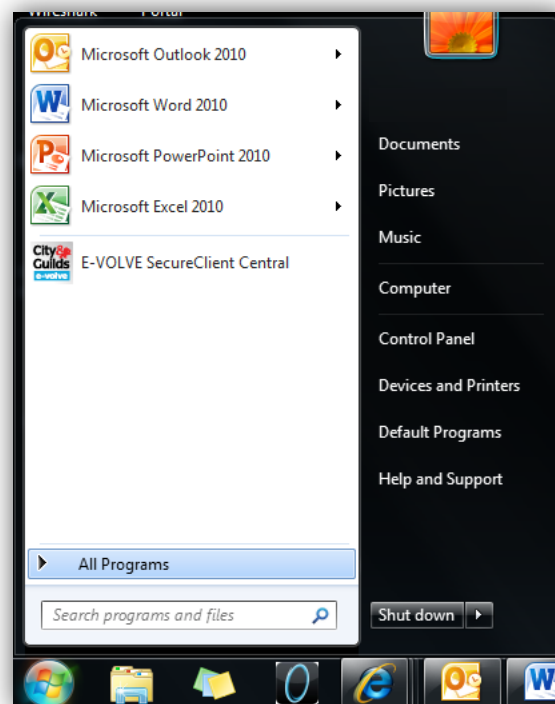


## **Using the Microsoft Windows 7 Magnifier with e-volve**

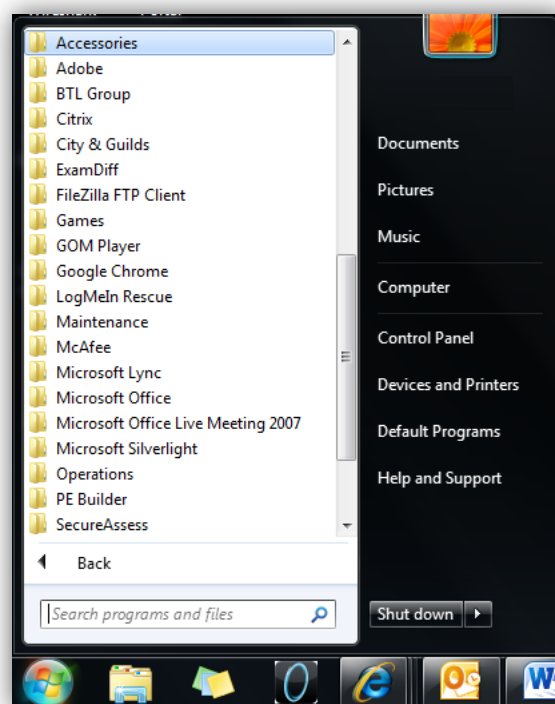
April 2013

Magnifier is provided free with Windows 7 and will be installed by default unless specified otherwise during the Windows 7 installation. The following is a step by step guide on how to use Magnifier with e-volve.

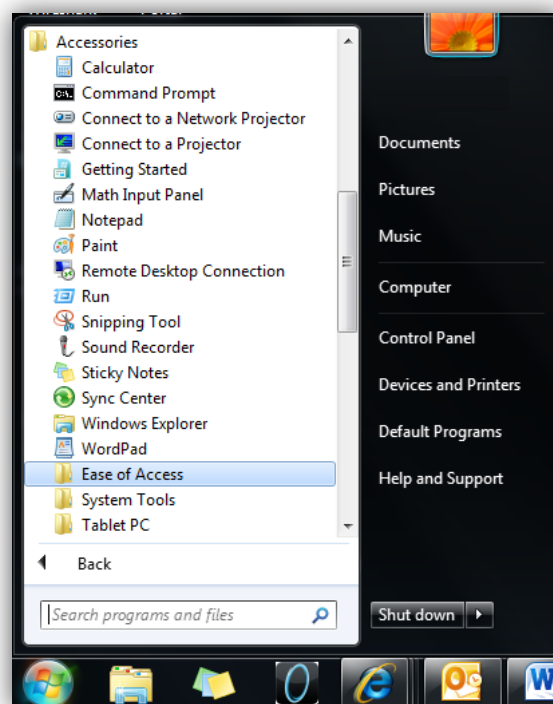
1. Click the Windows Start button and select [All Programs](#).



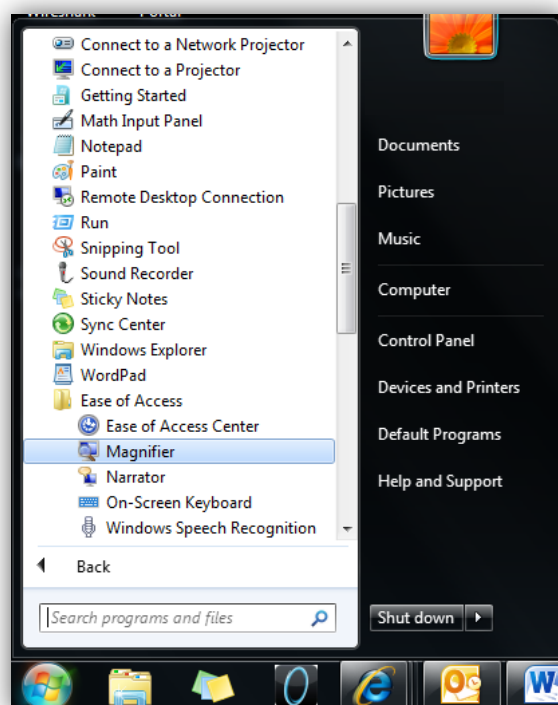
2. Select [Accessories](#).



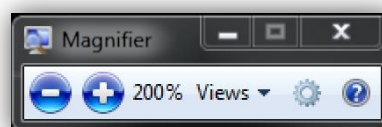
3. Select [Ease of Access](#).



4. Select [Magnifier](#).



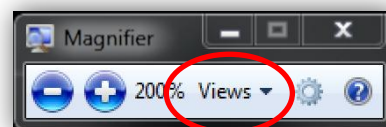
This will load Magnifier and with its default settings magnifying the entire screen by 200%.



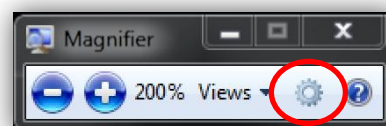
The Magnifier application will change to this icon:  
Simply click on it to return it to its previous state.



By selecting the [Views](#) option you can switch between [Full Screen](#), [Lens](#) and [Docked](#) mode. Docked mode is not compatible with SecureClient but please try both Full Screen and Lens mode and use which ever you prefer.



If using Lens mode you can adjust the size of the Lens in the Magnifier Options, accessible by selecting the cog symbol.



Once you have Magnifier set up to your personal preferences simply start SecureClient as normal and your Magnifier settings will persist.