

Skills for Work & Life - Reflecting back and looking forward

July 2024

Katherine Reid & Alicja Twarowska



This webinar is being recorded and will be available on the Resource Hub shortly

Housekeeping



This session is being recorded

The session is being recorded, which will be made available on our [Resource Hub webpage](#).



Everyone is on mute

Everyone is on mute.



Slides

The slides will be available on the [Resource Hub webpage](#).



Questions

Please add your questions into the question function on the control panel. Will we endeavour to answer all questions.



If the session cuts off

Please try logging out and back in again using the original webinar link to gain access back into the session.

To join over the telephone, select "Phone Call" in the Audio pane and the dial-in information will be displayed.

Introductions



Katherine Reid
**Lead Technical
Advisor**

Providing guidance and support across Maths,
English, DFSQ, Employability and ESOL
qualifications.

[Technical Advisors | City & Guilds](#)



Alicja Twarowska
Technical Advisor

Providing guidance and support across
Maths, English, DFSQ, Employability and
ESOL qualifications.

[Technical Advisors | City & Guilds](#)

pre-employment@cityandguilds.com

We will be focusing on...

Reflecting on this academic year

- Access previous webinars via the **Resource Hub**
- Launch of our new Digital FS offer
- Closure of legacy FS ICT qualifications
- FS assessments – Flash to HTML and New ICE document
- ESOL- change to GLH
- Employability - changes to qualifications
- Smart Screen – hosted on Canvas

Looking forward for 2024/2025

- Changes to Entry Level Functional Skills
- Focus Groups, Webinars and Support Events next academic year



Accessing the SfWL webpage

SfWL Landing page

Allow you to access all the qualification and resources in one place.

- Functional Skills
- ESOL
- Employability
- Essential Skills Wales
- Essential Skills Northern Ireland
- Developmental maths and English
- Resource hub
- Events and networks
- Customer updates



Skills for Work and Life

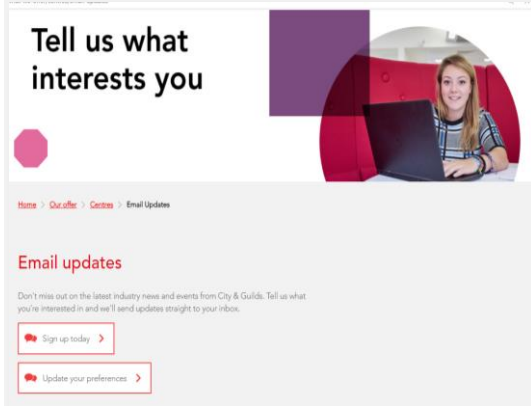
Home > Our offer > Centres > Skills for work and life

Skills for Work and Life

We all need to develop and use more, English, digital and employability skills throughout life. Our programmes in these areas support learners to start and continue to progress in education and work. Explore our offer below.

<p>FUNCTIONAL SKILLS</p> <p>Learn More ></p>	<p>ESOL</p> <p>Learn More ></p>	<p>EMPLOYABILITY</p> <p>Learn More ></p>
<p>ESSENTIAL SKILLS WALES</p> <p>Learn More ></p>	<p>ESSENTIAL SKILLS NORTHERN IRELAND</p> <p>Learn More ></p>	<p>PROGRESSION QUALIFICATIONS</p> <p>Learn More ></p>
<p>RESOURCE HUB</p> <p>Learn More ></p>	<p>EVENTS AND NETWORKS</p> <p>Learn More ></p>	<p>CUSTOMER UPDATES</p> <p>Learn More ></p>

Keeping up to date



Email alerts

Keep up to date within the SfWL sector. Insert your contact details and choose your preferences.

Customer updates

Home of all the updates and announcements for SfWL.

Events and networks

Details of confirmed dates for all SfWL webinars, networks and events.

Resource Hub

Access all the information around digital teaching, resources and recordings of webinars.

Reflecting back on September 2023 to July 2024



Closure of legacy FS ICT qualifications

FS ICT 3748-03 closed for new reg at the end of July 2023.

Final certification date will be 31.07.2024.

This date was set by the DfE and Ofqual and it's not possible for us to change this.





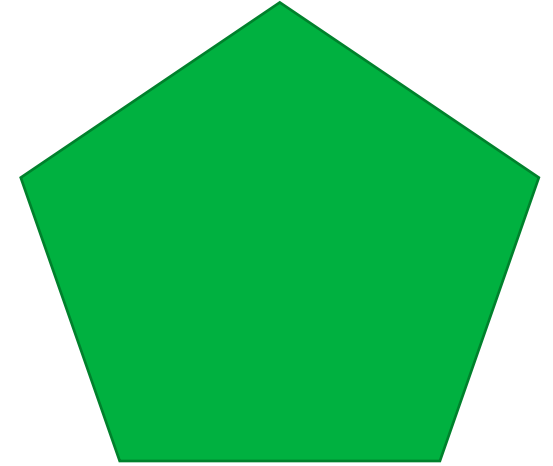
Launched 1 September 2023

**[digital-functional-skills-qualifications](https://www.cityandguilds.com)
[cityandguilds.com](https://www.cityandguilds.com)**

Digital Functional Skills Qualifications

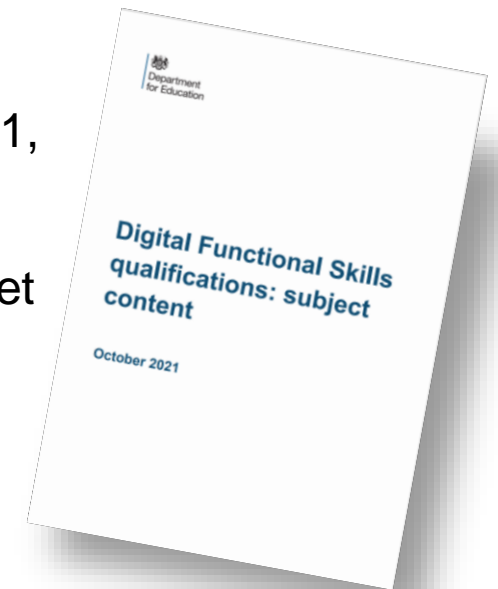
Digital skills areas covered:

- Using Devices and handling information
- Creating and editing
- Communicating
- Transacting
- Being safe and responsible online



Available at Entry Level 3 and Level 1,
55GLH at each level.

Onscreen assessments: externally set
and marked.



Impact from Flash to HTML

Functional Skills assessments migrated from Flash to HTML in September 2023, this led to a new bank of assessments.

This change did impact our release of results.

We now have returned to our normal way of working.

Recent report on results turnaround:

Delivery Mode	1 March to 30 May 2024 - results returned, on average, within:
Onscreen exams	3 days
Paper-based exams	2 days

Functional Skills results release times

Instructions for Conducting Examinations Document

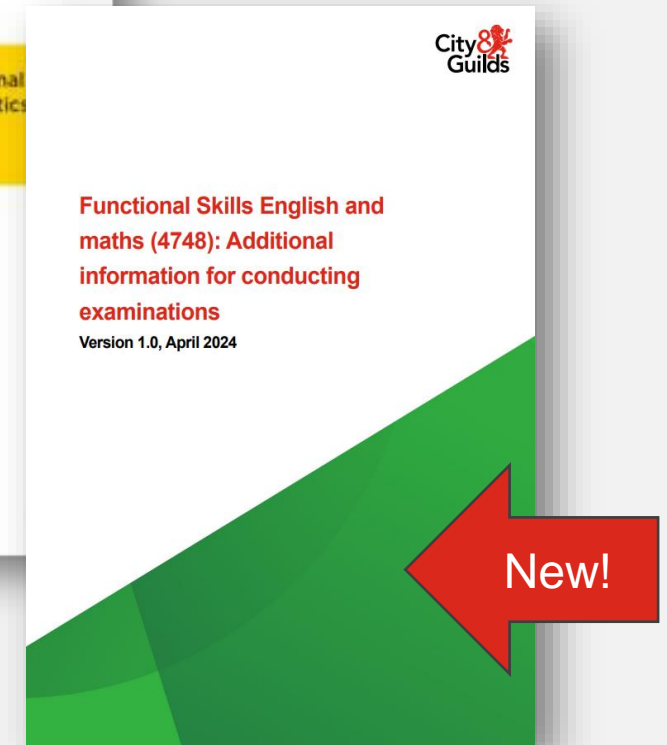
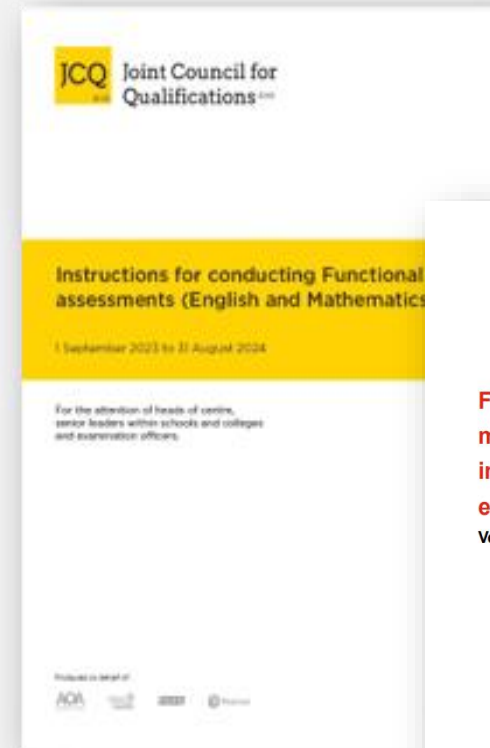
New/ updated requirements:

- Invigilation report
- Same starting time
- Transport log
- Verbal reminder of the end –10 min
- Clock
- All PCs logged on
- Attendance sheets

April 2024 Webinar:

New Instructions for Conducting FS Exams documents –

[watch the recording](#)



[Functional Skills English and maths \(4748\): Additional information for conducting examinations \(cityandguilds.com\)](#)

ESOL

Update to ESOL GLH

[Important Update for ESOL Skills for Life qualifications](#)

New assessment packs:

E1-E3: Education & Learning

Removed ESOL assessment packs

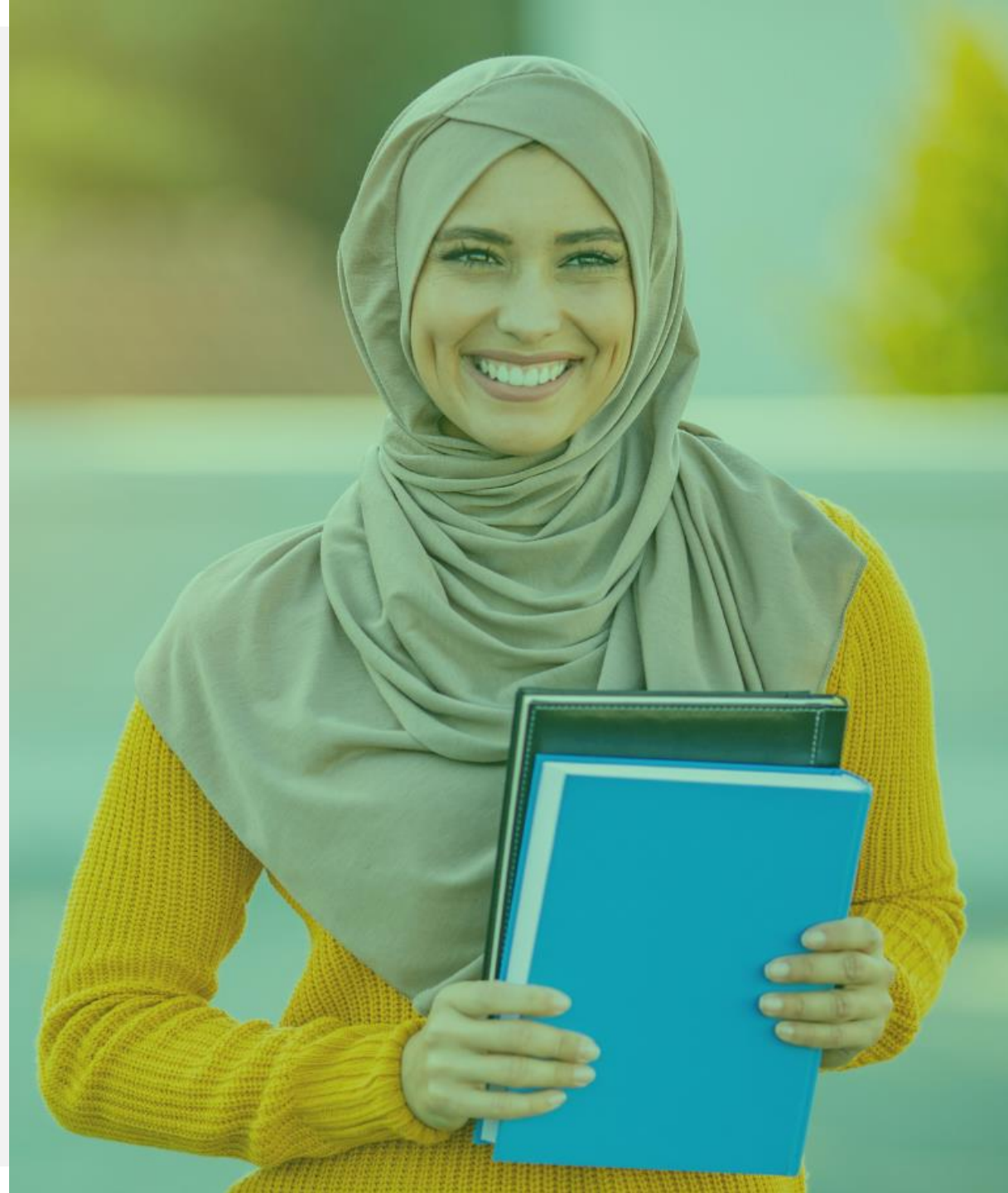
E3: Education & Learning and Me & My Health

L1: Hobbies & Interests and Sports & Keeping Fit

L1&2: Travel and Transport

[Skills for Work and Life Updates](#)

New passwords: E3 and Level 1



Employability Skills (5546) Changes to qualifications

Skills for Work & Life team

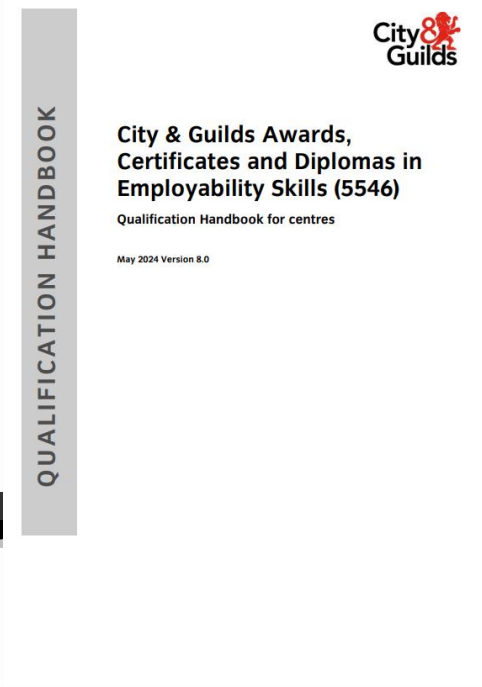
April 2024 Update



[Changes to Employability \(5546\) watch the recording](#)
[Changes to Employability \(5546\) download the slides](#)

Employability Skills (5546) changes

In April 2024 we held a webinar updating all the upcoming changes to Employability, from 1 September 2024.



Updated
handbook
available on
the 5546-
qualification
page

Smart Screen

Teaching and learning resources

- developing skills activities
- 150 maths and English videos
- interactive e-learning
- worksheets
- classroom games and activities
- card sorts/matching
- exam preparation videos
- speaking and listening videos
- and much more....

Updated!

City & Guilds

Maths (3844, 3847, 3850, 3868, 4748, 4800) > Modules

SmartScreen Mathematics

Worksheet 22: Budgeting

Collapse all

Account

Admin

Dashboard

Courses

Calendar

Inbox

History

Enrol In A

▼ Maths resource guides

Functional Skills Maths

Entry Level 1 Fun

Entry Level 2 Fun

Entry Level 3 Fun

Level 1 Function

Level 2 Function

What was the balance brought forward?

How much was spent at Daten Electricals?

Below is a copy of a friend's bank statement

Date	Description
13 April	
13 April	Asdo Stores Ltd
14 April	Daten Electricals
16 April	UP Petrol
17 April	Water rates
20 April	Mobile Phone - Phones RGR8
21 April	Worthington Mortgage Facilities

Measuring size

1. Talking about measurement

Select the play button to see the clues hidden in the words we use to

NUMBERS

Solving X problems

Select the play button to get started

KEY TERMS

multiply times

2 pills 3 times a day

Mon Tues Weds Thurs Fri Sat Sun

millime

centime

metre

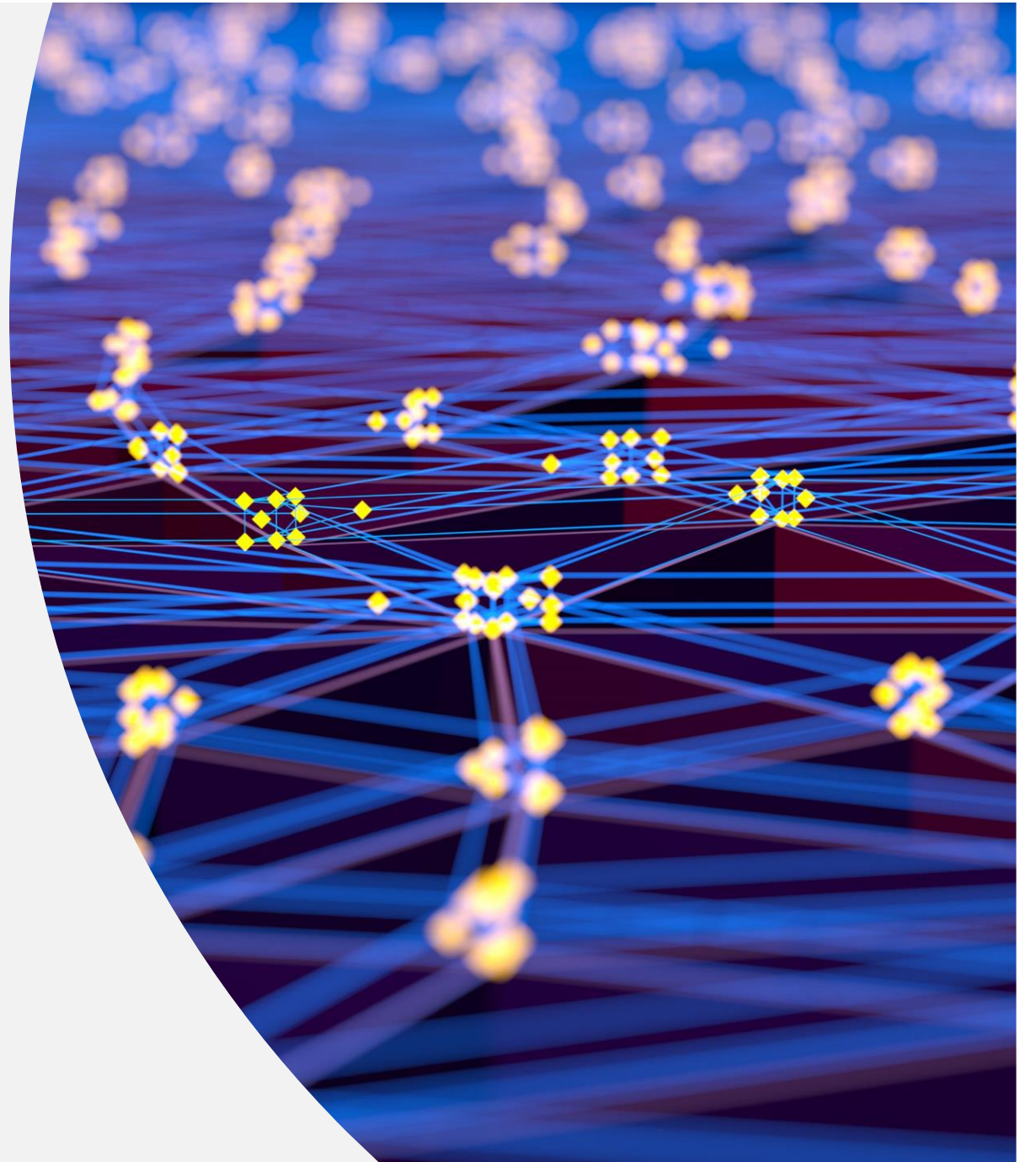
kilome

0:00 / 1:19

0:00 / 1:37

[SmartScreen | City & Guilds \(cityandguilds.com\)](https://www.cityandguilds.com)

Looking forward for 2024/2025



Changes to entry level Functional Skills in September 2024

New live materials

New live assessments will be made available for each subject at each level from **2nd September 2024**

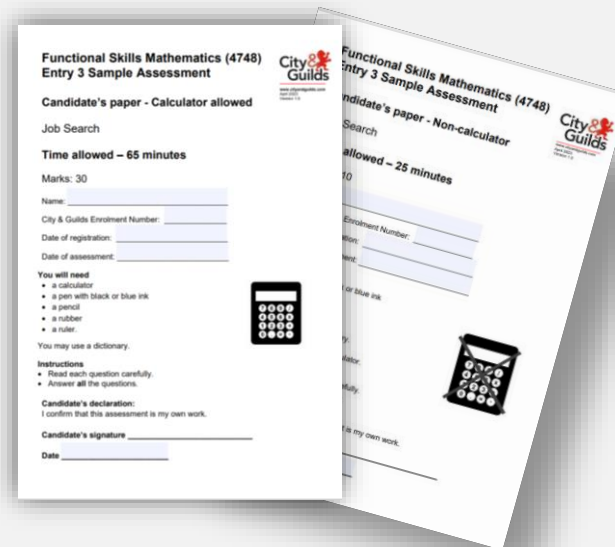
Current versions will be removed, and learners must not sit these on or after **2nd September 2024**.

Centres must destroy any digital or paper copies of the current assessments.



Administration of assessments

- New passwords
- Editable pdf formats
- **Reminder** about the need to track Assessments



	B	C	D	E
	C&G Enr No	Level of Assessment	Date of Assessment	Assessment Title
1				
2				
3				
4				
5				
6				
7				
8				

Support available

Webinars

We will continue to support you by sharing the updates via our webinars.

New to us

Online monthly onboarding for new staff and centres.

Virtual Link-ups

Can't attend one of our face-to-face events? You can join us online, to connect and share good practice.

Connect-Share-Networks

Join our Technical Advisors for an interactive half day of sharing good practice.

Focus Groups

We will hold qualification focus groups throughout the academic year and ask providers to attend and contribute to them.



[Events and Webinars - Maths and English | City & Guilds](#)

New for 2024/2025 Question Corner

Drop in sessions

Questions and answers

You can send any questions you may have to...

pre-employment@cityandguilds.com



Q&A



Email contacts

For general queries including, e-verify and RI issues contact:

customersupport@cityandguilds.com

For maths and English queries contact:

pre-employment@cityandguilds.com

For evolve support contact:

evolvesupport@cityandguilds.com

Thank you!

This recording and slide deck will be shortly available on the Resource Hub webpage.

We will be back in September 2024 with a host of new webinars.

[Events and webinar webpage](#)

About City & Guilds

Founded in 1878 to develop the knowledge, skills, and behaviours needed to help businesses thrive, we offer a broad and imaginative range of products and services that help people achieve their potential through workbased learning. We believe in a world where people and organisations have the confidence and capabilities to prosper, today and in the future. So we work with likeminded partners to develop the skills that industries demand across the world.

About ILM

ILM is the leading specialist provider of leadership qualifications in the UK. Last year, over 70,000 people enhanced their skills and performance with ILM, including 14,000 management apprentices. We believe that great leaders can come from anywhere. With the right support, anyone can grow and develop to make a real difference to their team and organisation. Which is why we help individuals from all levels to realise and apply their potential, so that the organisations they work for can reap the benefits.

To learn more about City & Guilds Maths, English and Functional Skills, please contact

centresupport@cityandguilds.com

[@CGMathsEnglish](#)

Alternatively, visit our dedicated webpages

**cityandguilds.com/functionalskills
cityandguilds.com/mathsandenglish**

City and Guilds Group

Giltspur House

5–6 Giltspur Street

London EC1A 9DE

