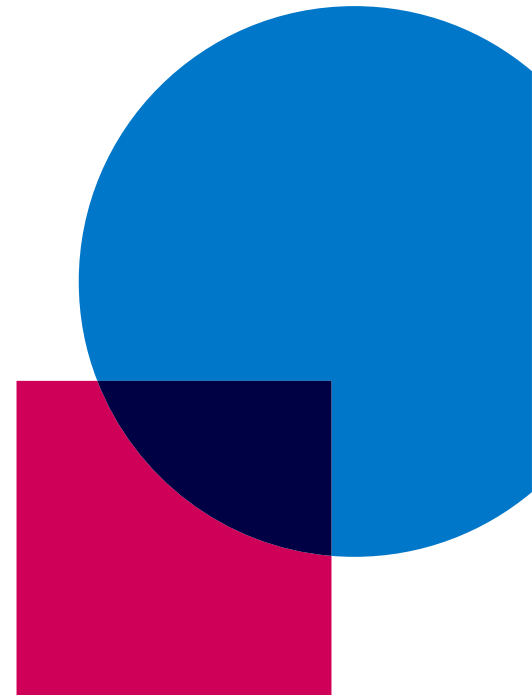


Beauty Therapy
Enhanced SmartScreen Factsheet
Level 2 Diploma for Beauty
Professionals: Beauty
Therapist (7003-12)



Enhanced SmartScreen Factsheet

Level 2 Diploma for Beauty Professionals: Beauty Therapist (7003-12)

City & Guilds SmartScreen

City & Guilds SmartScreen is our dedicated online resource portal, supporting over 120 qualifications. It currently boasts more than 80,000 resources and pages of content for tutors and learners.

How can SmartScreen help me?

SmartScreen materials have been designed specifically for each individual qualification. They have been developed to assist tutors, and others, delivering the qualification to obtain the best possible results for their learners.

Price: Please email digital.solutions@cityandguilds.com for details. Product code: SS7003-02.

Supported units: 208, 209, 210, 211, 212, 213, 214.

Resources

This package includes resources that also comprise the SS6003-L2 Enhanced SmartScreen Level 2 Technical Certificate in Beauty Therapy (6003-20). Please DO NOT purchase both packages. If you already have access to SS6003-L2 you can refer to the mapping document on SmartScreen to see how the resources can also be used to support teaching and learning for 7003-12.

This package includes:

- PowerPoint presentations – slide decks that allow tutors to save valuable preparation time, while still delivering a professional and engaging presentation in the classroom.
- Handouts – provide a convenient way of presenting key information to learners in a classroom setting. They save tutors time and give learners the confidence that they are receiving the information they require.
- Worksheets – these can be used by learners to review and implement what they have learned. Worksheets can be projected onto the whiteboard or downloaded for tutors to make changes and adapt to their own delivery style.
- Activities – an outstanding range of training activities that will keep learners engaged and motivated.

- Video e-learning – the units in this package are supported by video e-learning. This resource combines clear instructional videos with interactive questions to test learner knowledge. Each topic is split up into a series of 'lessons' dealing with consultation, routine and aftercare. Within each lesson a high-quality salon video demonstrates the skills learners need, with distinct chapters to allow easy navigation. Multiple choice questions pop up throughout each video to ensure the learner has watched and understood the material. Learners who answer incorrectly are given a useful hint and the ability to re-watch the relevant part so that they can re-attempt the question. Concise and informative feedback is also provided for each question to consolidate learner understanding. Upon achieving the pass mark for a lesson, learners will be given the option to watch the video without questions, allowing them to revise the material without interruption. Versions of the videos without questions will be available to tutors for teaching purposes.

- Revision questions – provide a good way of testing learner understanding and may also help them prepare for assessment. The questions are not taken from the live qualification question bank.

Why choose SmartScreen?

Shake learning up	Offers flexibility in lesson delivery and learning styles.
Learn inside and outside the classroom	With increased internet speeds available to learners using smartphones, laptops and tablets, resources can be accessed at any time and in any location.
Stay ahead	The definitive source for the most up-to-date information about qualification developments and delivery information.
Do what you do best	Our lesson plans, handouts and worksheets will save tutors time, meaning that they can keep their heads out of the paperwork and teach.
Peace of mind	Peace of mind that the resources fully support the qualification.

How do I subscribe?

Visit: Walled-Garden.com

Call: +44 (0) 844 543 0000 (Choose option 5 – SmartScreen)

Email: directsales@cityandguilds.com

Calls to 0844 numbers cost 7p per minute plus your telephone company's access charge.

Every effort has been made to ensure that the information contained in this publication is true and correct at time of going to press. However, City & Guilds' products and services are subject to continuous development and improvement, and the right is reserved to change products and services from time to time. City & Guilds cannot accept any loss or damage arising from the use of information in the publication. ©2019 City and Guilds London Institute. All rights reserved. City & Guilds is a trademark of the City and Guilds of London Institute. City & Guilds is a registered charity (number 312832) established to promote education and training. 1 Giltspur Street, London EC1A 9DD. T +44 (0)844 543 0000. cityandguilds.com.