

Initial Verification Periodic Inspection & Testing qualifications Webinar



Today's hosts are:

David Pye - Technical Advisor

Peter Tanner – Senior Consultant

Salim Visram – Industry Manager

23.05.2017

We will be starting shortly



AGENDA

- Getting the most from the webinar
- Qualification History and introduction to the new City & Guilds 2391
- Structure and Assessment Strategy
- Next Steps & Go –Live?
- City and Guilds support
- Q&A

Qualification Purpose

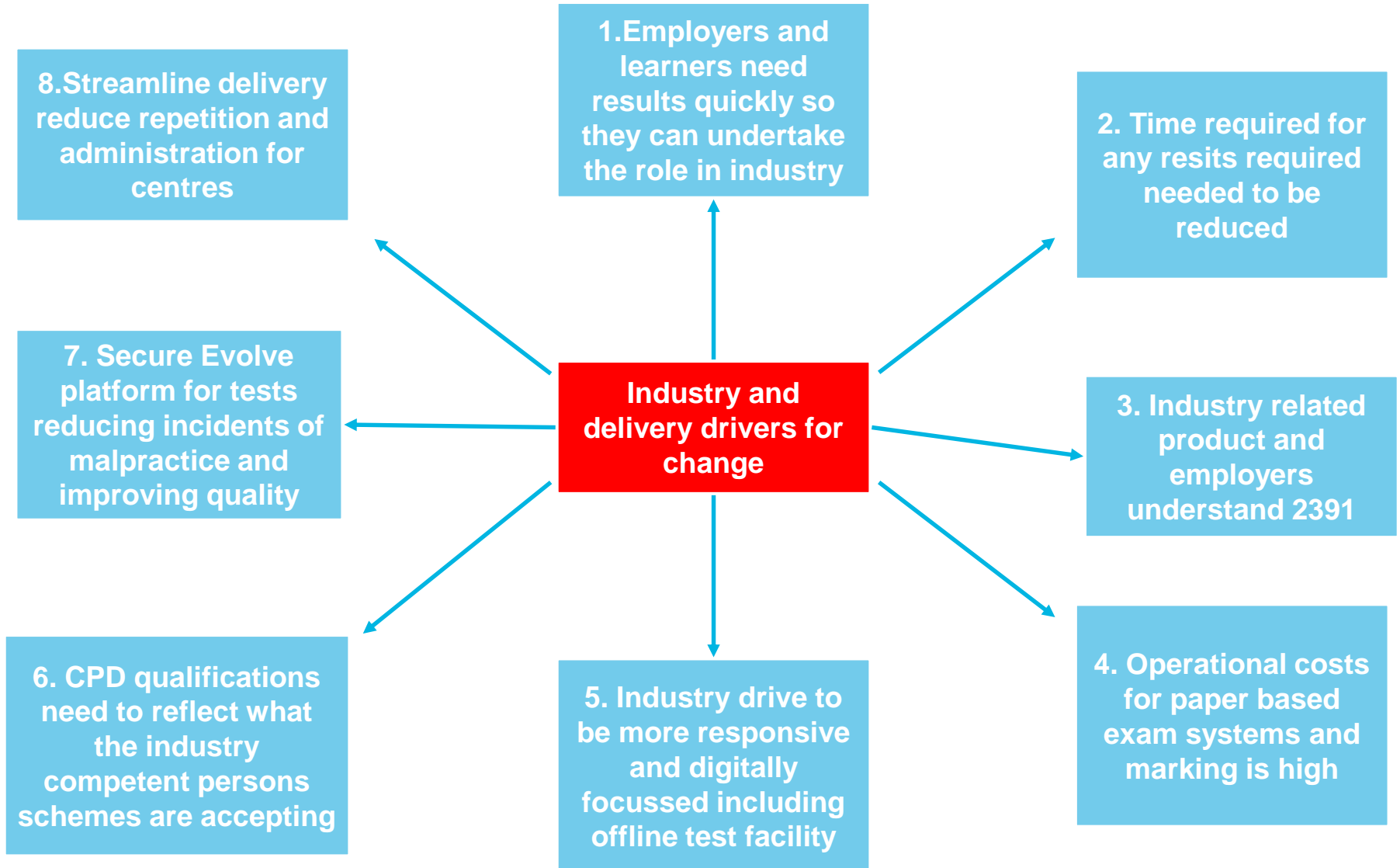
What are these inspection and testing qualifications and how are they related to industry and competent persons schemes?

- It is aimed at practising electricians who have not carried out inspection and testing since qualifying or who require some update of training before going onto other City & Guilds qualifications. The qualification is also suitable for those with limited experience of initial inspection and periodic inspection of electrical installations, such as those entering the industry from other engineering disciplines or who have been working in allied trades
- These new versions are a direct replacement for 2394 and 2395 and continue to meet the industry CPD needs
- These new products are recognised by the JIB under the ECS card scheme

Qualification history

- **1995 - 2391** First introduced as NICEIC required a specialised qualification for inspectors to be competent with IET GN3. It was initially multiple choice.
- **1996-** Saw the examination become written format with 20 short questions and 6 structured.
- **2012-** Saw the qualification split into 2394 and 2395 as industry wanted specific Initial Verification and Periodic qualifications
- **2012-** The new 2357 apprenticeship assessed Initial Verification to higher standards and QCF rules stated it shouldn't be assessed again.
- **2017** – 5 year product review

WHY? The drivers for change from industry and the delivery network!!



Structure of the qualifications



PAUSE FOR QUESTIONS

We will just pause for **two minutes** to allow delegates to reflect on the initial slides and to send in questions before moving on

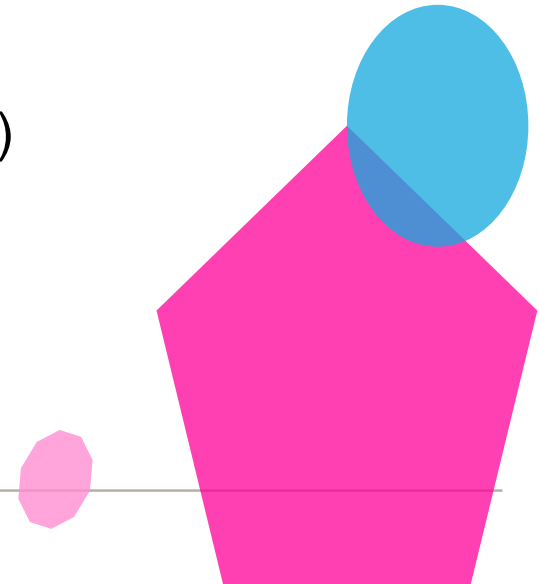


Re-introducing the new City and Guilds 2391

The IET were on the development group for this project

2017 - will now see 2391 revised to allow for all possible pathways required for industry such as:-

- completing apprentices and engineers who only need periodic (2391-51)
- domestic installers who only need Initial (2391-50)
- practicing electricians who want both disciplines periodic and initial (2391-52)

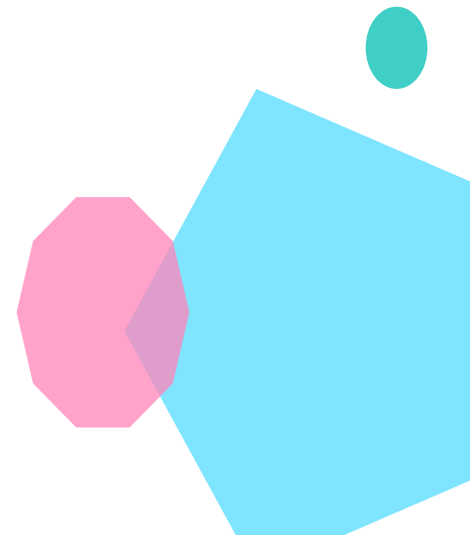


Assessment Strategy 2391-50 initial



2391-50 Level 3 Award in Initial Verification

- One 40 item 80 minute open book multiple-choice test
- Two practical assignment tasks to include:-
 - *inspection and test on main test rig*
 - *Short four item written questions*



Test specification 2391-50 Initial Verification

Test Specifications

The way the knowledge is covered in the test is laid out in the table below:

Assessment type: Multiple-choice exam

Assessment conditions: Open book exam/Invigilated exam

Grading: Pass/Fail

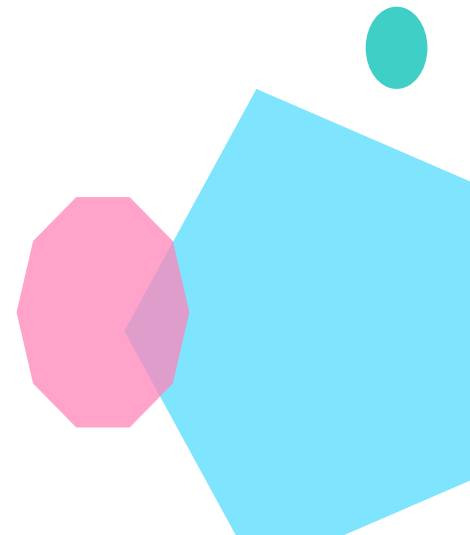
Test: 2391-050	Duration: 90 minutes		
Unit	Outcome	Number of questions	%
	1 Understand the requirements for initial verification of electrical installations	3	7
	2 Understand safety management procedures when undertaking initial verification	3	7
	3 Understand the requirements for the initial inspection of an electrical installation	7	18
	4 Understand the requirements for testing electrical installations at initial verification	27	68
	5 Perform inspection and testing of electrical installations	0	0
	Total	40	100

Assessment Strategy 2391-51 periodic



2391-51 Level 3 Award in Periodic Inspection & Testing

- One 40 item 80 minute open book multiple-choice test
- Three tasks for practical to include:-
 - Visual photo exercise (30 minutes)
 - inspection and test on the test rig
 - Short four item question paper



Test specification 2391-51: Periodic Inspection and Testing

Test Specifications

The way the knowledge is covered by each test is laid out in the table(s) below:

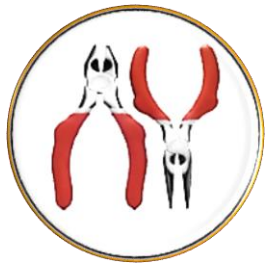
Assessment type: Multiple-choice exam

Assessment conditions: Open book exam/Invigilated exam conditions

Grading: Pass/Fail

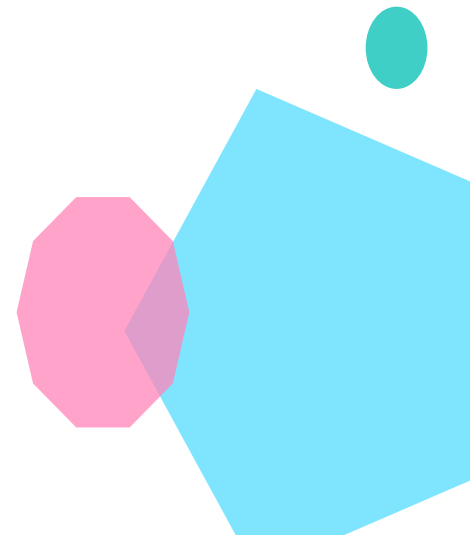
Test: 2391-051		Duration: 90 minutes minutes	
Unit	Outcome	Number of questions	%
501	1 Understand the requirements for periodic inspection and testing	5	13
	2 Understand safety management procedures when undertaking periodic inspection and testing	2	5
	3 Understand the requirements for the periodic inspection of an electrical installation	7	17
	4 Understand the requirements for testing electrical installations during periodic inspection and test	26	65
	5 Perform periodic inspection and testing of electrical installations	0	0
	Total	40	100

Assessment Strategy 2391-52- Combined



2391-52 Level 3 Award in Inspection & testing

- One 60 item 2 hour open book multiple-choice test
- Three tasks for practical to include
 - *Visual photo exercise (30 minutes)*
 - *inspection and test on the test rig*
 - *Short four item question paper*



Test specification 2391-52: Combined

Test Specifications

The way the knowledge is covered by each test is laid out in the table(s) below:

Assessment type: Multiple-choice exam

Assessment conditions: Open book exam/Invigilated exam conditions

Grading: Pass/Fail

Test: 2391-052	Duration: 120 minutes		
Unit 502	Outcome	Number of questions	%
	1 Understand requirements for inspection and testing	13	22
	2 Understand safety management procedures when undertaking inspection and testing	3	3
	3 Understand the requirements for the inspection of electrical installations	11	19
	4 Understand the requirements for testing electrical installations	33	56
	5 Perform inspection and testing of electrical installations	0	0
	Total	60	100

Example question for the short answer paper (open book)

Explain why an Electrical Installation Certificate is retained.

Answers may include:

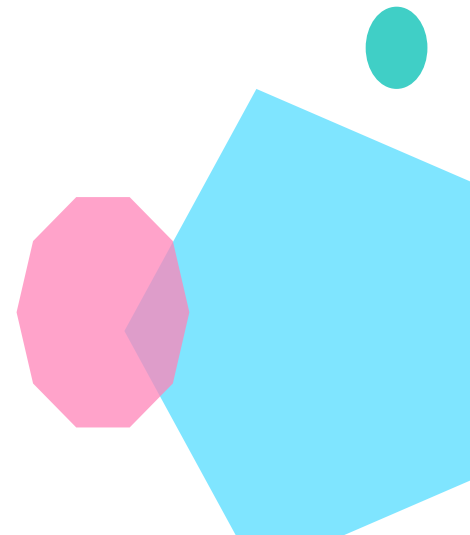
- Compliance with CDM
- Future inspections
- Selling property
- Insurance or mortgage

Or any other suitable answer to industry requirement accepted by the assessor.



What resources are allowed for assessment?

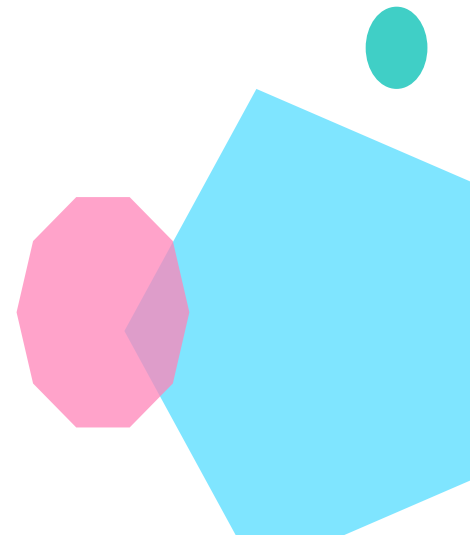
- With the exception of the visual inspection task, candidates may use for all assessments-
 - BS 7671
 - IET On-site Guide
 - IET Guidance Note 3



Structure and Assessments

What Improvements have we made from our detailed analysis

- Fewer tasks in the practical assessments
- No visual boards, insulation resistance or earth loop impedance boards needed
- Specifically designed combined assessment
- (So) Those taking initial and periodic do not need to do two separate assessments
- One practical process assesses both skills
- One on-line multiple choice assessment



PAUSE FOR QUESTIONS

We will just pause for **two minutes** to allow delegates to send in questions before moving on

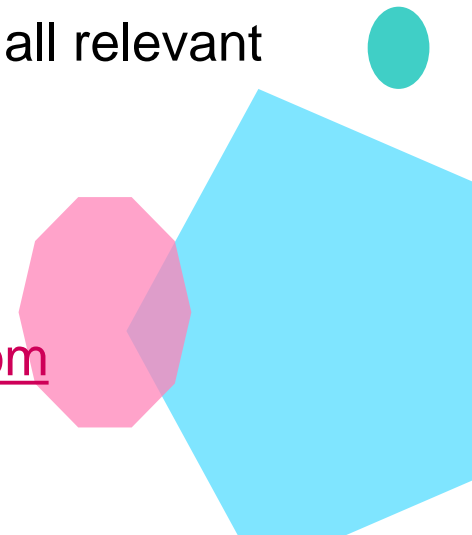


Next steps and Go–Live

- Centres will have automatic approval if they are currently delivering 2394 and 2395
- 2394 & 2395 registration expires end of August 2017
- The final 2394 & 2395 written dated entry exams, included on demand, will be December 2017
- The new 2391 will go live on 24th May 2017
- The following new web page has been set up [Here](#) were all relevant documents can be found

New approvals or if further information please contact

- Michael McArthur - Michael.McArthur@cityandguilds.com
- Or your business manager/technical advisor



JUST THE LAST FEW SLIDES

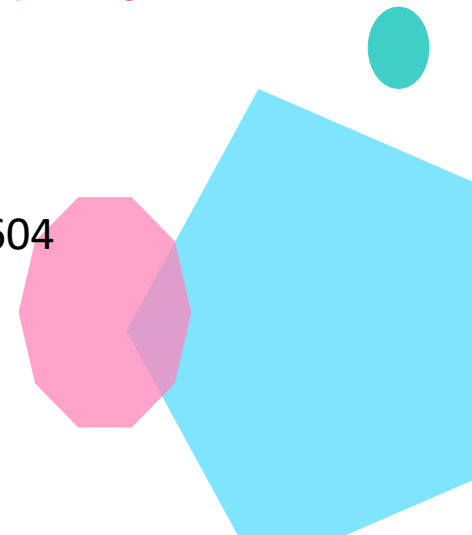
Please start to consider your questions, we will try to answer them all following the final few slides



BUILDING SERVICES TEAM

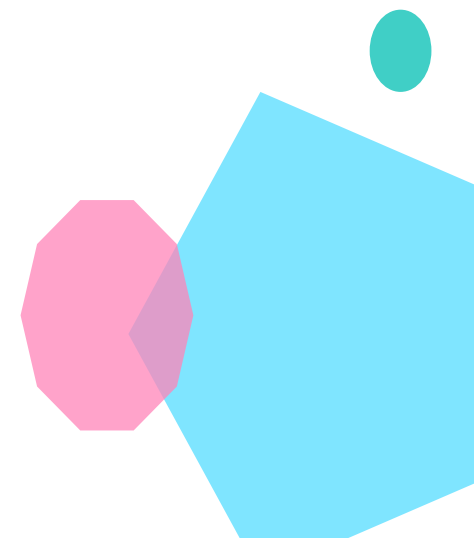
- Darren Quinn (Product Executive) - Darren.quinn@cityandguilds.com
- Salim Visram (Industry Manager) - Salim.visram@cityandguilds.com
- Rob Mallender (Technical Advisor) – Rob.mallender@cityandguilds.com
- David Pye (Technical Advisor) – David.Pye@cityandguilds.com
- Peter Tanner (Senior Electrical consultant) – Peter.Tanner@cityandguilds.com
- Digital products – digitalsales@cityandguilds.com

•City & Guilds,1 Giltspur Street, London EC1A 9DD T +44 (0)20 7294 2604



EVOLVE ANALYTICS

- e-volve centre analytics is a new, free online results analysis tool for City & Guilds centres, that gives you in depth analysis of your learners' performance for evolve tests.
- With just a few clicks e-volve centre analytics will allow you to display your e-volve test data, in an easy to understand format. You will be able to analyse by date ranges, qualifications and units, view in various layouts and export for further analysis
- <http://www.cityandguilds.com/what-we-offer/centres/working-with-us/e-volve/e-volve-centre-analytics>



e-Certificates

- The [e-Certificates](#) service is available to all City & Guilds centres **at no cost**
- Once assigned a WG profile please contact on-line@cityandguilds.com to be issued access to the e-Certificates add-on.
- [Verify a certificate](#)



The screenshot shows the City & Guilds logo at the top left. Below it is a red navigation bar with three tabs: 'Home', 'Verify', and 'Web shop'. The 'Verify' tab is selected. Below the navigation bar is a breadcrumb trail: 'Home > Verify Certificate'. The main heading is 'Verify Certificate or City & Guilds Card'. Below the heading is a paragraph of text: 'To verify a certificate or a City & Guilds card, please enter the name as appears and certificate authentication code or the City & Guilds card access code.' Below this is another paragraph: 'It should be noted that a certificate without an authentication code may still be genuine and you should check with the issuing awarding organisation to ensure validity.' At the bottom, there is a label 'Name as appears on the certificate or the City & Guilds card:' followed by an empty text input field.

City & Guilds

Home Verify Web shop

Home > Verify Certificate

Verify Certificate or City & Guilds Card

To verify a certificate or a City & Guilds card, please enter the name as appears and certificate authentication code or the City & Guilds card access code.

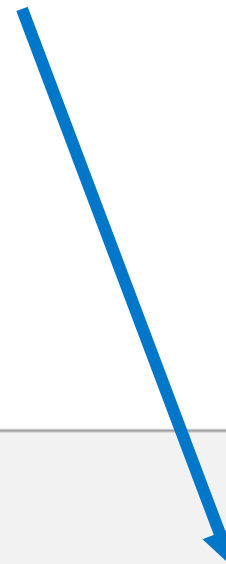
It should be noted that a certificate without an authentication code may still be genuine and you should check with the issuing awarding organisation to ensure validity.

Name as appears on the certificate or the City & Guilds card:

NEW! - Email updates – sign up today to be updated on:

- ✓ Qualifications
- ✓ Assessment changes
- ✓ C&Gs Events running
- ✓ [View page here](#)

Please follow us on twitter [@BSE_CG](#)



Tools and Support

Walled Garden

SmartScreen

Learning Assistant

Bookshop

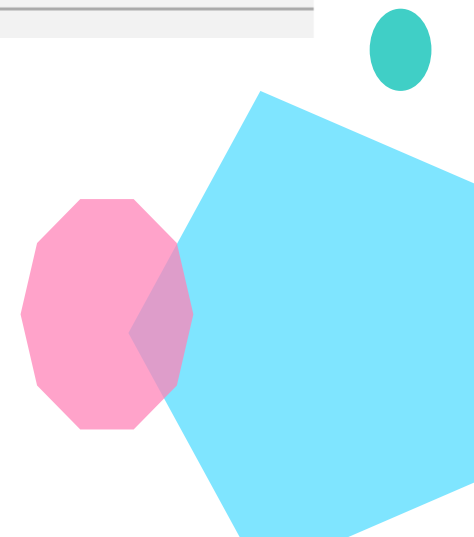
e-volve

Events

Email Updates



NOTE: Don't miss the email update!!!!



Thank you

Thank you for your attendance – we will now answer questions as they come through before closing

Please feedback to

feedbackandcomplaints@cityandguilds.com

