

6715-01 Level 1 Diploma in Stonemasonry

August 2014 Version 1.0

PRACTICAL TASK MANUAL

Contents

Candidate details	2
Unit assessment overview	3
Practical task completion record	3
Instructions to candidates	5
Unit 133 Setting out and templet making for stonemasonry components	6
Task 1 Set out full size details for moulded plinth stone	6
Task 2 Produce templets and moulds for a moulded plinth stone	8
Unit 134 Working stonemasonry components	12
Task 1 Cope a quarry block	12
Task 2 Produce flat, plane surfaces	14
Task 3 Work moulded plinth stone	16
Unit 135 Fixing stonemasonry components	19
Task 1 Set out and fix moulded plinth stone into surrounding masonry	19
Drawings and diagrams	22
Figure 1: Moulded plinth stone	22
Figure 2: Plan, front and side elevations	23
Figure 3: Isometric drawing	24

Candidate details



This *Practical task manual* is a record of your achievement in practical assessments. You must keep it in good condition and it must be stored in a safe place by your Assessor.

Please fill in all of your details before you carry out any assessments.

Candidate Details

Surname		Forename(s)	
---------	--	-------------	--

City & Guilds enrolment number	
--------------------------------	--

Centre Details

Name		Centre No	
------	--	-----------	--

I understand the requirements of the qualification and that all the work towards the assessments must be my own.

Candidate signature	
----------------------------	--

Assessor name (please print)		Signed	
--	--	--------	--

Date	
------	--

Unit assessment overview

Practical task completion record

To be completed by Assessor:

For each task, the points for each grade are
 Pass = 1, Merit = 2, and Distinction = 3 points.

Conversion chart	
Average	Overall Grade
1 – 1.5	Pass
1.6 – 2.5	Merit
2.6 – 3	Distinction

†All tasks must be passed for the unit to be achieved.

Unit 132 Principles of stonemasonry

Task	Grade for task†
Internally marked questions	P / X
Assessor signature and date:	Overall grade

Unit 133 Setting out and templet making for stonemasonry components

Task	Grade for task†	Points (graded tasks)
1. Set out full size details for moulded plinth stone	P / M / D / X	
2. Produce templets and moulds for a moulded plinth stone	P / M / D / X	
Internally marked questions	P / X	
	Total	
Assessor signature and date:	Divide total points from graded tasks by number of graded tasks	÷2
	Average =	
	Overall grade (see conversion chart)	

Unit 134 Working stonemasonry components

Task	Grade for task†	Points (graded tasks)
1. Cope a quarry block	P / X	
2. Produce flat, plane surfaces	P / M / D / X	
3. Work moulded plinth stone	P / M / D / X	
Internally marked questions	P / X	
Total		
Divide total points from graded tasks by number of graded tasks		÷2
Average =		
Overall grade (see conversion chart)		

Assessor signature and date:

Unit 135 Fixing stonemasonry components

Task	Grade for task†
1. Set out and fix moulded plinth stone into surrounding masonry	P / M / D / X
Internally marked questions	P / X
Overall grade	

Assessor signature and date:

Instructions to candidates

About this document

This *Practical task manual* contains all of the practical assessment for the 6715-01 Level 1 Diploma in Stonemasonry.

Practical tasks

These tasks let you show your practical skills and are usually graded pass, merit or distinction – a few are pass only. These tasks will be assessed by your assessor watching how you carry out the tasks and checking your final pieces of work.

Before you carry out the task you will be told how it will be assessed and you should read the observation checklist at the end of each task so you know what you need to do to get each grade.

You can ask your assessor for help in understanding the task instructions, but all of the work must be your own.

Health and safety

You must use safe working practices at all times.

You are responsible for your own safety and the safety of others. If you behave in an unsafe way, you will be stopped and given a warning. If you do not meet all of the Health and Safety requirements, the assessment will be stopped. Your assessor will not be able to let you try the task again until they are sure you can work safely.

Time considerations

Each task shows how long it is likely to take. This is for guidance and so you can plan your work. If you have a good reason for needing more time you must explain this to your assessor as soon as possible so they can decide whether you can have more time.

Security

Where an assignment is taken over more than one session, all documentation, paperwork and work products must be labelled carefully with your name and kept securely at the centre. Your assessor will give you directions about how to leave your work.

Opportunities to repeat tasks

The tasks are 'end tests' so you will only be asked to take the assessment when you have had the chance to do all of the learning and practice you need. You will be able to try the whole task again if you do not pass, but you will not be able to take the assessment again just to try to get a better grade.

Feedback

As well as telling you the result for the task, your assessor will give you feedback. They will give you a feedback sheet with details of what you could do to improve, and also what you did well. This will help you to prepare for other assessments or to retake the assessment if you need to.

Unit 133 Setting out and templet making for stonemasonry components

Task 1 Set out full size details for moulded plinth stone

Task coversheet

Expected time	2.5 hours
Task instructions	In this task you will be required to: <ul style="list-style-type: none"> • interpret information from drawings • set out full size details from drawings • complete a job card.
Diagrams	Figure 1: Moulded plinth stone, see page 22

Observation checklist

AC	The candidate has	Pass	Merit	Distinction
2.1, 2.6, 2.7	set out cavetto from bisected line	<input type="checkbox"/> Correct on 3rd attempt	<input type="checkbox"/> Correct on 2nd attempt	<input type="checkbox"/> Correct on 1st attempt
2.2, 2.6, 2.7	produced full size end elevation	<input type="checkbox"/> Correct on 3rd attempt	<input type="checkbox"/> Correct on 2nd attempt	<input type="checkbox"/> Correct on 1st attempt
2.2, 2.6, 2.9	produced full size plan	<input type="checkbox"/> Correct on 3rd attempt	<input type="checkbox"/> Correct on 2nd attempt	<input type="checkbox"/> Correct on 1st attempt
2.3, 2.6, 2.7	set out cyma reversa from equal divisions	<input type="checkbox"/> Correct on 3rd attempt	<input type="checkbox"/> Correct on 2nd attempt	<input type="checkbox"/> Correct on 1st attempt
2.4, 2.6	found mitres with the use of a compass, showing all construction lines	<input type="checkbox"/> Correct on 3rd attempt	<input type="checkbox"/> Correct on 2nd attempt	<input type="checkbox"/> Correct on 1st attempt
2.5	completed a job card with required information	<input type="checkbox"/>		
2.3, 2.8	drawn fixing slot in correct location	<input type="checkbox"/> Correct on 3rd attempt	<input type="checkbox"/> Correct on 2nd attempt	<input type="checkbox"/> Correct on 1st attempt
	drawn joggle in correct location	<input type="checkbox"/> Correct on 3rd attempt	<input type="checkbox"/> Correct on 2nd attempt	<input type="checkbox"/> Correct on 1st attempt

Task grading rules	Task grade:
To achieve a pass : <ul style="list-style-type: none"> • all pass criteria must be met. 	
To achieve a merit : <ul style="list-style-type: none"> • a minimum of 6/7 merit criteria must be met, and; • all the remaining criteria must be achieved to at least a pass standard, and; • candidates must not exceed the expected task time by more than 50%. 	
To achieve a distinction : <ul style="list-style-type: none"> • a minimum of 6/7 distinction criteria must be met, and; • the remaining graded criteria must be achieved to a merit standard, and; • all the non-graded criteria must be achieved to a pass standard, and; • candidates must not exceed the expected task time by more than 25%. 	
Assessor Name	
Assessor Signature	
Date	

Unit 133 Setting out and templet making for stonemasonry components

Task 2 Produce templets and moulds for a moulded plinth stone

Task coversheet

Expected time	2.5 hours
Task instructions	<p>In this task you will be required to:</p> <ul style="list-style-type: none"> • interpret information from a job card • complete a method statement and risk assessment • complete a resource checklist • transfer details from drawings • produce templets and moulds • keep a clean work area • work safely at all times.
Diagrams	Figure 1: Moulded plinth stone, see page 22

Observation checklist

AC	The candidate has	Pass	Merit	Distinction
4.2	completed a method statement for making templets and moulds	<input type="checkbox"/>		
4.3	completed a risk assessment for making templets and moulds	<input type="checkbox"/>		
4.1, 4.4, 4.5	completed a resource checklist for making templets and moulds	<input type="checkbox"/>		
4.1, 4.6, 4.7	produced zinc section square within a tolerance of ± 1 mm	<input type="checkbox"/> Correct on 3rd attempt	<input type="checkbox"/> Correct on 2nd attempt	<input type="checkbox"/> Correct on 1st attempt
	produced zinc section to correct dimensions	<input type="checkbox"/> Correct on 3rd attempt	<input type="checkbox"/> Correct on 2nd attempt	<input type="checkbox"/> Correct on 1st attempt
	produced section details in zinc within a tolerance of ± 1 mm:			
	<ul style="list-style-type: none"> • cyma recta 	<input type="checkbox"/> Correct on 3rd attempt	<input type="checkbox"/> Correct on 2nd attempt	<input type="checkbox"/> Correct on 1st attempt
	<ul style="list-style-type: none"> • fillet 	<input type="checkbox"/> Correct on 3rd attempt	<input type="checkbox"/> Correct on 2nd attempt	<input type="checkbox"/> Correct on 1st attempt

AC	The candidate has	Pass	Merit	Distinction
	<ul style="list-style-type: none"> cavetto 	<input type="checkbox"/> Correct on 3rd attempt	<input type="checkbox"/> Correct on 2nd attempt	<input type="checkbox"/> Correct on 1st attempt
	<ul style="list-style-type: none"> joggle 	<input type="checkbox"/> Correct on 3rd attempt	<input type="checkbox"/> Correct on 2nd attempt	<input type="checkbox"/> Correct on 1st attempt
	<ul style="list-style-type: none"> fixing slot 	<input type="checkbox"/> Correct on 3rd attempt	<input type="checkbox"/> Correct on 2nd attempt	<input type="checkbox"/> Correct on 1st attempt
	produced reverse for cyma recta within a tolerance of ± 1 mm	<input type="checkbox"/> Correct on 3rd attempt	<input type="checkbox"/> Correct on 2nd attempt	<input type="checkbox"/> Correct on 1st attempt
	produced reverse for cavetto within a tolerance of ± 1 mm	<input type="checkbox"/> Correct on 3rd attempt	<input type="checkbox"/> Correct on 2nd attempt	<input type="checkbox"/> Correct on 1st attempt
	produced plastic bed mould square within a tolerance of ± 1 mm	<input type="checkbox"/> Correct on 3rd attempt	<input type="checkbox"/> Correct on 2nd attempt	<input type="checkbox"/> Correct on 1st attempt
	produced plastic bed mould to correct dimensions	<input type="checkbox"/> Correct on 3rd attempt	<input type="checkbox"/> Correct on 2nd attempt	<input type="checkbox"/> Correct on 1st attempt
	produced bed mould details in plastic within a tolerance of ± 1 mm:			
	<ul style="list-style-type: none"> section lines 	<input type="checkbox"/> Correct on 3rd attempt	<input type="checkbox"/> Correct on 2nd attempt	<input type="checkbox"/> Correct on 1st attempt
	<ul style="list-style-type: none"> mitre lines (external and internal) 	<input type="checkbox"/> Correct on 3rd attempt	<input type="checkbox"/> Correct on 2nd attempt	<input type="checkbox"/> Correct on 1st attempt
	<ul style="list-style-type: none"> return and break 	<input type="checkbox"/> Correct on 3rd attempt	<input type="checkbox"/> Correct on 2nd attempt	<input type="checkbox"/> Correct on 1st attempt
	<ul style="list-style-type: none"> ashlar stop 	<input type="checkbox"/> Correct on 3rd attempt	<input type="checkbox"/> Correct on 2nd attempt	<input type="checkbox"/> Correct on 1st attempt
	<ul style="list-style-type: none"> fixing slot 	<input type="checkbox"/> Correct on 3rd attempt	<input type="checkbox"/> Correct on 2nd attempt	<input type="checkbox"/> Correct on 1st attempt

AC	The candidate has	Pass	Merit	Distinction
4.1, 4.8	annotated templates with necessary information on the:			
	<ul style="list-style-type: none"> section 	<input type="checkbox"/> Correct on 3rd attempt	<input type="checkbox"/> Correct on 2nd attempt	<input type="checkbox"/> Correct on 1st attempt
	<ul style="list-style-type: none"> reverses 	<input type="checkbox"/> Correct on 3rd attempt	<input type="checkbox"/> Correct on 2nd attempt	<input type="checkbox"/> Correct on 1st attempt
	<ul style="list-style-type: none"> bed mould 	<input type="checkbox"/> Correct on 3rd attempt	<input type="checkbox"/> Correct on 2nd attempt	<input type="checkbox"/> Correct on 1st attempt
4.9	stored templates correctly while not in use	<input type="checkbox"/>		
4.10	disposed of waste materials appropriately	<input type="checkbox"/>		
4.4, 4.11, 4.12	followed current environmental and relevant health and safety regulations	<input type="checkbox"/>		
	used tools, equipment and materials in a safe manner	<input type="checkbox"/>		
	used and maintained PPE as appropriate	<input type="checkbox"/>		
	maintained a clean and safe working area	<input type="checkbox"/>		
	cleaned and returned all tools and equipment once the task is complete.	<input type="checkbox"/>		

Task grading rules	Task grade:
To achieve a pass : <ul style="list-style-type: none"> • all pass criteria must be met. 	
To achieve a merit : <ul style="list-style-type: none"> • a minimum of 13/19 merit criteria must be met, and; • all the remaining criteria must be achieved to at least a pass standard, and; • candidates must not exceed the expected task time by more than 50%. 	
To achieve a distinction : <ul style="list-style-type: none"> • a minimum of 13/19 distinction criteria must be met, and; • the remaining graded criteria must be achieved to a merit standard, and; • all the non-graded criteria must be achieved to a pass standard, and; • candidates must not exceed the expected task time by more than 25%. 	
Assessor Name	
Assessor Signature	
Date	

Unit 134 Working stonemasonry components

Task 1 Cope a quarry block

Task coversheet

Expected time	To assessor's discretion.
Task instructions	<p>In this task you will be required to:</p> <ul style="list-style-type: none"> • interpret a method statement and risk assessment • complete a resource checklist • cope a quarry block to specified dimensions • keep a clean work area • work safely at all times.
Diagrams	n/a

Observation checklist

AC	The candidate has	Pass	Merit	Distinction
2.2	completed a method statement for coping a quarry block	<input type="checkbox"/>		
2.3	completed a risk assessment for coping a quarry block	<input type="checkbox"/>		
2.6	completed a resource checklist	<input type="checkbox"/>		
2.5	selected an appropriate stone for coping	<input type="checkbox"/>		
2.7	boned in stone for coping	<input type="checkbox"/>		
	marked out stone for coping	<input type="checkbox"/>		
	set up block ready for coping	<input type="checkbox"/>		
	coped block to ensure a consistent split	<input type="checkbox"/>		
2.4, 2.12, 2.13, 2.14	followed current environmental and relevant health and safety regulations	<input type="checkbox"/>		
	used tools, equipment and materials in a safe manner	<input type="checkbox"/>		
	used and maintained PPE as appropriate	<input type="checkbox"/>		
	maintained a clean and safe working area	<input type="checkbox"/>		
	cleaned and returned all tools and equipment once the task is complete.	<input type="checkbox"/>		

Task grading rules		Task grade:
To achieve a pass : <ul style="list-style-type: none">• all pass criteria must be met.		
Assessor Name		
Assessor Signature		
Date		

Unit 134 Working stonemasonry components

Task 2 Produce flat, plane surfaces

Task coversheet

Expected time	To assessor's discretion.
Task instructions	<p>In this task you will be required to:</p> <ul style="list-style-type: none"> • complete a method statement and risk assessment • complete a resource checklist • produce flat, plane surfaces to industry standards • produce a boastered finish to surfaces • keep a clean work area • work safely at all times.
Diagrams	n/a

Observation checklist

AC	The candidate has	Pass	Merit	Distinction
2.2	completed a method statement for producing flat, plane surfaces	<input type="checkbox"/>		
2.3	completed a risk assessment for producing flat, plane surfaces	<input type="checkbox"/>		
2.4, 2.6	completed a resource checklist	<input type="checkbox"/>		
2.8	worked plane surfaces true, out of twist and square	<input type="checkbox"/> At least three sides worked correctly	<input type="checkbox"/> At least three sides worked correctly, with at least two correct on 1st attempt	<input type="checkbox"/> At least three sides worked correctly on 1st attempt
2.10	produced boastered finish to surfaces	<input type="checkbox"/> no more than 6 errors over 3 sides	<input type="checkbox"/> no more than 5 errors over 3 sides	<input type="checkbox"/> no more than 4 errors over 3 sides
2.4, 2.12, 2.13, 2.14	followed current environmental and relevant health and safety regulations	<input type="checkbox"/>		
	used tools, equipment and materials in a safe manner	<input type="checkbox"/>		
	used and maintained PPE as appropriate	<input type="checkbox"/>		
	maintained a clean and safe working area	<input type="checkbox"/>		
	cleaned and returned all tools and equipment once the task is complete.	<input type="checkbox"/>		

Task grading rules	Task grade:
To achieve a pass : <ul style="list-style-type: none"> • all pass criteria must be met. 	
To achieve a merit : <ul style="list-style-type: none"> • both merit criteria must be met, and; • all the remaining criteria must be achieved to at least a pass standard. 	
To achieve a distinction : <ul style="list-style-type: none"> • both distinction criteria must be met, and; • all the remaining criteria must be achieved to at least a pass standard. 	
Assessor Name	
Assessor Signature	
Date	

Unit 134 Working stonemasonry components

Task 3 Work moulded plinth stone

Task coversheet

Expected time	Between 12 and 20 hours (dependant on stone type and natural variations).
Task instructions	<p>In this task you will be required to:</p> <ul style="list-style-type: none"> • interpret information from a job card, drawings and specifications • complete a method statement and risk assessment • complete a resource checklist • work a moulded plinth stone • keep a clean work area • work safely at all times.
Diagrams	Figure 1: Moulded plinth stone, see page 22

Observation checklist

AC	The candidate has	Pass	Merit	Distinction
2.1	interpreted information from a job card, drawings and specifications	<input type="checkbox"/>		
2.2	completed a method statement for working a moulded plinth stone	<input type="checkbox"/>		
2.3	completed a risk assessment for working a moulded plinth stone	<input type="checkbox"/>		
2.4 2.6	completed a resource checklist	<input type="checkbox"/>		
2.9, 2.11	selected a stone as specified by assessor	<input type="checkbox"/>		
	ensured the stone is true, out of twist, square and of correct dimensions (± 1 mm over 300 mm)	<input type="checkbox"/>		
	identified any faults in the stone and (where applicable):			
	<ul style="list-style-type: none"> • recorded on the resource checklist 	<input type="checkbox"/>		
	<ul style="list-style-type: none"> • reported to the assessor 	<input type="checkbox"/>		
	clearly marked bedding plane on the back of the stone	<input type="checkbox"/>		
	marked up the stone from templates	<input type="checkbox"/>		
	run lines through with pencil and scribe where appropriate	<input type="checkbox"/>		
	cut worked details to include:			

AC	The candidate has	Pass	Merit	Distinction
	<ul style="list-style-type: none"> cyma recta 	<input type="checkbox"/> no more than 3 errors	<input type="checkbox"/> no more than 2 errors	<input type="checkbox"/> no errors
	<ul style="list-style-type: none"> fillet 	<input type="checkbox"/> no more than 3 errors	<input type="checkbox"/> no more than 2 errors	<input type="checkbox"/> no errors
	<ul style="list-style-type: none"> cavetto 	<input type="checkbox"/> no more than 3 errors	<input type="checkbox"/> no more than 2 errors	<input type="checkbox"/> no errors
	<ul style="list-style-type: none"> joggle 	<input type="checkbox"/>		
	<ul style="list-style-type: none"> fixing slot, drilled for dowel 	<input type="checkbox"/>		
	ensured internal mitre line clean and true	<input type="checkbox"/>		
	ensured external mitre lines clean and true	<input type="checkbox"/>		
	ensured return to stop square from face	<input type="checkbox"/>		
	ensured return break square from face	<input type="checkbox"/>		
	ensured face of ashlar stop square, clean and true	<input type="checkbox"/> no more than 3 errors	<input type="checkbox"/> no more than 2 errors	<input type="checkbox"/> no errors
	ensured mitre of ashlar stop square, clean and true	<input type="checkbox"/>		
2.10	produced chiselled finish to all visible surfaces	<input type="checkbox"/>		
2.4, 2.12, 2.13, 2.14	followed current environmental and relevant health and safety regulations	<input type="checkbox"/>		
	used tools, equipment and materials in a safe manner	<input type="checkbox"/>		
	used and maintained PPE as appropriate	<input type="checkbox"/>		
	maintained a clean and safe working area	<input type="checkbox"/>		
	cleaned and returned all tools and equipment once the task is complete.	<input type="checkbox"/>		

Task grading rules	Task grade:
To achieve a pass : <ul style="list-style-type: none"> • all pass criteria must be met. 	
To achieve a merit : <ul style="list-style-type: none"> • a minimum of 3/4 merit criteria must be met, and; • all the remaining criteria must be achieved to at least a pass standard, and; • candidates must not exceed the expected task time by more than 50%. 	
To achieve a distinction : <ul style="list-style-type: none"> • a minimum of 3/4 distinction criteria must be met, and; • the remaining graded criteria must be achieved to a merit standard, and; • all the non-graded criteria must be achieved to a pass standard, and; • candidates must not exceed the expected task time by more than 25%. 	
Assessor Name	
Assessor Signature	
Date	

Unit 135 Fixing stonemasonry components

Task 1 Set out and fix moulded plinth stone into surrounding masonry

Task coversheet

Expected time	14 hours
Task instructions	<p>In this task you will be required to:</p> <ul style="list-style-type: none"> • interpret information from documents • complete a method statement and risk assessment • complete a resource checklist • set out for fixing stonemasonry components • fix ashlar walling with moulded plinth and pilaster • fix coursed rubble panel • keep a clean work area • work safely at all times.
Diagrams	<p>Figure 2: Plan, front and side elevations, see page 23</p> <p>Figure 3: Isometric drawing, see page 24</p>

Observation checklist

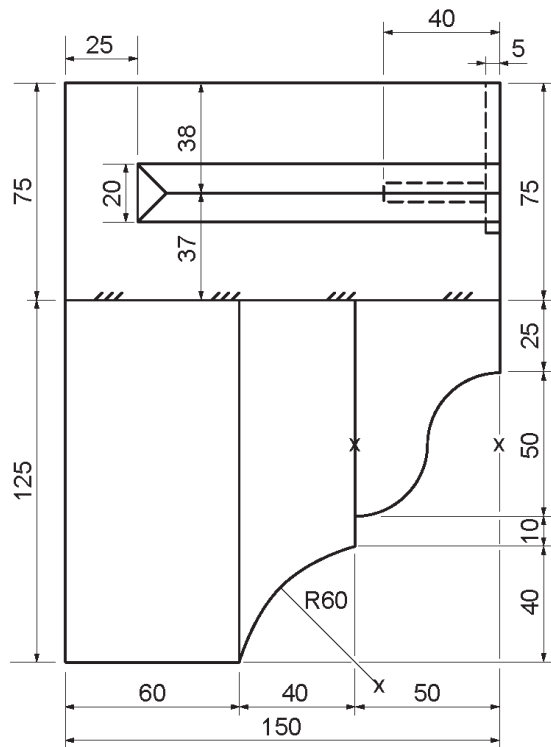
AC	The candidate has	Pass	Merit	Distinction
2.1, 4.1, 6.1, 6.2	interpreted drawings, specifications and manufacturer's documentation required for fixing stone on site, and confirmed understanding of the task	<input type="checkbox"/>		
2.2	completed a method statement for fixing stonemasonry components	<input type="checkbox"/>		
2.3	completed a risk assessment for fixing stonemasonry components	<input type="checkbox"/>		
2.4, 2.5, 4.2	completed a resource checklist	<input type="checkbox"/>		
4.6	checked backing wall for plumb, square and dimensional accuracy, and reported any discrepancies to the assessor	<input type="checkbox"/>		
4.3, 4.6	transferred datum to working area	<input type="checkbox"/> ± 3 mm	<input type="checkbox"/> ± 2 mm	<input type="checkbox"/> ± 1 mm
4.4, 4.6	established and set out to building line	<input type="checkbox"/> ± 3 mm	<input type="checkbox"/> ± 2 mm	<input type="checkbox"/> ± 1 mm
4.5, 4.6	set out a right angle corner	<input type="checkbox"/> ± 3 mm	<input type="checkbox"/> ± 2 mm	<input type="checkbox"/> ± 1 mm
6.2	gauged and mixed mortars for fixing ashlar, coursed rubble walling and stonemasonry components	<input type="checkbox"/>		

AC	The candidate has	Pass	Merit	Distinction
6.3, 6.4	fixed ashlar walling to incorporate moulded plinth and quoins:			
	<ul style="list-style-type: none"> to correct gauge 	<input type="checkbox"/> ± 3 mm	<input type="checkbox"/> ± 2 mm	<input type="checkbox"/> ± 1 mm
	<ul style="list-style-type: none"> to correct level 	<input type="checkbox"/> ± 3 mm	<input type="checkbox"/> ± 2 mm	<input type="checkbox"/> ± 1 mm
	<ul style="list-style-type: none"> to correct plumb at point A 	<input type="checkbox"/> ± 3 mm	<input type="checkbox"/> ± 2 mm	<input type="checkbox"/> ± 1 mm
	<ul style="list-style-type: none"> to correct plumb at point B 	<input type="checkbox"/> ± 3 mm	<input type="checkbox"/> ± 2 mm	<input type="checkbox"/> ± 1 mm
	<ul style="list-style-type: none"> to correct plumb at point C 	<input type="checkbox"/> ± 3 mm	<input type="checkbox"/> ± 2 mm	<input type="checkbox"/> ± 1 mm
	<ul style="list-style-type: none"> to correct plumb at point D 	<input type="checkbox"/> ± 3 mm	<input type="checkbox"/> ± 2 mm	<input type="checkbox"/> ± 1 mm
	<ul style="list-style-type: none"> to correct length 	<input type="checkbox"/> ± 3 mm	<input type="checkbox"/> ± 2 mm	<input type="checkbox"/> ± 1 mm
	<ul style="list-style-type: none"> using appropriate fixings 	<input type="checkbox"/>		
6.5	applied flush joint finishes to ashlar walling to industrial standards	<input type="checkbox"/>		
	ensured clean face finish to ashlar walling	<input type="checkbox"/>		
6.3	fixed coursed rubble walling with stepped ashlar:			
	<ul style="list-style-type: none"> to correct gauge 	<input type="checkbox"/> ± 6 mm	<input type="checkbox"/> ± 4 mm	<input type="checkbox"/> ± 2 mm
	<ul style="list-style-type: none"> to correct level 	<input type="checkbox"/> ± 6 mm	<input type="checkbox"/> ± 4 mm	<input type="checkbox"/> ± 2 mm
	<ul style="list-style-type: none"> to correct plumb at point E 	<input type="checkbox"/> ± 3 mm	<input type="checkbox"/> ± 2 mm	<input type="checkbox"/> ± 1 mm
	<ul style="list-style-type: none"> to correct plumb at point F 	<input type="checkbox"/> ± 3 mm	<input type="checkbox"/> ± 2 mm	<input type="checkbox"/> ± 1 mm
	<ul style="list-style-type: none"> to correct plumb at point G 	<input type="checkbox"/> ± 6 mm	<input type="checkbox"/> ± 4 mm	<input type="checkbox"/> ± 2 mm
6.5	applied brushed joint finishes to coursed rubble walling	<input type="checkbox"/>		
	ensured clean face finish to coursed rubble walling	<input type="checkbox"/>		
2.4, 2.6, 4.7, 6.6, 6.7, 6.8	followed current environmental and relevant health and safety regulations	<input type="checkbox"/>		
	used tools, equipment and materials in a safe manner	<input type="checkbox"/>		
	used and maintained PPE as appropriate	<input type="checkbox"/>		

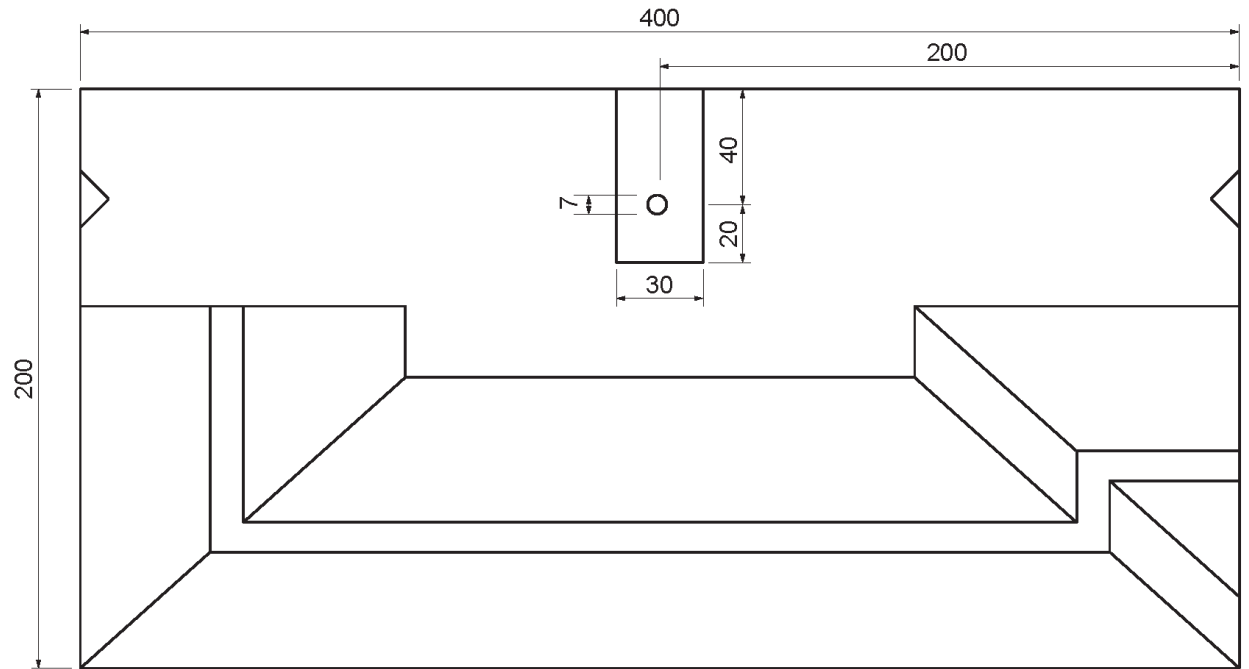
AC	The candidate has	Pass	Merit	Distinction
	maintained a clean and safe working area	<input type="checkbox"/>		
	cleaned and returned all tools and equipment once the task is complete.	<input type="checkbox"/>		

Task grading rules	Task grade:
<p>To achieve a pass:</p> <ul style="list-style-type: none"> • all pass criteria must be met. 	
<p>To achieve a merit:</p> <ul style="list-style-type: none"> • a minimum of 10/15 merit criteria must be met, and; • all the remaining criteria must be achieved to at least a pass standard, and; • candidates must not exceed the expected task time by more than 50%. 	
<p>To achieve a distinction:</p> <ul style="list-style-type: none"> • a minimum of 10/15 distinction criteria must be met, and; • the remaining graded criteria must be achieved to a merit standard, and; • all the non-graded criteria must be achieved to a pass standard, and; • candidates must not exceed the expected task time by more than 25%. 	
Assessor Name	
Assessor Signature	
Date	

Drawings and diagrams
Figure 1: Moulded plinth stone



END ELEVATION



PLAN DETAILS

NOT TO SCALE
 ALL MEASUREMENTS IN MILLIMETRES

Figure 2: Plan, front and side elevations

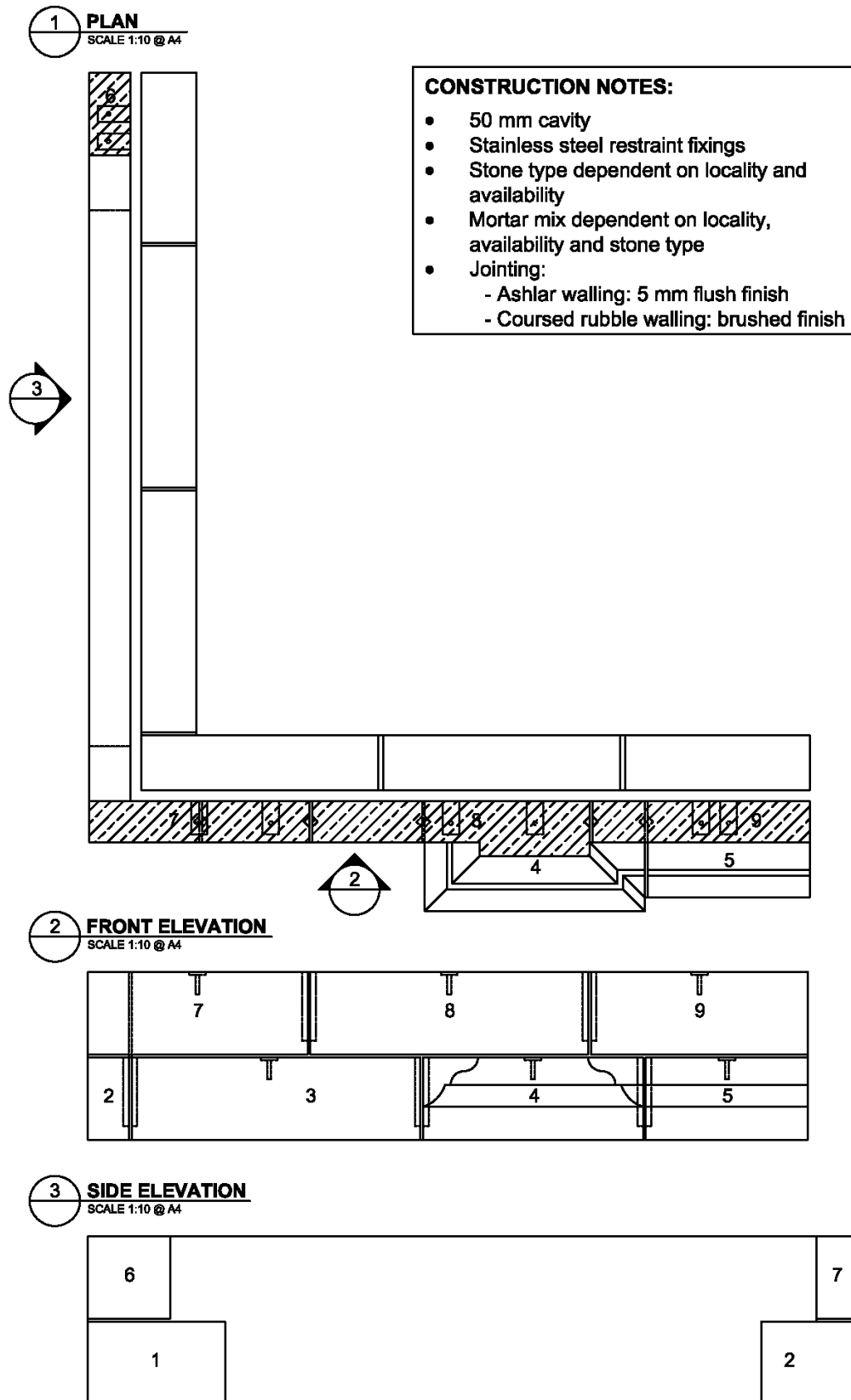
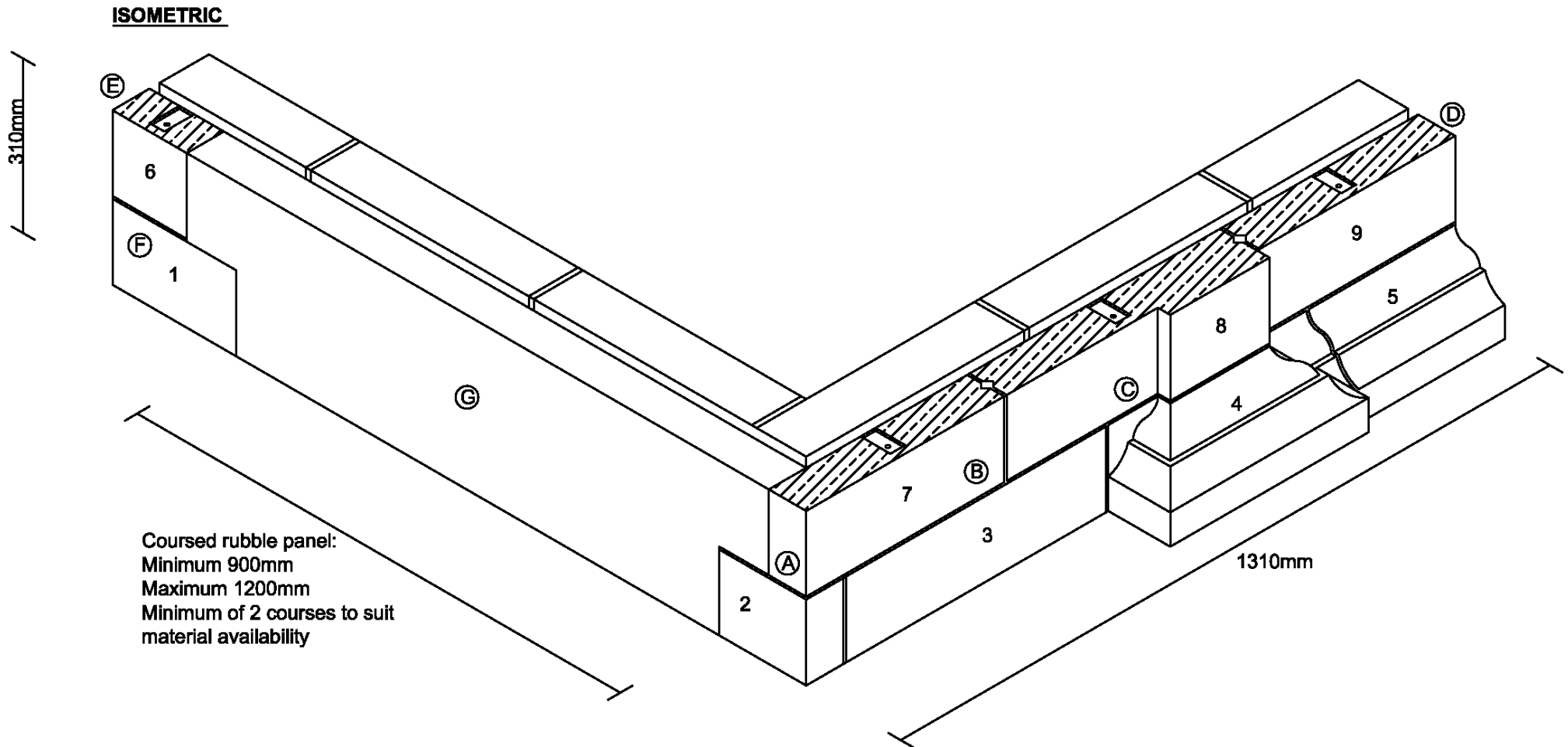


Figure 3: Isometric drawing



Published by City & Guilds
1 Giltspur Street
London
EC1A 9DD
T +44 (0)844 543 0000
F +44 (0)20 7294 2413
www.cityandguilds.com

**City & Guilds is a registered charity
established to promote education
and training**

About City & Guilds

As the UK's leading vocational education organisation, City & Guilds is leading the talent revolution by inspiring people to unlock their potential and develop their skills. We offer over 500 qualifications across 28 industries through 8500 centres worldwide and award around two million certificates every year. City & Guilds is recognised and respected by employers across the world as a sign of quality and exceptional training.

City & Guilds Group

The City & Guilds Group operates from three major hubs: London (servicing Europe, the Caribbean and Americas), Johannesburg (servicing Africa), and Singapore (servicing Asia, Australia and New Zealand). The Group also includes the Institute of Leadership & Management (management and leadership qualifications), City & Guilds Land Based Services (land-based qualifications), the Centre for Skills Development (CSD works to improve the policy and practice of vocational education and training worldwide) and Learning Assistant (an online e-portfolio).

Copyright

The content of this document is, unless otherwise indicated, © The City and Guilds of London Institute and may not be copied, reproduced or distributed without prior written consent. However, approved City & Guilds centres and candidates studying for City & Guilds qualifications may photocopy this document free of charge and/or include a PDF version of it on centre intranets on the following conditions:

- centre staff may copy the material only for the purpose of teaching candidates working towards a City & Guilds qualification, or for internal administration purposes
- candidates may copy the material only for their own use when working towards a City & Guilds qualification

The *Standard Copying Conditions* (see the City & Guilds website) also apply.

Published by City & Guilds, a registered charity established to promote education and training

Every effort has been made to ensure that the information contained in this publication is true and correct at the time of going to press. However, City & Guilds' products and services are subject to continuous development and improvement and the right is reserved to change products and services from time to time. City & Guilds cannot accept liability for loss or damage arising from the use of information in this publication.