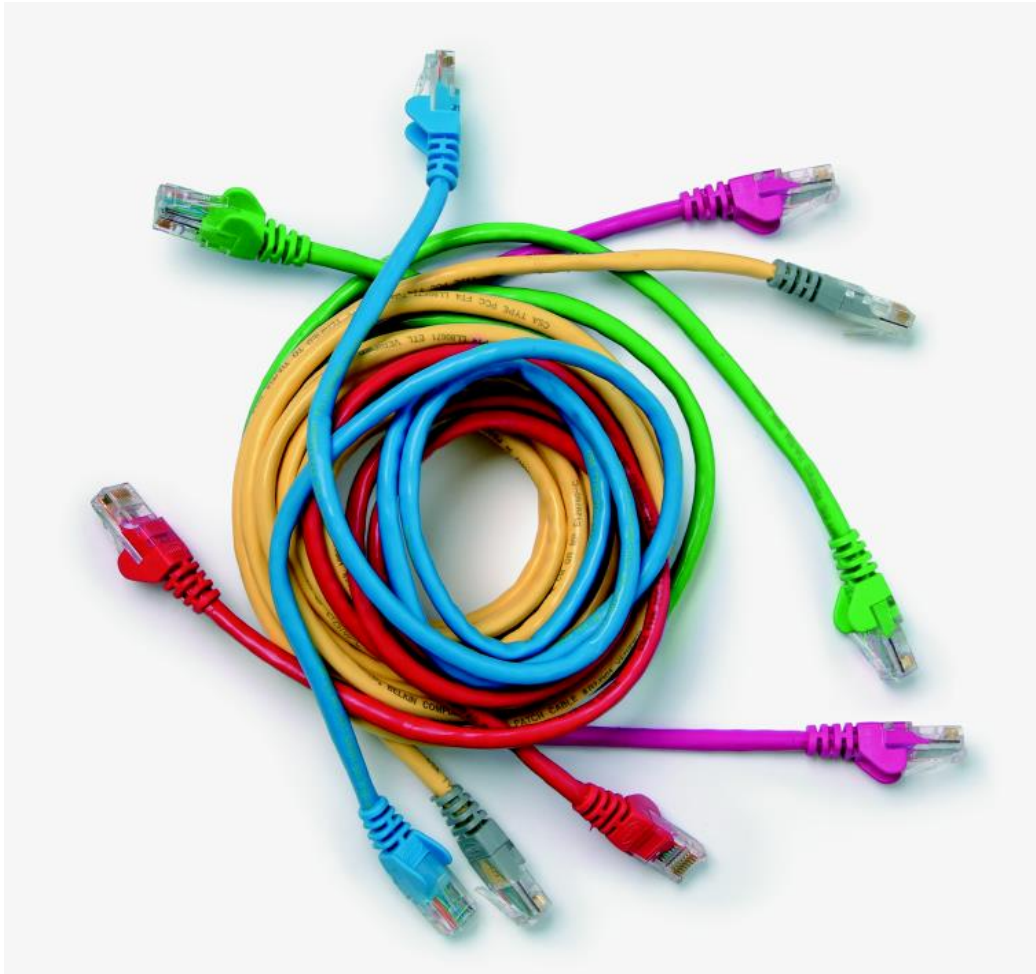


Level 3 Customer support provision for the IT professional (7540-030/7630-323)

Systems and Principles Assignment guide for Candidates Assignment A



About City & Guilds

City & Guilds is the UK's leading provider of vocational qualifications, offering over 500 awards across a wide range of industries, and progressing from entry level to the highest levels of professional achievement. With over 8500 centres in 100 countries, City & Guilds is recognised by employers worldwide for providing qualifications that offer proof of the skills they need to get the job done.

City & Guilds Group

The City & Guilds Group includes City & Guilds, ILM (the Institute of Leadership & Management) which provides management qualifications, learning materials and membership services, NPTC which offers land-based qualifications and membership services, and HAB (the Hospitality Awarding Body). City & Guilds also manages the Engineering Council Examinations on behalf of the Engineering Council.

Equal opportunities

City & Guilds fully supports the principle of equal opportunities and we are committed to satisfying this principle in all our activities and published material. A copy of our equal opportunities policy statement is available on the City & Guilds website.

Copyright

The content of this document is, unless otherwise indicated, © The City and Guilds of London Institute 2010 and may not be copied, reproduced or distributed without prior written consent.

However, approved City & Guilds centres and learners studying for City & Guilds qualifications may photocopy this document free of charge and/or include a locked PDF version of it on centre intranets on the following conditions:

- centre staff may copy the material only for the purpose of teaching learners working towards a City & Guilds qualification, or for internal administration purposes
- learners may copy the material only for their own use when working towards a City & Guilds qualification

The *Standard Copying Conditions* on the City & Guilds website also apply.

Please note: National Occupational Standards are not © The City and Guilds of London Institute. Please check the conditions upon which they may be copied with the relevant Sector Skills Council.

Publications

City & Guilds publications are available on the City & Guilds website or from our Publications Sales department at the address below or by telephoning +44 (0)20 7294 2850 or faxing +44 (0)20 7294 3387.

Every effort has been made to ensure that the information contained in this publication is true and correct at the time of going to press. However, City & Guilds' products and services are subject to continuous development and improvement and the right is reserved to change products and services from time to time. City & Guilds cannot accept liability for loss or damage arising from the use of information in this publication.

City & Guilds

1 Giltspur Street

London EC1A 9DD

T +44 (0)844 543 0000 (Centres)

T +44 (0)844 543 0033 (Learners)

F +44 (0)20 7294 2413

www.cityandguilds.com

learnersupport@cityandguilds.com

Contents

Level 3 Customer support provision for the IT professional (7540-030/7630-323)

Assignment A

Introduction – Information for Candidates	2
Candidate Instructions	3

Level 3 Customer support provision for the IT professional (7540-030/7630-323)

Assignment A

Introduction – Information for Candidates

About this document

This assignment comprises all of the assessment for Level 3 Customer support provision for the IT professional (7540-030/7630-323).

Health and safety

You are asked to consider the importance of safe working practices at all times.

You are responsible for maintaining the safety of others as well as your own. Anyone behaving in an unsafe fashion will be stopped and a suitable warning given. You will **not** be allowed to continue with an assignment if you compromise any of the Health and Safety requirements. This may seem rather strict but, apart from the potentially unpleasant consequences, you must acquire the habits required for the workplace.

Time allowance

The recommended time allowance for this assignment is **5 hours**.

Level 3 Customer support provision for the IT professional (7540-030/7630-323)

Candidate Instructions

Time allowance: 5 hours

Assignment set up:

This assignment is made up of **five** tasks:

- Task A – Obtain support information
- Task B – Assess customer feedback
- Task C – Interpret trends
- Task D – Provide remote technical support
- Task E – Provide written user instructions for non-technical customers and to recommend suitable training courses and coaching sessions

Scenario

You are employed by a company that provides a range of ICT support services. Customer requests for support are received at a customer call centre, based in a different geographic location to the customers that it supports.

Recently you have made site visits to customers and are concerned to hear that they are not satisfied with the service that they receive from your company.

You have been asked to review specific sections of the process for delivering support to your customers.

You should carry out the tasks as instructed. Forms should be completed and screen prints produced as indicated in the tasks. Questions should be answered on the answer sheet provided. Some tasks require you to produce your own documentation.

Task A – Obtain support information

- 1 Explain, in approximately 200 words, the reasons why customer service should be prompt and professional. Include **three** effects on the customer if it is not and **three** effects on the support organisation if it is not.
- 2 Describe **three** different ways of providing technical support, including at least **one** remote method (other than technical helpdesk).
- 3 Obtain a software update or patch as directed by your assessor. Save it onto a storage medium as instructed by your assessor. Rename the patch file to reflect what it is and what its use is.

- 4 Locate a hardware driver for a device as specified by your Assessor. Save it to disk.
- 5 Download an operator manual as directed by your Assessor. Save the document to a local drive or network location and check that you have the correct software to view the contents. Produce a screen print as evidence of the download.
- 6 On the ICT contact sheet provided, prepare a list of **five** telephone numbers for the customer support centres of major ICT support companies. Include **one** printer manufacturer, **one** software supplier, **one** ICT hardware supplier, **one** hardware maintenance company and **one** electronic component supplier.
- 7 You have been asked to investigate a technical problem. This fault has already been referred to your senior support specialist and you have to collect full information for them to evaluate.

Design a template that could be used to collect the information. The template should be divided into sections and headings to show that you have considered all types of relevant information. It must provide the support specialist with enough information to make a remote diagnosis.

Assume that the specialist will have no other information about the problem except that contained in the template.

Task B – Assess customer feedback

- 1 Support companies frequently survey their customers to establish their level of satisfaction. A popular method is a telephone survey.

There is a particular problem with the service being delivered by technical couriers in your company. Their role is to provide basic installation services for the replacement of peripherals.

Write **ten** questions that could be asked in a telephone survey of your customers. The survey will be undertaken by non-technical staff and should cover the complete life-cycle of the request for service.

The questions should collect the maximum information and be suitable for entering into an analysis sheet. You should use two or more styles of answer eg graded, yes/no.

You do not need to include the following in your questions: customer name, customer address, customer contact name and telephone number, call reference number.

Task C – Interpret trends

- 1 Briefly describe data filtering.
- 2 Look at the trend symptoms on the Trend Analysis Sheet provided by your assessor. In the spaces provided on the sheet, list **two** possible causes and **two** items of preventative action, for each trend.
- 3 Briefly describe trends that may occur in support requests.

Task D – Provide remote technical support

- 1 Remote support organisations often use specialist teams to respond to customer requests for service.

Design a simple flow chart, with question points, starting from the customer making their initial call and leading to a response by a specialist. The chart should be capable of being used to recommend the layout of an automatic telephone routing system in a call centre handling:

- hardware support
- software support
- installations
- upgrades.

The call centre supports a wide range of IT equipment, and there should be provision for a customer enquiry that does not fit in to the normal call flow. Check that a customer can ask for progress about an existing call without logging a new call.

- 2 You have listened to a customer call to the customer call centre and are concerned at the lack of structure to the diagnosis process. The customer has an ICT workstation that will not operate.

Use the diagnosis script sheet provided to write a short script that a call centre diagnosis engineer could use for this type of fault. Include suitable tests that could be carried out remotely.

The script will help the diagnosis engineer repeat the diagnosis steps in a logical order for each occasion that this type of fault is reported.

Task E – Provide written user instructions for non-technical customers and to recommend suitable training courses and coaching sessions

1 Write **three** short explanations to enclose with disks that are being sent to non-technical customers on each of the following:

- installing a new driver
- booting from an emergency boot disk
- loading and running a diagnostic disk.

The instructions must enable the customers to carry out the required actions and should explain the purpose of the operations.

2 The profile of a call centre diagnosis engineer is that they only have product training and customer on-site experience. You have been asked to recommend a coaching plan.

Prepare a short report to recommend suitable training courses and coaching sessions. Include the following in your report:

- identify **three** types of call centre customer and their respective knowledge requirements
- methods to assess current call centre diagnosis engineer skills
- **three** potential coaching subjects
- ways to evaluate the effectiveness of the coaching
- why this evaluation is important
- a list of different coaching methods to satisfy a range of learning styles.

The report should have sufficient information for the call centre manager to use as a development plan. It should therefore prioritise the coaching requirements.

When you have finished working:

- Sign each document above your name and label all removable storage media with your name.
- Hand all paperwork and removable storage media to your assessor.

If the assignment is taken over more than one period, all paperwork and removable media must be returned to the test supervisor at the end of each sitting.

End of assignment

Published by City & Guilds

1 Giltspur Street

London

EC1A 9DD

T +44 (0)844 543 0000 (Centres)

T +44 (0)844 543 0033 (Learners)

F +44 (0)20 7294 2413

www.cityandguilds.com

**City & Guilds is a registered charity
established to promote education
and training**