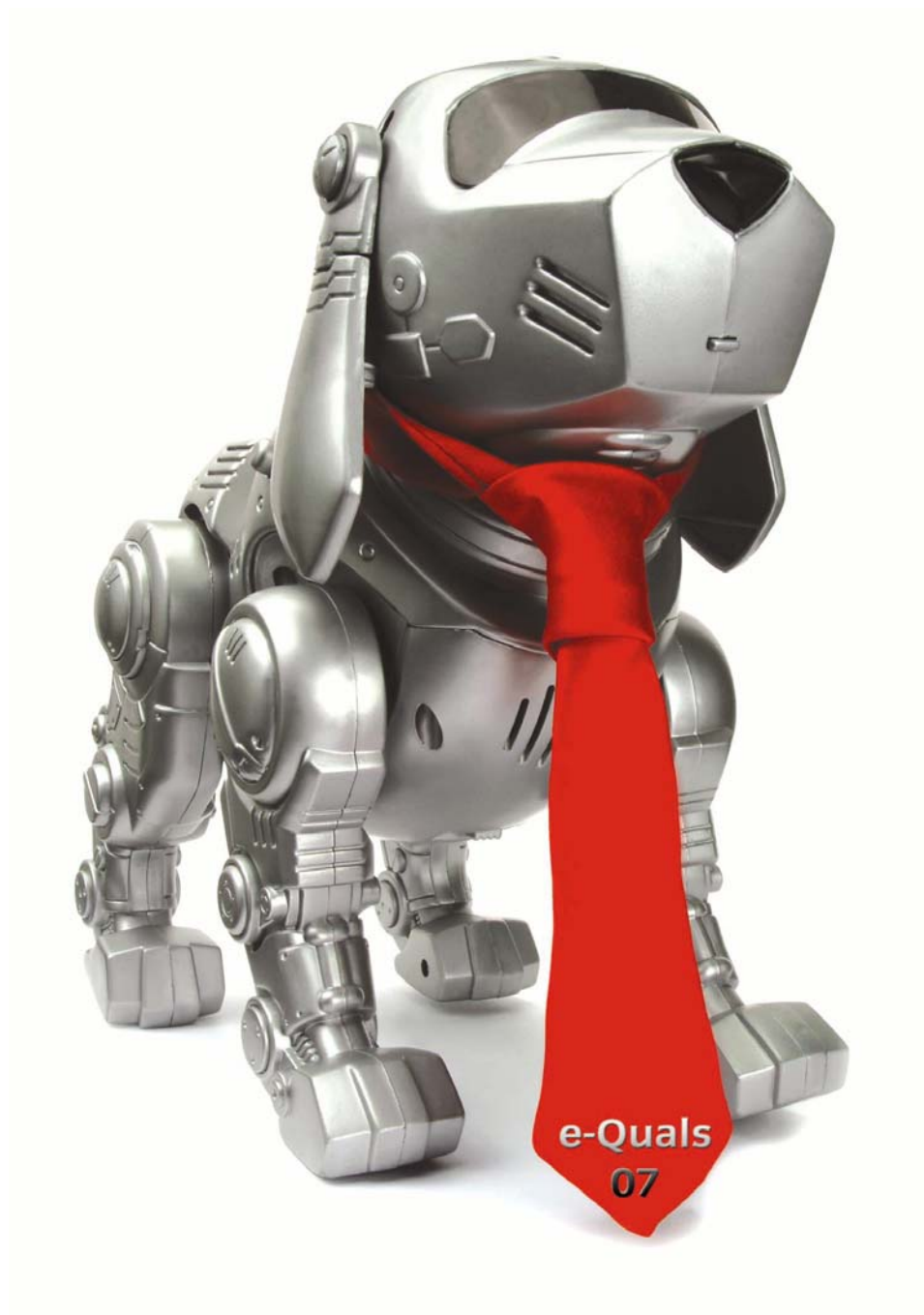


Level 3 Electronic Principles (7267-523)

e-Quals
Assignment guide for Candidates
Assignment A



About City & Guilds

City & Guilds is the UK's leading provider of vocational qualifications, offering over 500 awards across a wide range of industries, and progressing from entry level to the highest levels of professional achievement. With over 8500 centres in 100 countries, City & Guilds is recognised by employers worldwide for providing qualifications that offer proof of the skills they need to get the job done.

City & Guilds Group

The City & Guilds Group includes City & Guilds, ILM (the Institute of Leadership & Management) which provides management qualifications, learning materials and membership services, NPTC which offers land-based qualifications and membership services, and HAB (the Hospitality Awarding Body). City & Guilds also manages the Engineering Council Examinations on behalf of the Engineering Council.

Equal opportunities

City & Guilds fully supports the principle of equal opportunities and we are committed to satisfying this principle in all our activities and published material. A copy of our equal opportunities policy statement is available on the City & Guilds website.

Copyright

The content of this document is, unless otherwise indicated, © The City and Guilds of London Institute 2010 and may not be copied, reproduced or distributed without prior written consent.

However, approved City & Guilds centres and learners studying for City & Guilds qualifications may photocopy this document free of charge and/or include a locked PDF version of it on centre intranets on the following conditions:

- centre staff may copy the material only for the purpose of teaching learners working towards a City & Guilds qualification, or for internal administration purposes
- learners may copy the material only for their own use when working towards a City & Guilds qualification

The *Standard Copying Conditions* on the City & Guilds website also apply.

Please note: National Occupational Standards are not © The City and Guilds of London Institute. Please check the conditions upon which they may be copied with the relevant Sector Skills Council.

Publications

City & Guilds publications are available on the City & Guilds website or from our Publications Sales department at the address below or by telephoning +44 (0)20 7294 2850 or faxing +44 (0)20 7294 3387.

Every effort has been made to ensure that the information contained in this publication is true and correct at the time of going to press. However, City & Guilds' products and services are subject to continuous development and improvement and the right is reserved to change products and services from time to time. City & Guilds cannot accept liability for loss or damage arising from the use of information in this publication.

City & Guilds

1 Giltspur Street

London EC1A 9DD

T +44 (0)20 7294 2800

F +44 (0)20 7294 2400

www.cityandguilds.com

learnersupport@cityandguilds.com

Contents

Level 3 Electronic Principles (7267-523)

Introduction – Information for Candidates	2
Candidate instructions	3

Level 3 Electronic Principles (7267-523) Assignment A

Introduction – Information for Candidates

About this document

This assignment comprises all of the assessment for Level 3 Electronic Principles (7267-523).

Health and safety

You are asked to consider the importance of safe working practices at all times.

You are responsible for maintaining the safety of others as well as your own. Anyone behaving in an unsafe fashion will be stopped and a suitable warning given. You will **not** be allowed to continue with an assignment if you compromise any of the Health and Safety requirements. This may seem rather strict but, apart from the potentially unpleasant consequences, you must acquire the habits required for the workplace.

Time allowance

The recommended time allowance for this assignment is **3 hours**.

Level 3 Electronic Principles (7267-523)

Candidate instructions

Time allowance: 3 hours

Assignment set up:

This assignment is made up of **three** tasks

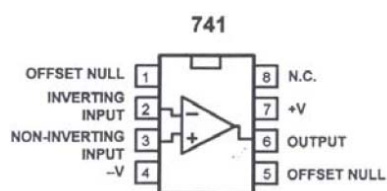
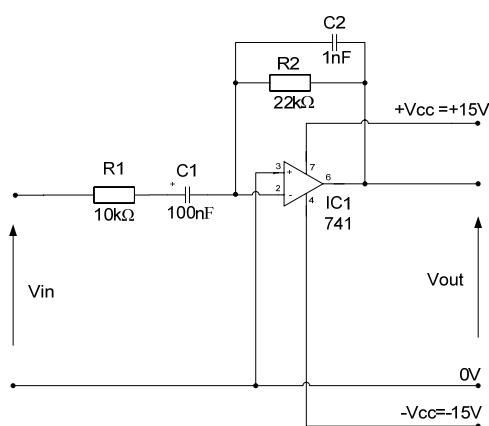
- Task A – Filter frequency response plot
- Task B – Component fault identification
- Task C – Multiple-choice questions

Task A – Filter frequency response plot

You will be provided with a:

- prototype board (breadboard), components and leads
- low voltage power supply, +/- 15V d.c.
- double beam oscilloscope
- low frequency (a.f.) sinusoidal signal generator.

1 Using the components and prototype board provided, construct the circuit shown below.



- 2 Apply a 1kHz, 1V peak-to-peak sinewave to the input of the circuit and then sketch **two** cycles of the input and output waveforms on graph paper or other suitable media. These should be time related with scaled axes.
- 3 State the phase relationship between the input and output voltages and state the voltage gain of the circuit.

- 4 Measure (and record in a table) the output voltage and gain of the circuit at each of the following frequencies. Keep the input, V_{in} at 1V peak-to-peak in each case:
- 50Hz
 - 100Hz
 - 200Hz
 - 400Hz
 - 700Hz
 - 1kHz
 - 2kHz
 - 4kHz
 - 7kHz
 - 10kHz.
- 5 On linear/log graph paper, plot the gain (A_v) on the linear y-axis against frequency on the logarithmic x-axis.
- 6 Indicate, on the graph, the -3dB points.
- 7 State the value of F_l (the lower frequency – 3dB point) and F_u (the upper frequency – 3dB point). Calculate the “bandwidth” of the filter ($F_u - F_l$).
- 8 Calculate the values and show your working of F_u and F_l given that:

F_l is the frequency where $X_{C1} = R_1$

F_u is the frequency where $X_{C2} = R_2$

$$\text{and } X_c = \frac{1}{2\pi fc}$$

Task B – Component fault identification

You will be provided with:

- a selection of eight semiconductor devices, each clearly marked with its type number and an identification number
- appropriate test equipment
- access to semiconductor data.

1 Using suitable reference data, for each semiconductor, identify each of the following and record the information on the semiconductor test log:

- The device type (eg SCR, BJT, FET, triac).
- The maximum power rating.
- The case type.

2 Using the test equipment, carry out resistance measurements and any other suitable tests to determine whether the device is in working order or unserviceable. Record the results on the semiconductor test log.

Task C – Multiple-choice questions

Your assessor will now give you a multiple-choice answer sheet containing **six** multiple-choice questions. Answer **all** of the questions and hand your answer sheet back to your assessor.

When you have finished working:

- Sign each document above your name and label all removable storage media with your name.
- Hand all paperwork and removable storage media to your assessor.

If the assignment is taken over more than one period, all paperwork and removable media must be returned to the test supervisor at the end of each sitting.

End of assignment

**Published by City & Guilds
1 Giltspur Street
London
EC1A 9DD
T +44 (0)20 7294 2468
F +44 (0)20 7294 2400
www.cityandguilds.com**

**City & Guilds is a registered charity
established to promote education
and training**