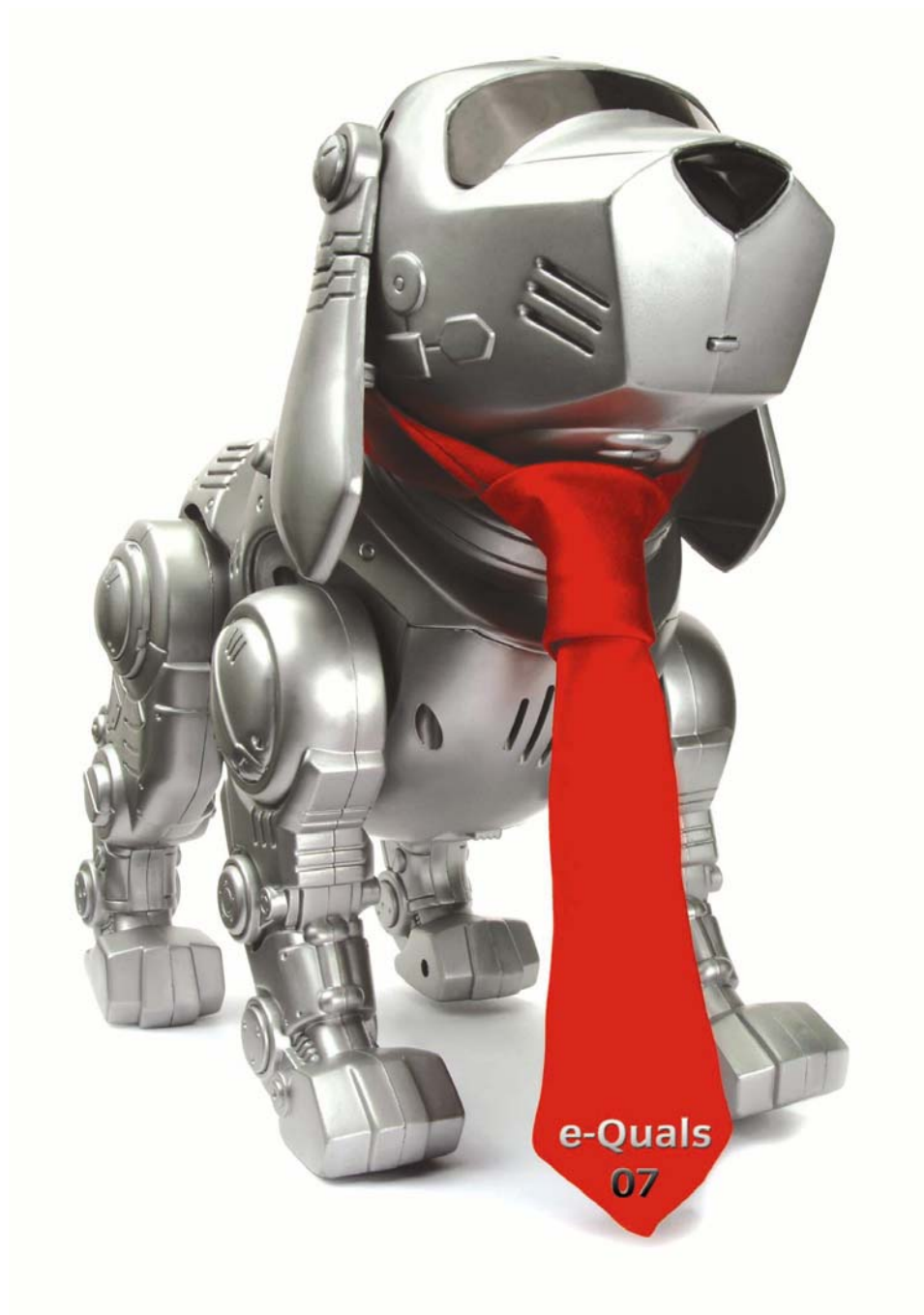


Level 3 Test and Measurement (7267-524)

e-Quals
Assignment guide for Candidates
Assignment A



About City & Guilds

City & Guilds is the UK's leading provider of vocational qualifications, offering over 500 awards across a wide range of industries, and progressing from entry level to the highest levels of professional achievement. With over 8500 centres in 100 countries, City & Guilds is recognised by employers worldwide for providing qualifications that offer proof of the skills they need to get the job done.

City & Guilds Group

The City & Guilds Group includes City & Guilds, ILM (the Institute of Leadership & Management) which provides management qualifications, learning materials and membership services, NPTC which offers land-based qualifications and membership services, and HAB (the Hospitality Awarding Body). City & Guilds also manages the Engineering Council Examinations on behalf of the Engineering Council.

Equal opportunities

City & Guilds fully supports the principle of equal opportunities and we are committed to satisfying this principle in all our activities and published material. A copy of our equal opportunities policy statement is available on the City & Guilds website.

Copyright

The content of this document is, unless otherwise indicated, © The City and Guilds of London Institute 2010 and may not be copied, reproduced or distributed without prior written consent.

However, approved City & Guilds centres and learners studying for City & Guilds qualifications may photocopy this document free of charge and/or include a locked PDF version of it on centre intranets on the following conditions:

- centre staff may copy the material only for the purpose of teaching learners working towards a City & Guilds qualification, or for internal administration purposes
- learners may copy the material only for their own use when working towards a City & Guilds qualification

The *Standard Copying Conditions* on the City & Guilds website also apply.

Please note: National Occupational Standards are not © The City and Guilds of London Institute. Please check the conditions upon which they may be copied with the relevant Sector Skills Council.

Publications

City & Guilds publications are available on the City & Guilds website or from our Publications Sales department at the address below or by telephoning +44 (0)20 7294 2850 or faxing +44 (0)20 7294 3387.

Every effort has been made to ensure that the information contained in this publication is true and correct at the time of going to press. However, City & Guilds' products and services are subject to continuous development and improvement and the right is reserved to change products and services from time to time. City & Guilds cannot accept liability for loss or damage arising from the use of information in this publication.

City & Guilds

1 Giltspur Street

London EC1A 9DD

T +44 (0)20 7294 2800

F +44 (0)20 7294 2400

www.cityandguilds.com

learnersupport@cityandguilds.com

Contents

Level 3 Test and Measurement (7267-524)

Introduction – Information for Candidates	2
Candidate instructions	3

Level 3 Test and Measurement (7267-524) Assignment A

Introduction – Information for Candidates

About this document

This assignment comprises all of the assessment for Level 3 Test and Measurement (7267-524).

Health and safety

You are asked to consider the importance of safe working practices at all times.

You are responsible for maintaining the safety of others as well as your own. Anyone behaving in an unsafe fashion will be stopped and a suitable warning given. You will **not** be allowed to continue with an assignment if you compromise any of the Health and Safety requirements. This may seem rather strict but, apart from the potentially unpleasant consequences, you must acquire the habits required for the workplace.

Time allowance

The recommended time allowance for this assignment is **3 hours**.

Level 3 Test and Measurement (7267-524)

Candidate instructions

Time allowance: 3 hours

Assignment set up:

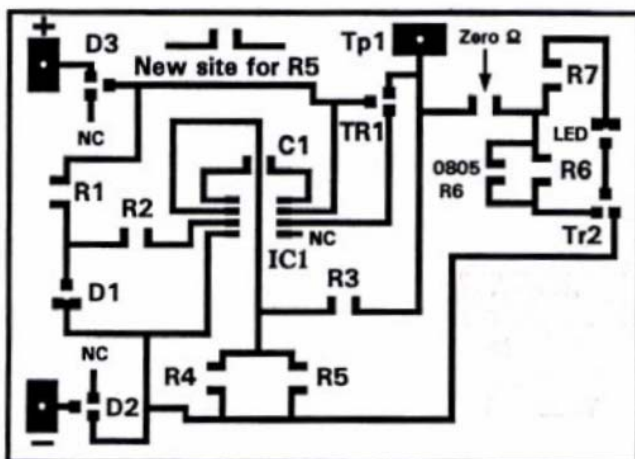
This assignment is made up of **four** tasks

- Task A – SMT component recognition and testing
- Task B – SMT measurements and board rework
- Task C – Basic electrical safety testing
- Task D – Multiple-choice questions

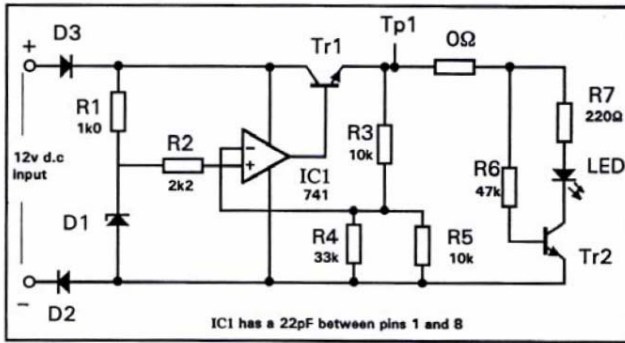
Task A – SMT component recognition and testing

You will be provided with a:

- surface mount board on which a number of components are mounted (diagrams shown below)
- some additional components
- digital test meter
- access to component reference data.



Warning:
This diagram is **not** drawn to scale.



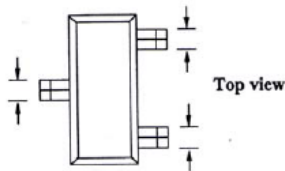
1 State the case type **and** device type for each of the following components on the supplied board:

- D1
- D2
- Tr1

2 Identify the 100nF capacitor from the additional components provided, and secure it to your answer sheet using tape.

3 With reference to the integrated circuit on the supplied board, state how the correct pin orientation is identified.

4 Below is shown the SO23 case outline for the red LED used on the board. Sketch this on your answer sheet and correctly label the terminals.



Task B – SMT measurements and board rework

You will be provided with a:

- surface mount board with mounted components
- hand tools and test equipment to carry out the tasks listed
- additional components:

Component	Value	Package code
Replacement resistor for R6	47k	0805
Print jumper (0Ω link)	0Ω	1206
Capacitor	22pF	0805
Capacitor	22pF	1206
Capacitor *	100nF	1206
Vero pins x 3	none	none

* This component will have been selected and removed in Task A.

- 1 List the tools and test equipment required to carry out Tasks B2 to B12.
- 2 Solder vero pins to each of the following points on the surface mount board:
 - +
 - –
 - TP1.
- 3 Connect the circuit to a 12V d.c. supply. Measure and record the voltage at Tp1 with respect to the negative supply terminal. Disconnect the 12V supply.
- 4 De-solder R5 from the board and extract any surplus solder from the pads, leaving them ready to accept a new component if required.
- 5 Re-solder R5 in the position marked 'New site for R5'.
- 6 Measure and record the resistance between the copper strips of the new site for R5.
- 7 Reconnect the supply, measure and record the voltage at Tp1. Disconnect the supply.
- 8 Solder the 0R print jumper (0Ω link) in the indicated position.
- 9 Reconnect the supply and check that the LED is lit, then take necessary measurements and calculate the current flowing through the LED. Show all your working. Disconnect the supply.
- 10 De-solder and remove R6.

- 11 Replace R6 with the additional resistor of the same value but different package coding (0805). The new resistor must be soldered onto the adjacent smaller pad.
- 12 Reconnect the supply, take necessary measurements and calculate the power dissipated by the new R6. Show your working. Disconnect the supply.
- 13 State with reasons whether the new R6 is a suitable replacement resistor.

Task C – Basic electrical safety testing

You will be provided with **two** portable appliances which you must test with regard to mains safety with the necessary test equipment.

- 1 The following symbol is shown on a portable electrical appliance. State the meaning of the symbol and how protection is achieved against electric shock.



- 2 Using appropriate test equipment, carry out safety tests on **two** portable appliances and complete a report form for each.

Task D – Multiple-choice questions

Your assessor will now give you a multiple-choice answer sheet containing **10** multiple-choice questions. Answer **all** of the questions and hand your answer sheet back to your assessor.

When you have finished working:

- Sign each document above your name and label all removable storage media with your name.
- Hand all paperwork and removable storage media to your assessor.

If the assignment is taken over more than one period, all paperwork and removable media must be returned to the test supervisor at the end of each sitting.

End of assignment

**Published by City & Guilds
1 Giltspur Street
London
EC1A 9DD
T +44 (0)20 7294 2468
F +44 (0)20 7294 2400
www.cityandguilds.com**

**City & Guilds is a registered charity
established to promote education
and training**