



0172-526 JUNE 2019

Level 2 Technical Certificate in Equine Care

Level 2 Equine Care – Theory Exam (1)

Friday 21 June 2019
09:30 – 11:30

You should have the following for this examination

- a multiple-choice answer sheet
- a pen with black or blue ink

This question paper is the property of the City and Guilds of London Institute and is to be returned after the examination.

Read the following notes before you answer any questions

- You **must** use a pen with black or blue ink to complete **all** parts of the answer sheet.
- Check that you have the correct answer sheet for the examination.
- Check that your name and candidate details are printed correctly at the top of your answer sheet.
- Inform the invigilator if your name or examination details are not correct.
- Each question shows **four** possible answers (lettered 'a', 'b', 'c' and 'd'); only **one** is correct.
- Decide which **one** is correct and mark your answer on the **answer sheet** with your pen.

For example if you decide 'a' is correct, mark your answer like this

101	<input checked="" type="radio"/>	<input type="radio"/> (b)	<input type="radio"/> (c)	<input type="radio"/> (d)
	Cancel	Cancel	Cancel	Cancel

If you want to change your answer, cancel your first choice by filling in the 'cancel' box below the circle like this

101	<input checked="" type="radio"/>	<input type="radio"/> (b)	<input type="radio"/> (c)	<input type="radio"/> (d)
	Cancel	Cancel	Cancel	

Then mark the answer which you have now decided is correct. For example if you now decide 'c' is correct, mark your answer like this

101	<input checked="" type="radio"/>	<input type="radio"/> (b)	<input checked="" type="radio"/>	<input type="radio"/> (d)
	Cancel	Cancel	Cancel	

Any other marks on the form may invalidate some of your answers.

- Any calculations or rough working can be done on the question paper.
- Attempt all questions. If you find a question difficult, leave it and return to it later.

This paper contains 50 questions. Answer them using the 'boxes' numbered 1 to 50 on the answer sheet.

- 1 What is the normal appearance of a healthy hoof?
 - a Smooth hoof wall, growing in a straight line.
 - b Growth rings on hoof wall, growing in a straight line.
 - c Growth rings on hoof wall, growing at an angle.
 - d Ridged hoof wall, growing at an angle.

- 2 Which of the following is the normal resting pulse rate range for an adult horse?
 - a 6 – 18 bpm
 - b 12 – 20 bpm
 - c 28 – 44 bpm
 - d 45 – 54 bpm

- 3 Which of the following pieces of legislation relates to horses that are abandoned on private land?
 - a Control of Horses Act 2015.
 - b The Veterinary Surgeons Act 1966.
 - c Horse Passports Regulations 2009.
 - d Riding Establishment Act 1964 and 1970.

- 4 What causes Equine Influenza in horses?
 - a Parasites.
 - b Bacteria.
 - c Virus.
 - d Fungus.

- 5 Which of the following is a sign of good health in horses?
 - a Coat lying flat with a shine.
 - b Heat in the hock joint.
 - c Temperature of 39.5 degrees Celsius.
 - d Resting a front foot in the stable.

- 6 On which part of a horse's body is sweet itch commonly found?
 - a Mane.
 - b Fetlock.
 - c Flank.
 - d Hock.

7 **Statement 1**
Parasites derive their nutrients from the host animal.

Statement 2
Arthritis is an example of a parasitic infection.

Which of the following options is correct for **both** statements?

	Statement 1	Statement 2
a	False	False
b	True	True
c	False	True
d	True	False

- 8 Which of the following is a disorder that can be commonly seen in obese horses?
 - a Sweet itch.
 - b Mud fever.
 - c Laminitis.
 - d Mange.

- 9 Which of the following is classed as a behavioural disorder?
 - a Box walking.
 - b Bucking.
 - c Shying.
 - d Rolling.

- 10 Which of the following is a welfare need?
 - a Need for insurance.
 - b Need for a suitable diet.
 - c Need for 24 hour stabling.
 - d Need for a vet subscription.

- 11 For which of the following health problems would a topical treatment be used?
 - a Equine Influenza.
 - b Equine Metabolic Syndrome.
 - c Colic.
 - d Ringworm.

- 12 Which of the following would be an acceptable reason to euthanise a horse on welfare grounds?
- a A horse with a fractured pelvic bone.
 - b A horse with chronic sweet itch.
 - c A horse that has colic due to worm burden.
 - d A horse diagnosed with Cushing's Syndrome.

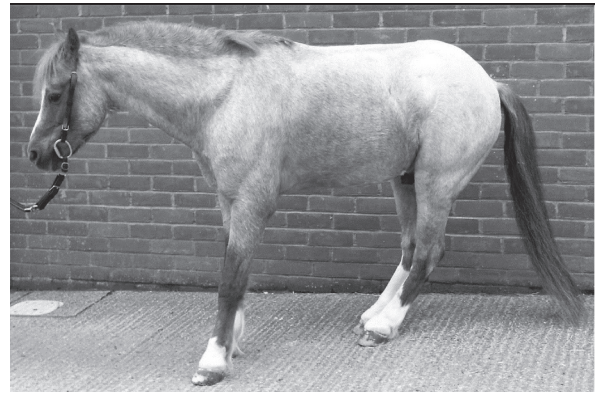
- 13 Which of the following is the **most** suitable method to improve the welfare of a horse that weaves?

- a Isolation of the horse in a separate barn.
- b Providing environmental enrichment.
- c Reducing the amount of forage in the stable.
- d Changing the bedding from straw to shavings.

- 14 An 8-year-old Sport horse, who is competing in high level show jumping competitions, is presenting with the following symptoms: a lack of enthusiasm, stiffness of the limbs, swelling of the front fetlocks and lameness.

Which of the following is the **most** likely health problem the horse is suffering from?

- a Cushing's Syndrome.
- b Laminitis.
- c Equine Metabolic Syndrome.
- d Degenerative Joint Disease.



Source: www.horseandrideruk.com

Figure 1

- 15 The pony in Figure 1 has come in from the field and is presenting with the health problem shown. What would be the immediate course of action?
- a Isolate the horse to prevent spread of infection.
 - b Keep the horse walking and call the farrier.
 - c Stable the horse with a deep bed and call the vet.
 - d Return the horse to the field and monitor the issue.
- 16 A horse has injured its knee in the field and is bleeding. Which of the following first aid items would be used in this emergency situation?
- a Thermometer.
 - b Sterile dressing.
 - c Sponge.
 - d Stethoscope.
- 17 Which of the following management techniques will aid in preventing colic in a horse that is prone to this condition?
- a Ration availability of lush spring grass and increase access slowly.
 - b Provide a large concentrate meal once a day from the floor.
 - c Ensure the horse is rugged appropriately in the winter.
 - d Keep influenza vaccinations up to date to reduce stress.
- 18 Which of the following is a responsibility of all employees on a yard?
- a To organise horse schooling rotas.
 - b To improve employee satisfaction.
 - c To order all of the first aid equipment.
 - d To maintain a safe working environment.

- 19 Which of the following is the **most** likely reason a yard will provide on the job training for its employees?
- a To improve staff punctuality and attendance.
 - b To ensure the minimum wage is paid.
 - c To improve staff performance at work.
 - d To reduce the need for personal protective equipment.

- 20 Which of the following factors is used to determine the rate of pay for an employee who earns the minimum wage when working on a yard?
- a Age.
 - b Riding experience.
 - c Gender.
 - d Working efficiency.

- 21 A new member of staff has started working part-time on a livery yard as a stable groom. Which of the following are employment rights of the new member of the team?
- a Contract of payment, annual bonuses, paid holiday.
 - b Rest periods, contract of payment, on the job training.
 - c On the job training, paid lunch breaks, travel expenses.
 - d Paid sick leave, rest periods, free stabling for a horse.

22 **Statement 1**
Punctuality of staff is the responsibility of the junior groom.

Statement 2
Broken equipment should be reported to the yard manager and not used.

Which of the following options is correct for **both** statements?

	Statement 1	Statement 2
a	False	False
b	True	True
c	False	True
d	True	False

- 23 Which of the following is the **most** important reason to carry out regular maintenance on the yard?
- a To ensure facilities remain in a safe condition.
 - b To ensure the staff are happy whilst working.
 - c To ensure the horses do not undertake stereotypic behaviours.
 - d To ensure customers do not complain to the yard owner.



Source: www.shop.sabreleather.co.uk

Figure 2

- 24 What type of noseband is shown in Figure 2?
- a Cavesson.
 - b Drop.
 - c Grackle.
 - d Flash.
- 25 Which one of the following tack items is used to control a horse's head height?
- a Breastplate.
 - b Girth.
 - c Martingale.
 - d Numnah.



Source: www.caribuhorsewear.com.au

Figure 3



Source: www.baileyshorsefeeds.co.uk

Figure 4

26 What type of rug is shown in Figure 3?

- a Turnout.
- b Exercise.
- c Stable.
- d Hood.

27 Which boots are commonly worn on the front legs of show jumping horses to protect the back of the legs?

- a Overreach.
- b Tendon.
- c Fetlock.
- d Sausage.

28 Which of the following water sources is the **best** for monitoring how much water a horse is drinking?

- a Stream.
- b Automatic waterer.
- c Buckets.
- d Pond.

29 Which of the following is the **most** important component of a horse's diet?

- a Hay.
- b Oats.
- c Balancer.
- d Course mix.

30 Identify the foodstuff in Figure 4.

- a Stud mix.
- b Micronized barley.
- c Rolled oats.
- d Pony nuts.

31 **Statement 1**

Increased workload will increase the horse's need for energy.

Statement 2

Water consumption increases in cold weather conditions.

Which of the following options is correct for **both** statements?

	Statement 1	Statement 2
a	True	True
b	True	False
c	False	False
d	False	True

32 What are the **main** benefits of ensuring horses have the right forage to concentrate ratio in their diets?

- a It saves money on feed bills for the yard and promotes a healthy digestive system.
- b It stops horses from vomiting and wasting feed and saves money on feed bills for the yard.
- c It promotes a healthy digestive system and reduces the potential for colic and laminitis.
- d It reduces the potential for colic and laminitis and stops horses from vomiting and wasting feed.

33 A new horse on a yard is having its feed changed from hay to haylage and from no concentrate feed to competition mix. Which of the rules of feeding is the **most** beneficial in this situation?

- a Change horse diets gradually.
- b Ensure the feed room is swept daily.
- c Feed a succulent daily.
- d Feed one hour after exercise.



<https://www.teammanhattanequestrian.co.uk/>

Figure 5

34 What schooling method is shown in Figure 5?

- a Long-reining.
- b Lungeing.
- c Loose schooling.
- d Horse walker.

35 Which of the following injuries would **most** likely require a horse to be lunged rather than ridden?

- a Girth gall.
- b Tendon injury.
- c Splint.
- d Ligament damage.

36 Which of the following would be the **most** beneficial form of exercise to observe a horse's movement in all three paces?

- a Horse walker.
- b Lungeing.
- c In hand.
- d Hacking on road.

37 A three-year-old horse is very sharp and has a tendency to buck when first ridden. Why would it be beneficial to lunge the horse before the rider mounts?

- a It will help to reduce excess energy.
- b It will get the horse used to the rider from the start.
- c It will help the rider to become fitter.
- d It will improve the rider's leg aids.

38 Which of the following are reasons for long-reining horses on the flat?

- a It improves jumping technique and teaches the horse rein aids.
- b It teaches the horse to go forward and increases the likelihood of stereotypies.
- c It teaches the horse to go forward and teaches the horse rein aids.
- d It improves jumping technique and increases the likelihood of stereotypies.

39 A horse is being long-reined to break to drive and has a tendency to back the trainer into corners. Which of the following would be the safest place to long-rein this horse?

- a In the stable.
- b Indoor school.
- c Outdoor school.
- d In a field.

To answer questions 40, 41, 42 and 43 you must refer to Scenario 1.

Scenario 1

Billy is a new staff member on a yard in his second week of employment. He is responsible for the care of Mavis, a 21-year-old riding school horse, who is going to be ridden in a low level jumping lesson. Mavis can be stiff in the morning when she is first brought out of the stable but loosens up if she walks for ten minutes before her lesson. When Mavis is loosened up she gets excited and can strike into the back of her front leg, injuring her heel area and pulling off the shoe.

During the winter, Mavis struggles more with her stiffness. Billy is given the responsibility of working out the best management regime to enable Mavis to continue working in the school and maximise her welfare.

The riding school is very busy and on one Saturday Billy works continuously for eight and a half hours from 7 o'clock in the morning.

40 Billy has been asked to collect Mavis' tack for her lesson. Which of the following would be the **most** appropriate saddle and boot combination?

a



Source: www.chevalier.co.nz/



Source: www.horsetyle.co.uk/

b



Source: www.premierequine.co.uk



Source: www.pinterest.com/134545107590740660/

c



Source: www.chevalier.co.nz/



Source: www.pinterest.com/134545107590740660/

d



Source: www.premierequine.co.uk



Source: www.horsetyle.co.uk/

- 41 Which one of the following methods of exercise would be the **most** suitable to use before Mavis' lesson?
- Put in the field.
 - Pole work in the school.
 - Lungeing.
 - Horse walker.
- 42 Which of the following husbandry regimes would be the **most** beneficial to maximise Mavis' welfare during the winter months?
- Increased turn out, regular gentle exercise and feed joint supplement.
 - Box rest, no exercise and low calorie feed with a vitamin E supplement.
 - Stabled, lunge daily and feed low fibre diet with garlic supplement.
 - Reduced turn out, ridden once a week and feed probiotic supplement.
- 43 How have Billy's employment rights been affected **and** how might this impact on the rest of the working day for him and the business?
- Training has not been received so Billy is slower undertaking daily duties.
 - Breaks will be deducted from Billy's pay to reduce the wage bill on the yard.
 - Rest breaks have been missed which may lead to tiredness and unsafe working.
 - Billy is not working to his contracted hours so could be put on disciplinary procedures.

To answer questions 44, 45 and 46 you must refer to Scenario 2.

Scenario 2

Jane is a junior groom working on a competition yard during December. The horses on the yard are trained for owners to compete in high level show jumping competitions. During morning feeding Jane notices that one horse, Tommy, is behaving differently from normal. Tommy is standing in the stable and is having trouble holding his head up. He is having difficulty swallowing, has weak eyelid tone and is starting to drool. His coat is standing up on end.

- 44 What should be Jane's **first** responsibility when seeing Tommy in the stable?
- Inform the yard manager of Tommy's behaviour.
 - Call Tommy's owner to ask if the behaviour is normal.
 - Tie Tommy up tightly to help hold his head up.
 - Move Tommy to a quiet stable so he can rest.

45 Which of the following rugs would be **best** for Tommy in this situation?

a



Source: www.bridlesandbits.com/

b



Source: www.ebay.co.uk/itm//172007056004

c



Source: www.redpostequestrian.co.uk/

d



Source: www.ebay.co.uk/itm/-/251047370571

46 The vet has arrived and diagnosed Tommy with botulism.

Which of the following represents the **best** immediate course of action for Tommy to maximise his welfare?

- a Administer antiviral medication.
- b Administer a worming treatment.
- c Administer antifungal medication.
- d Administer an antitoxin treatment.

To answer questions 47, 48, 49 and 50 you must refer to Scenario 3.

Scenario 3

A horse, Frodo, has been brought to a rescue centre having been left tethered in a field for a long period of time. Frodo is underweight and is going to be placed on box rest, in isolation for a 2-week period. Frodo was collected without any paperwork and his past training and education are unknown. William is a groom working on the yard and has been given the responsibility of assisting with the immediate care for Frodo.

The vet visits the centre regularly once a month to ensure all the horse paperwork complies with legislation and to carry out detailed routine health checks.

47 What paperwork would the vet need to complete during the first routine vet visit for Frodo **and** what temperature would be expected if the horse was in good health?

	Paperwork	Temperature
a	Horse passport	34.5°C
b	Insurance documents	34.5°C
c	Horse passport	37.5°C
d	Insurance documents	37.5°C

48 Which of the following diets would be the **most** appropriate to give to Frodo when he comes onto the yard?

	Forage	Concentrate
a	Ad lib hay	Low heating, high oil cube
b	Ad lib hay	High starch, competition cube
c	Restricted haylage	High starch, competition cube
d	Restricted haylage	Low heating, high oil cube

49 Which of the following procedures must William undertake while the horse is stabled to maintain the working environment?

- a Order more feed and bedding for the yard.
- b Wash hands after dealing with the horse.
- c Ensure the horse is turned out daily.
- d Fill in the risk assessment every day.

50 Which of the following would be the **best** method to assess Frodo's movement and gait after the 2 week box rest period?

- a Horse walker.
- b In the field.
- c Observe in stable.
- d Loose schooling.

NOW GO BACK AND CHECK YOUR WORK

- **IMPORTANT -**

Are the details at the top of the answer sheet correct?

Have you filled in your answers in INK in the appropriate boxes on the answer sheet?