



0172-526 MARCH 2022

Level 2 Technical Certificate in Equine Care

Level 2 Equine Care – Theory Exam (1)

Friday 18 March 2022
09:30 – 11:30

You should have the following for this examination

- a multiple-choice answer sheet
- a pen with black or blue ink

This question paper is the property of the City and Guilds of London Institute and is to be returned after the examination.

Read the following notes before you answer any questions

- You **must** use a pen with black or blue ink to complete **all** parts of the answer sheet.
- Check that you have the correct answer sheet for the examination.
- Check that your name and candidate details are printed correctly at the top of your answer sheet.
- Inform the invigilator if your name or examination details are not correct.
- Each question shows **four** possible answers (lettered 'a', 'b', 'c' and 'd'); only **one** is correct.
- Decide which **one** is correct and mark your answer on the **answer sheet** with your pen.

For example if you decide 'a' is correct, mark your answer like this

101	<input checked="" type="radio"/>	<input type="radio"/>	<input type="radio"/>	<input type="radio"/>
	Cancel	Cancel	Cancel	Cancel

If you want to change your answer, cancel your first choice by filling in the 'cancel' box below the circle like this

101	<input checked="" type="radio"/>	<input type="radio"/>	<input type="radio"/>	<input type="radio"/>
	Cancel	Cancel	Cancel	

Then mark the answer which you have now decided is correct. For example if you now decide 'c' is correct, mark your answer like this

101	<input checked="" type="radio"/>	<input type="radio"/>	<input checked="" type="radio"/>	<input type="radio"/>
	Cancel	Cancel	Cancel	

Any other marks on the form may invalidate some of your answers.

- Any calculations or rough working can be done on the question paper.
- Attempt all questions. If you find a question difficult, leave it and return to it later.

This paper contains 50 questions. Answer them using the 'boxes' numbered 1 to 50 on the answer sheet.

- 1 Which of the following causes strangles in horses?
 - a Bacteria.
 - b Fungus.
 - c Virus.
 - d Parasite.

- 2 Which of the following shows the normal temperature range for an adult horse at rest?
 - a 36 – 37 °C
 - b 37.5 – 38.5 °C
 - c 38 – 39 °C
 - d 39.5 – 40.5 °C

- 3 Which of the following is classed as a behavioural disorder/stereotypical behaviour?
 - a Head shy.
 - b Crib biting.
 - c Rearing.
 - d Pawing.

- 4 Which of the following is a disorder that commonly affects the feet of horses?
 - a Sweet itch.
 - b Anorexia.
 - c Mange.
 - d Laminitis.

- 5 Which of the following items should be included in a horse emergency first aid kit?
 - a Worming records.
 - b Veterinary contact details.
 - c Dental records.
 - d Exercise plan.

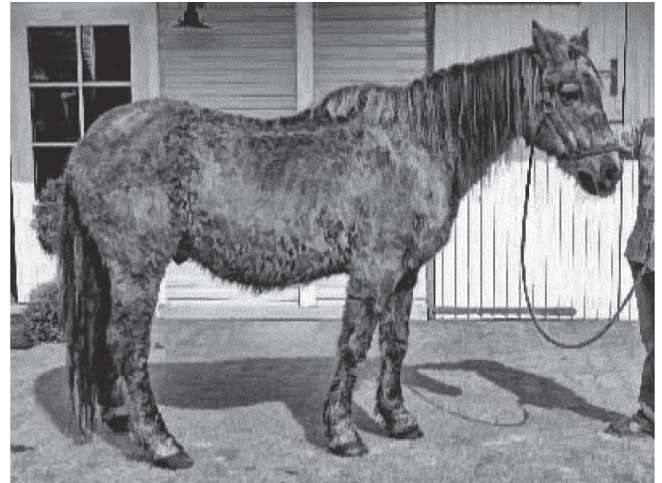
- 6 Which of the following is a health concern in horses?
 - a Resting a front foot in the stable.
 - b Respiration of 10 bpm.
 - c Coat lying flat with a shine.
 - d Bright clear eyes.

- 7 For which of the following health issues would a topical treatment be used?
 - a Laminitis.
 - b Ringworm.
 - c Strangles.
 - d Influenza.

- 8 Which of the following is a welfare need?
 - a Need for a suitable diet.
 - b Need for suitable insurance.
 - c Need for outside stabling.
 - d Need for a physiotherapist.

- 9 Which of the following shows the symptoms of strangles?
 - a Swollen lower limbs and increased pulse.
 - b Reduced temperature and flaky skin.
 - c Swollen lymph nodes and nasal discharge.
 - d Reduced feed intake and bloated stomach.

- 10 Which of the following is caused by a virus?
 - a Influenza.
 - b Mange.
 - c Ringworm.
 - d Equine metabolic syndrome.



Source: <http://clccharter.org/>

Figure 1

- 11 Which of the following is the horse in Figure 1 **most** likely suffering from?
 - a Influenza.
 - b Strangles.
 - c Mange.
 - d Cushing's.

- 12 Which of the following may require a horse to be euthanised on welfare grounds?
 - a Acute laminitis.
 - b Rain scald.
 - c Mange.
 - d Lice.

- 13 Which of the following is the **most** suitable method to improve the welfare of a horse that crib bites?
- Use an anti-crib collar to prevent the behaviour.
 - Change the bedding from shavings to straw.
 - Reduce the amount of food the horse is given.
 - Provide more forage and turnout.
- 14 Which of the following first aid items should be used to treat a foot abscess?
- Poultice.
 - Sponge.
 - Cotton wool.
 - Sterile dressing.
- 15 Which of the following management techniques will aid in preventing laminitis in a horse prone to the condition?
- Ensure the horse is given four large hard feeds a day.
 - Ration availability of lush grass and increase access slowly.
 - Provide constant access to grazing in summer.
 - Ensure all vaccinations are up to date.
- 16 Which of the following factors may influence the results of a routine trot up during a health check?
- Poor light, slippery surface, horse height.
 - Owner's presence, previous exercise, feeding needs.
 - Only one person available, slippery surface, horse behaviour.
 - Feeding needs, horse behaviour, poor light.
- 17 Which of the following circumstances would mean a horse needs to be housed apart from other horses?
- The horse requires a specialist diet.
 - The horse is a chronic weaver.
 - The horse has degenerative joint disease.
 - The horse has influenza.
- 18 Which of the following is the responsibility of all employees on a yard?
- To maintain the safety of the yard.
 - To organise staff holiday rotas.
 - To order feed supplies.
 - To improve marketing strategy.
- 19 Which of the following is the **most** likely reason a yard will provide appropriate rest breaks for staff?
- To improve staff attendance and happiness.
 - To reduce the need for risk assessments.
 - To ensure staff performance and welfare.
 - To reduce the need for continuous training.
- 20 Which of the following factors determines an employee's rate of minimum wage?
- Gender.
 - Experience.
 - Qualifications.
 - Age.
- 21 Which of the following are covered in an employee's contract of employment?
- BHS rules, grievance list, employment period.
 - Employment conditions, employment rights, job responsibilities.
 - Client details, employee classification, termination terms.
 - Sick pay list, employment period, yard feeding plan.
- 22 Which of the following would be classed as a breach of the employment rights of staff on a yard?
- A 10-hour working day with a 20-minute rest period.
 - Paid holiday of 5.6 weeks per year.
 - An hourly pay rate of £10.63 per hour.
 - A yard with risk assessments and a health and safety policy.

23 **Statement 1**
Punctuality is the responsibility of the individual employee.

Statement 2
A faulty horse walker must be reported to a senior member of staff.

Which of the following options is correct for **both** statements?

	Statement 1	Statement 2
a	False	False
b	False	True
c	True	False
d	True	True



Source: <https://www.horseandhound.co.uk/>

Figure 2

24 Which type of saddle is shown in Figure 2?

- a Jumping.
- b General Purpose.
- c Showing.
- d Dressage.

25 Which of the following pieces of tack is used to prevent the saddle from slipping back?

- a Breast plate.
- b Standing martingale.
- c Cavesson.
- d Draw reins.

26 What family of bit does a kimblewick belong to?

- a Double.
- b Snaffle.
- c Bitless.
- d Pelham.



<https://www.tudorroseequine.co.uk>

Figure 3

27 Which type of bandage is shown in Figure 3?

- a Tail.
- b Travel.
- c Exercise.
- d Stable.

28 Which of the following is the **most** time efficient **and** safest method of providing water in the field?

- a Automatic water trough.
- b Large bucket.
- c Pond.
- d Stream.



Source: <http://www.glassongrain.co.uk/>

Figure 4

29 Identify the feedstuff in Figure 4.

- a Competition mix.
- b Fibre nuts.
- c Chaff.
- d Barley.

- 30 Which of the following is a rule of feeding for horses?
- a Provide horses with restricted fibre.
 - b Exercise horses straight after feeding.
 - c Ensure horses are given water after feed.
 - d Feed horses by weight not volume.

- 31 **Statement 1**
Increased workload will reduce a horse's need for energy.

Statement 2
Fibre is the least important component of a horse's diet.

Which of the following options is correct for **both** statements?

	Statement 1	Statement 2
a	False	False
b	False	True
c	True	False
d	True	True

- 32 Which of the following is the **main** benefit of ensuring horses are fed the correct forage to concentrate ratio in their diets?
- a It promotes a healthy digestive tract.
 - b It saves money on feeding bills.
 - c It allows horses to gallop faster.
 - d It increases the need for exercise.
- 33 Which of the following would be the **most** appropriate to feed to an obese horse?
- a Ad lib haylage.
 - b Rice bran.
 - c Competition mix.
 - d Soaked hay.



Source: <https://www.ddracing.co.uk/>

Figure 5

- 34 Which exercise method is shown in Figure 5?
- a Loose schooling.
 - b Lungeing.
 - c Horse walker.
 - d Treadmill.
- 35 Which of the following injuries would **most** likely require a horse to be lunged?
- a Ligament damage.
 - b Tendon injury.
 - c Splint.
 - d Girth gall.
- 36 What would be the **most** beneficial reason to lunge a horse while its rider is away?
- a Lungeing allows the horse to maintain its cardiovascular fitness.
 - b Lungeing allows for the fit of the saddle to be checked.
 - c Lungeing encourages the horse to relax.
 - d Lungeing improves the jumping ability.
- 37 Why is a horse walker a beneficial form of exercise when turnout is unavailable on the yard?
- a It reduces the need for supplements in the feed.
 - b It allows horses to exercise in all three paces.
 - c It reduces the energy bills for the yard.
 - d It allows multiple horses to be exercised at the same time.

- 38 Which of the following is the **main** benefit of long reining a young horse before backing the horse?
- a Improves the horse's awareness of the rider.
 - b Saves money on staff time and equipment.
 - c Develops the horse's confidence and steering.
 - d It can be undertaken by any member of staff on the yard.
- 39 What is the **most** important reason for controlling the lunge line carefully when lungeing a horse?
- a To ensure the safety of the person lungeing.
 - b To prevent the horse from spooking at the lunge line.
 - c To ensure the circle is small enough for the horse.
 - d To prevent the horse from cantering on the lunge.

To answer questions 40, 41, 42 and 43 you must refer to Scenario 1.

Scenario 1:

A new horse has been brought onto a yard in December. It has arrived very stressed and covered in sweat. The horse is a four-year-old Thoroughbred which is highly strung. The horse is fully clipped and is stabled in an open fronted, outdoor loose box.

During the horse's routine health check when it first enters the yard, its TPR reads: temperature 39.8°C, pulse 33 beats per minute, respiration rate 11 breaths per minute. The skin issue shown in Figure 6 is also noticed.

The groom assigned to look after the horse has never dealt with young horses before and feels very nervous as the horse's behaviour in the stable can be very unpredictable.



Source: <https://equestrianbootsandbridles.com/>

Figure 6

40 Which of the following rugs would be the **most** suitable for the horse in the stable after arrival?

a



Source: <http://www.equestrianguru.co.uk/>

b



Source: <http://roselawnlutheran.org/>

c



Source: <https://www.thermatex.co.uk/>

d



Source: <https://www.riding-gear.co.uk>

41 What action should be taken on receiving the TPR results?

- a Remove the horse's rug and turn out in the field.
- b Isolate the horse as a precaution and call the vet.
- c Administer wormer and call the vet.
- d Complete health check and turn out in the field.

42 What would be an appropriate treatment for the skin condition?

- a Anti-fungal wash.
- b Antibiotic injection.
- c Anti-viral medication.
- d Non-steroidal anti-inflammatory granules.

43 How have the groom's employment rights been affected **and** what action should be taken?

- a Inappropriate working environment due to winter temperatures. The groom should take more rest breaks.
- b No appropriate training which could result in failing probation period. The groom should work with the horse with confidence.
- c Inappropriate working environment due to winter temperatures. The groom should request additional PPE.
- d No appropriate training which could result in injury. The groom should inform the manager of concerns.

To answer questions 44, 45 and 46 you must refer to Scenario 2.

Scenario 2:

Amy is an assistant working in a busy equine retail shop.

A customer wants to purchase feed and is enquiring about methods of feeding forage to help her horse that is very overweight and on a diet. Amy has been asked to carry the feed to the customer's car by the manager. The feed is in a large bag which is heavy and Amy struggles to lift it.

The manager has asked Amy to create a display in a shop window with Pelham bits and tendon boots to attract new customers.

44 What would be the **best** course of action when Amy struggles to lift the feed?

- a Carry on with moving the feed as this is part of her role.
- b Drag the feed across the carpark to the customer's car.
- c Inform the customer that the bag is too heavy and serve someone else.
- d Ask the manager for help with lifting and carrying the feed.

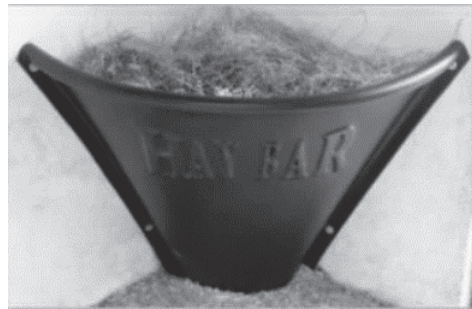
45 Which of the following methods of feeding forage is the **most** appropriate to recommend to the customer?

a



Source: <https://www.jefferspet.com/>

b



Source: <https://www.thepaddockpantry.co.uk/>

c



Source: <http://www.chelfordfarmsupplies.co.uk>

d



Source: <http://equiphorse.com/>

46 Which of the following would be the **best** combination of bits and boots for the window display?

a



Source: <http://www.definitelydressage.com/>

Source: <https://www.theequinewarehouse.ie/>

b



Source: <https://www.decathlon.co.uk/>

Source: <http://www.dalmarboots.co.uk/>

c



d



To answer questions 47, 48, 49 and 50 you must refer to Scenario 3.

Scenario 3

Joe is a groom working on a showjumping yard. A number of horses are traveling to a one-day competition. Joe has been asked to gather and pack the necessary items for travel to the competition.

While the horses and rider are away at the competition there are 10 horses left in Joe's care. All the horses will need gentle exercise and, as part of their regular preventative health care plan, need treating with an anthelmintic.

One of the 10 horses has been out of work due to an injury and requires a medication that cannot be taken by horses that are competing.

- 47 Which of the following lists contains the horse items necessary for the competition?
- a Health check records, first aid kit, turn out rugs, farriery kit.
 - b Veterinary records, hard feed, wormers, stable rug.
 - c Passport, forage, tack, water.
 - d Worming records, tack, supplements, exercise sheet.
- 48 Which of the following is the **most** appropriate way for Joe to exercise the remaining horses?
- a Horse walker.
 - b Schooling.
 - c Lungeing.
 - d Loose jumping.

49 Which of the following shows both the correct reason **and** preparation for carrying out the requirements of the healthcare plan?

	Reason	Preparation
a	Preventing ringworm	Weigh the horse to calculate correct dosage
b	Preventing ringworm	Administer after exercise to help absorption
c	Preventing worms	Weigh the horse to calculate correct dosage
d	Preventing worms	Administer after exercise to help absorption

50 Which of the following lists of factors must Joe consider when feeding the injured horse on the yard?

- a Using individual feed buckets, environment, workload, reducing forage ration.
- b Workload, increase forage ration, using individual feed buckets, storage of medication.
- c Environment, behaviour, increase concentrate ration, order in which horses are fed.
- d Behaviour, storage of medication, order in which horses are fed, reducing forage ration.

NOW GO BACK AND CHECK YOUR WORK

- **IMPORTANT -**
Are the details at the top of the answer sheet correct?
Have you filled in your answers in INK in the appropriate boxes on the answer sheet?