

Level 2 Essential Application of Number Skills

Sample confirmatory test 5

Maximum duration: 45 minutes

Important note

This is a sample confirmatory test, developed jointly by the four Essential Skills Wales awarding bodies (Agored Cymru, City & Guilds, Pearson and WJEC).

This sample test provides an indication of the likely format and structure of the live confirmatory tests.

A separate document, containing the answer keys (correct answers) and specification references is also available.

This confirmatory test consists of 20 multiple choice questions.

Questions 1 to 5 are about a weekend break

1 A family is planning to stay overnight in a hotel. These are the choices they have found.

Hotel	Rating	Wifi	TV	Double Room	Single Room
Beachdale	☆☆☆☆	✓	✓	£85.00	£55.00
Commodore	☆☆☆	✓	✗	£55.00	£40.00
Delton	☆☆☆	✗	✓	£47.00	£28.00
Easby	☆☆☆	✓	✗	£53.00	£45.00
Farrenvale	☆☆	✓	✓	£35.00	£32.00
Glen Marsh	☆☆	✓	✓	£35.00	£35.00

They want to stay in a hotel with more than a two star rating, with WiFi connection. They want to book one double room and one single room.

Which hotel is the cheapest?

- a Commodore
- b Delton
- c Easby
- d Farrenvale

2 This is the timetable of the train service they will use.

Departure times from Beldon

Beldon	07:45	09:45	11:45	and then	21:45
Crossbridge	08:18	10:18	12:18	every 2	22:18
Bentley Vale	08:37	10:37	12:37	hours	22:37
Wendsea	09:10	11:10	13:10	until	23:10

How long is the train journey from Crossbridge to Wendsea?

- a 42 mins
- b 52 mins
- c 1 hr 15 mins
- d 1 hr 25 mins

- 3 The family are travelling from Crossbridge to Wendsea.
They need to arrive before 4:30pm.
They will use this train timetable.

Departure times from Beldon

Beldon	07:45	09:45	11:45	and then	21:45
Crossbridge	08:18	10:18	12:18	every 2	22:18
Bentley Vale	08:37	10:37	12:37	hours	22:37
Wendsea	09:10	11:10	13:10	until	23:10

What is the latest train they can get?

- a 1:45 pm
 - b 2:18 pm
 - c 3:18 pm
 - d 4:18 pm
- 4 The family wants to go to the theatre. These are the ticket prices:

Adult tickets £18
Each child gets a discount of $\frac{1}{3}$ off the adult price.

There are 2 adults and 1 child.

What is the total cost of the tickets?

- a £42
 - b £48
 - c £60
 - d £66
- 5 The show starts at 7:30 pm.
There are 2 parts of the show.
Each part of the show lasts for 55 minutes.
There is an interval of 20 minutes.

At what time does the show finish?

- a 9:00 pm
- b 9:20 pm
- c 9:40 pm
- d 10:00 pm

Questions 6 to 11 are about a craft fair.

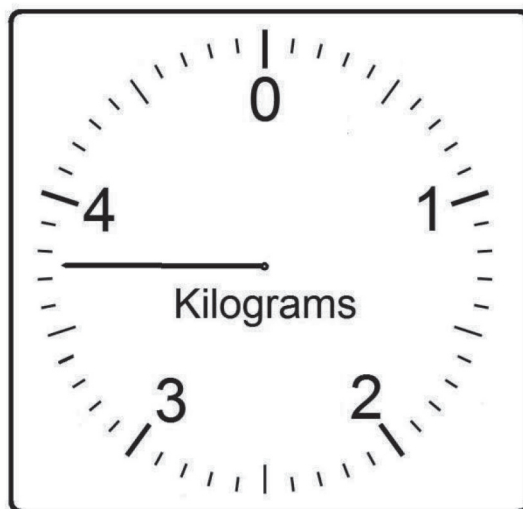
6 This table shows the number of gift boxes sold at a craft fair.

Month	Number of Boxes	
	Standard	Large
May	18	22
June	26	18
July	22	20

What is the difference between the mean number of standard boxes sold per month and the mean number of large boxes sold per month?

- a 0
- b 1
- c 2
- d 3

7 The gift boxes are weighed before they are packaged.



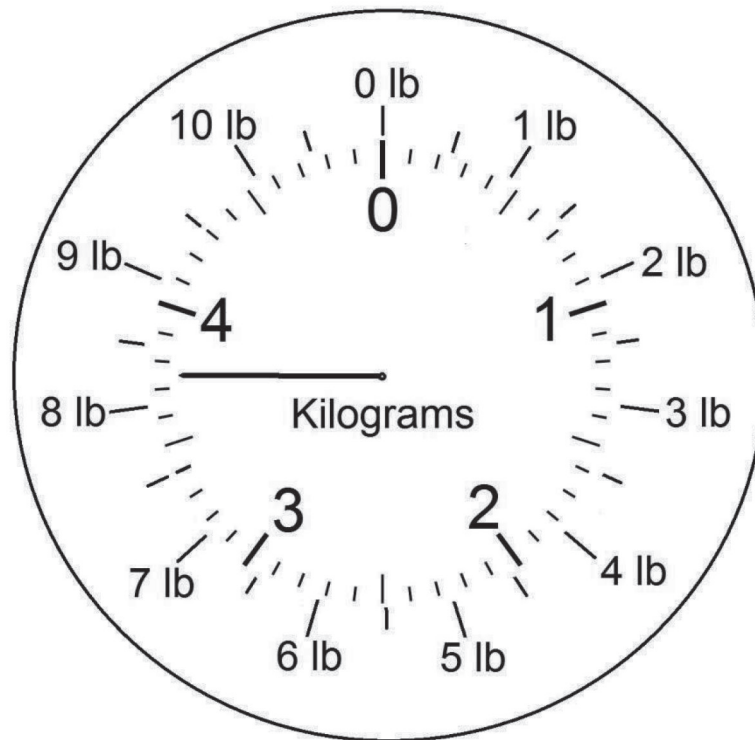
This diagram shows the weight of **100** gift boxes.

What is the weight of **one** gift box **in grams**?

- a 3.75 g
- b 4.25 g
- c 37.5 g
- d 42.5 g

8 Sweets are put into the gift box.

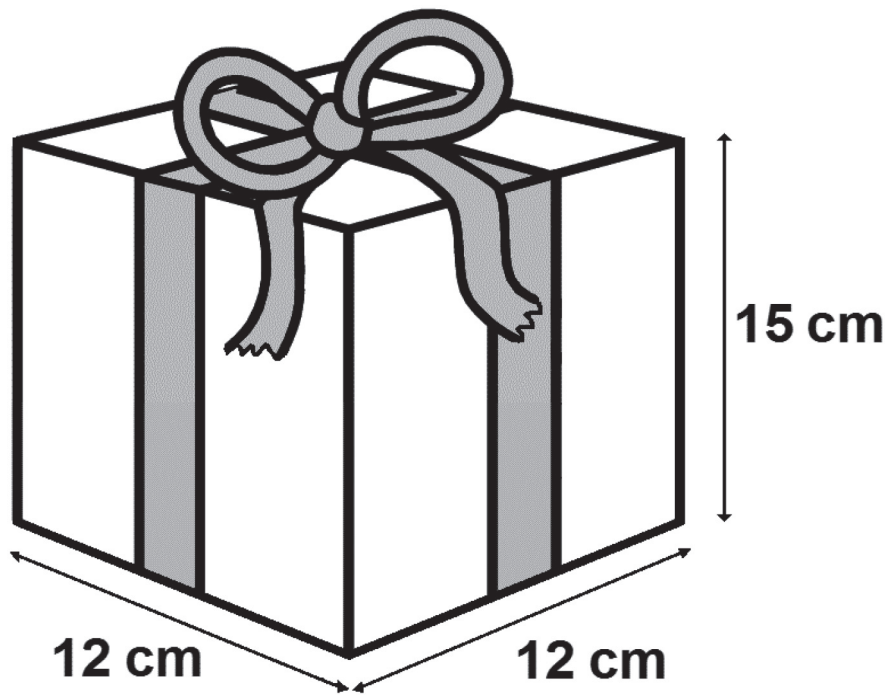
A bag of sweets weighs 5 pounds.



Using this diagram, what is 5 pounds (lb) in kilograms?

- a 2.2 kg
- b 2.27 kg
- c 2.37 kg
- d 3.73 kg

- 9 This diagram shows the size of a gift box.



What is the volume of the gift box?

- a 39 cm^3
 - b 180 cm^3
 - c 216 cm^3
 - d 2160 cm^3
- 10 Each gift box contains 28 chocolates and 21 toffees.

What is the ratio of chocolates to toffees in the gift box?

- a 3:2
- b 7:3
- c 4:3
- d 3:4

- 11 Necklaces are made to sell at the craft market. This formula is used to calculate how many beads are used on a necklace.

$$n = \frac{c}{b} - 2.5$$

where n = number of beads

c = length of the necklace (cm)

b = length of bead (cm)

One necklace is 57 cm long.

The beads used are 1.2 cm long.

How many beads are used on this necklace?

- a 42
- b 45
- c 47
- d 48

Questions 12 to 15 are about paying bills.

Your monthly wage is £400

Your bills for the month total £240.

12 What fraction of your monthly wage goes on bills?

a $\frac{3}{5}$

b $\frac{1}{2}$

c $\frac{3}{4}$

d $\frac{2}{3}$

13 Your annual car insurance costs £335

The insurance company allows you to make one single payment or 12 monthly instalments of £32.65

How much more in total does it cost to pay in 12 monthly instalments?

a £46.80

b £56.80

c £64.80

d £66.80

14 You receive a bill for goods you have purchased from the USA. This is the exchange rate.

1 British Pound = 1.45 US Dollars

The bill is for 29 dollars

How much is 29 dollars in pounds?

a £42.05

b £38.05

c £20.00

d £15.00

15 This formula is used to find the total cost of electricity used in one quarter (3 months).

$$t = \frac{np}{100} + \frac{s}{4}$$

where t = total cost (£)

n = number of units used

p = cost per unit (pence)

s = annual standing charge (£)

You have used 800 units in this quarter.

The cost per unit is 10.35 pence.

The annual standing charge is £90

What is the cost of electricity for this quarter?

- a £43.20
- b £105.30
- c £172.80
- d £850.50

Questions 16 to 20 are about decorating a bedroom.

16 You want to put up a shelf in the bedroom.

Use this information:

$$1 \text{ foot (ft)} = 12 \text{ inches (in)}$$

$$1 \text{ inch (in)} = 2.5 \text{ cm}$$

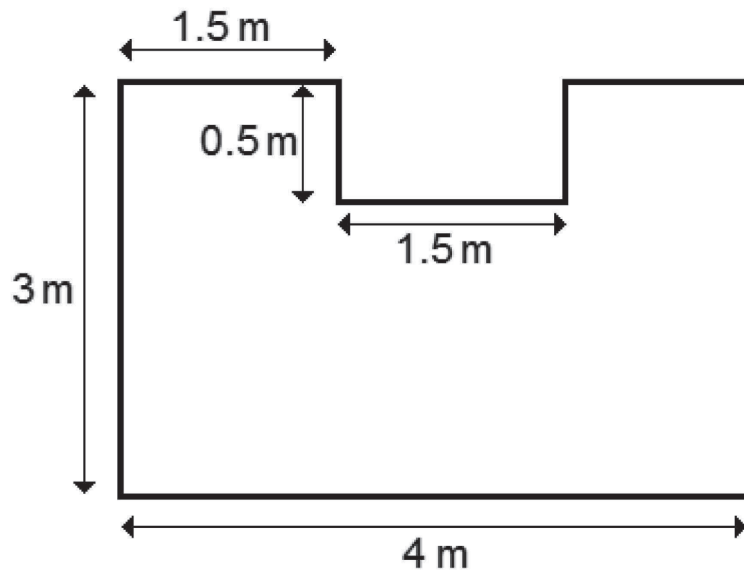
The length of the shelf is 3 ft 6 in.

What is the length of the shelf in cm?

- a 51 cm
- b 96 cm
- c 105 cm
- d 108 cm

17 You want to put a new carpet in the bedroom.

What is the area of the bedroom floor?



- a 10 m^2
- b 10.5 m^2
- c 11.25 m^2
- d 12.75 m^2

18 The price of the carpet is reduced by 15%.

Which fraction is the same as 15%?

- a $\frac{3}{20}$
- b $\frac{1}{5}$
- c $\frac{3}{10}$
- d $\frac{3}{5}$

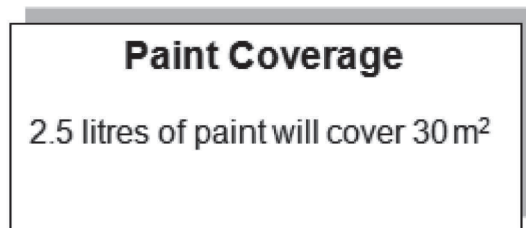
19 The full price of the carpet is £3.60 per square metre.

The price is reduced by 15% in a sale.

What is the price per square metre in the sale?

- a £3.45
- b £3.24
- c £3.16
- d £3.06

20 You want to paint the bedroom walls.



You need enough paint to cover 75 m²

How much paint do you need?

- a 4.25 litres
- b 5.5 litres
- c 6.25 litres
- d 7.0 litres

NOW GO BACK AND CHECK YOUR WORK

- **IMPORTANT -**
Are the details at the top of the answer sheet correct?
Have you filled in your answers in INK in the appropriate boxes on the answer sheet?