

# Functional Skills Mathematics (4748) Entry 1 Sample Assessment

## Candidate's paper – Non-calculator Craft Shop

**Time allowed – 25 minutes**

Marks: 8

Name: \_\_\_\_\_

City & Guilds Enrolment Number: \_\_\_\_\_

Date of registration: \_\_\_\_\_

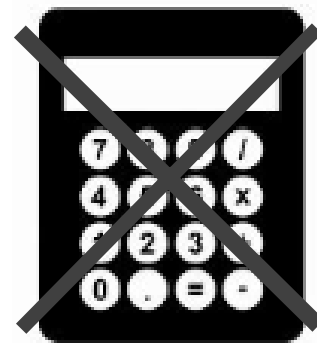
Date of assessment: \_\_\_\_\_

### You will need

- a pen with black or blue ink
- a pencil
- a rubber
- a ruler.

You may use a dictionary.

You must **not** use a calculator.



### Instructions

- Read each question carefully.
- Answer **all** the questions.

### Candidate's declaration:

I confirm that this assessment is my own work.

Candidate's signature \_\_\_\_\_

Date \_\_\_\_\_

## Non-calculator paper

There are **8** marks available.

You must **not** use a calculator.



Q1

Work out  $14 + 5 =$

.....

1 mark

Q2

Write these months of the year in order.  
Start with **May**.

May

November

September

August

.....

1 mark

Q3

Tick the longest table.



A



B



C



D

1 mark

Q4

$9 \square 7 = 16$

Write the correct symbol to finish the calculation.

1 mark

Q5



Jug A



Jug B

Jug A has ..... Jug B.

Choose the correct words to finish the sentence.

- A the same amount of water as
- B less water than
- C more water than
- D an equal amount of water to

1 mark

Q6 The craft shop has a delivery of wooden ducks.

The ducks are all different heights.

13cm

8cm

5cm

20cm

14cm

Write these heights in order.

Start with the **biggest** first.

.....cm

.....cm

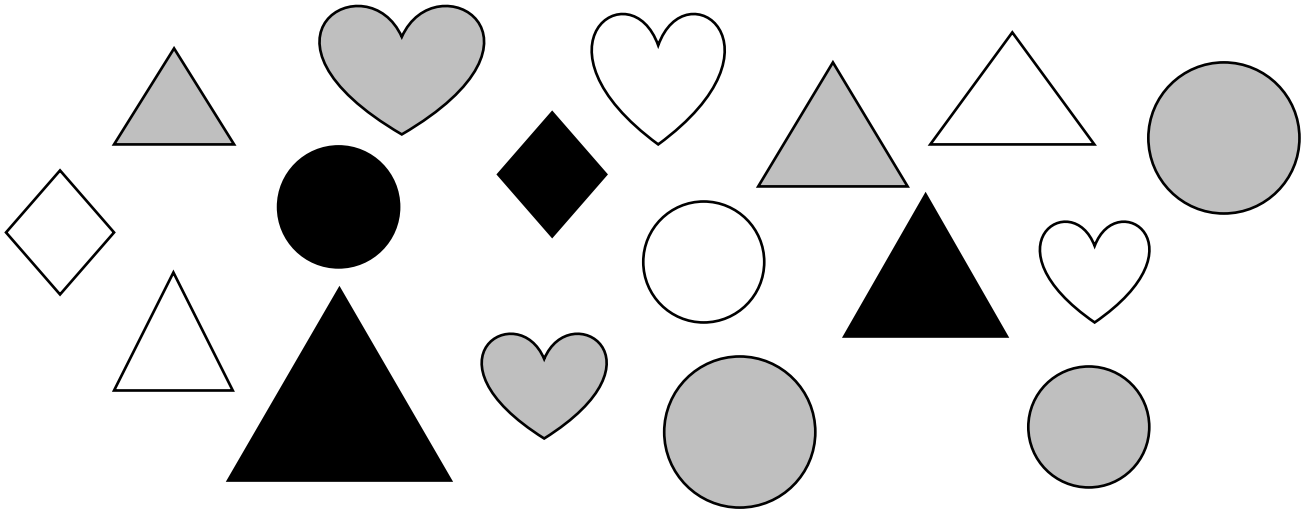
.....cm

.....cm

.....cm

1 mark

**Q7** The craft shop has these shapes to make into gift tags.



The owner wants to use the circle shapes.

Show which shapes she will use.  
**Tick them.**

**1 mark**

**Q8** A customer buys a sheet of wrapping paper for 15p  
She pays with a 20p coin.  
This is how she works out how much change she should get.

$$20p - 15p = 5p$$

Show how the customer can check her answer.

Show your check here.

**1 mark**

**Total marks: 8**

**End of non-calculator paper.**

**This page is intentionally blank**

# Functional Skills Mathematics (4748) Entry 1 Sample Assessment

## Candidate's paper – Calculator allowed Craft Shop

**Time allowed – 65 minutes**

Marks: 24

Name: \_\_\_\_\_

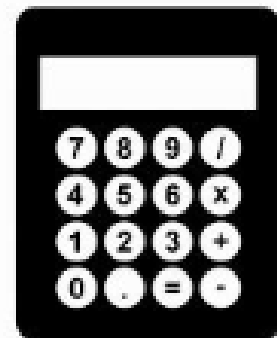
City & Guilds Enrolment Number: \_\_\_\_\_

Date of registration: \_\_\_\_\_

Date of assessment: \_\_\_\_\_

### You will need

- a calculator
- a pen with black or blue ink
- a pencil
- a rubber
- a ruler.



You may use a dictionary.

### Instructions

- Read each question carefully.
- Answer **all** the questions.

### Candidate's declaration:

I confirm that this assessment is my own work.

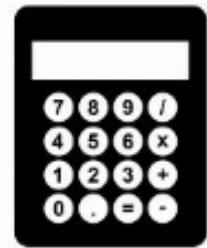
**Candidate's signature** \_\_\_\_\_

**Date** \_\_\_\_\_

## Calculator paper

There are **24** marks available.

You may use a calculator.





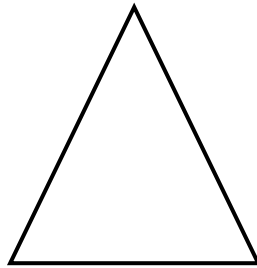
**Q1**

What is **20 take away 13** ?

.....

**1 mark**

**Q2**



What is the name of this shape?

.....

**1 mark**

Q3



Tick all the 1p coins.

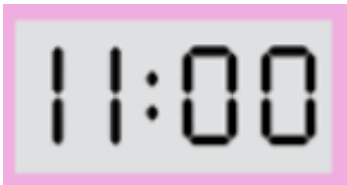
1 mark

**Q4** A man visits a craft shop.

This is the sign on the door.



The man checks the time on his watch.



**a** Is the shop open now?  
**Give a reason for your answer.**

**Yes/No**.....

**Reason** .....

.....

.....

**2 marks**

**b** The shop assistant tells the man the craft shop does not open on Sunday.

How many days of the week is the shop open?

..... days

**1 mark**

**Q5** The craft shop sells these model animals.

A man wants to buy an owl.

This is the price list.



**a** How much does the man need to pay?

£.....

**1 mark**

The man has these coins.



b

Which coins will he use to pay for the owl?  
**Tick them.**

1 mark

The assistant looks for a model dog.

This is the display in the craft shop.



c

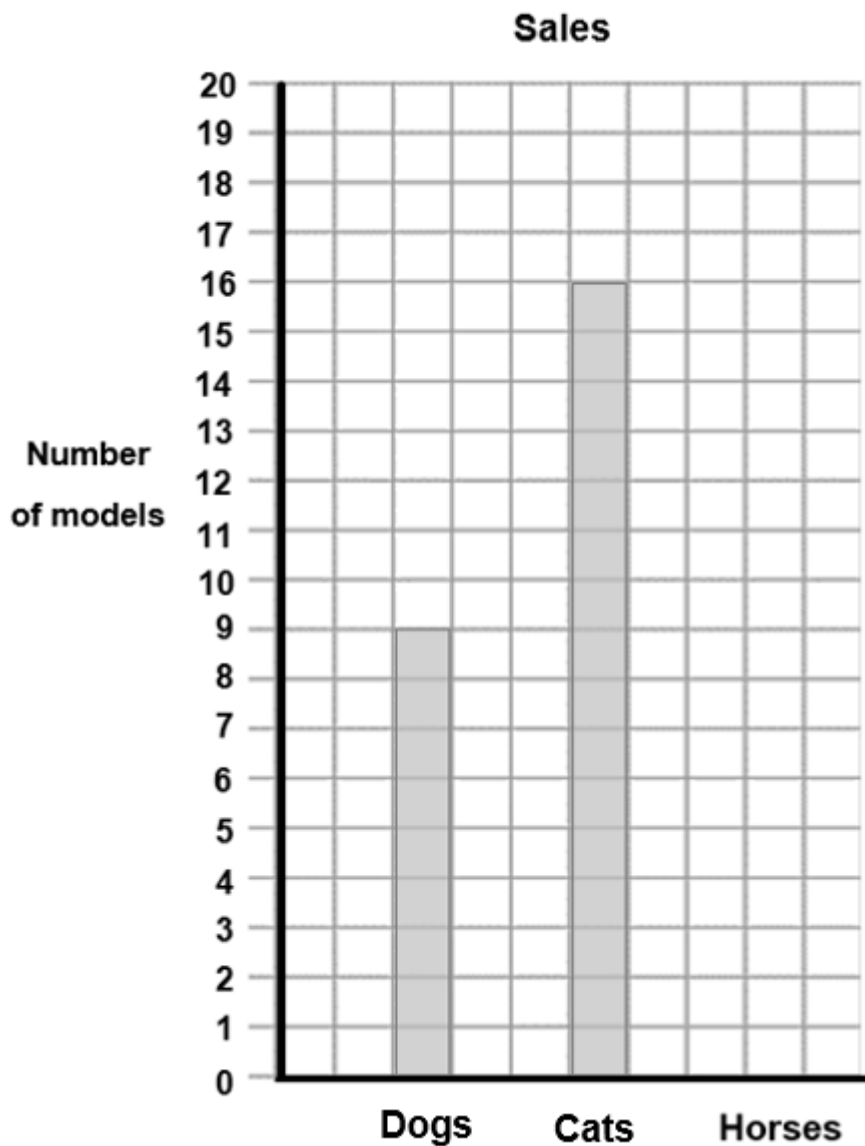
Use the picture of the display to finish this sentence.

The dogs are .....the table.

1 mark

The manager wants a chart to show the number of model animals sold last week.

The shop sold 19 horses last week.



d

Draw in the bar for **horses**.

1 mark

**e** State one thing that the chart shows about the numbers of different models sold.

.....

.....

**1 mark**

**6** A customer wants to buy a plate to paint.  
She wants to paint the biggest plate.

She sees these plates.



**a** Tick which plate she will buy.

**1 mark**

The woman pays with this note.



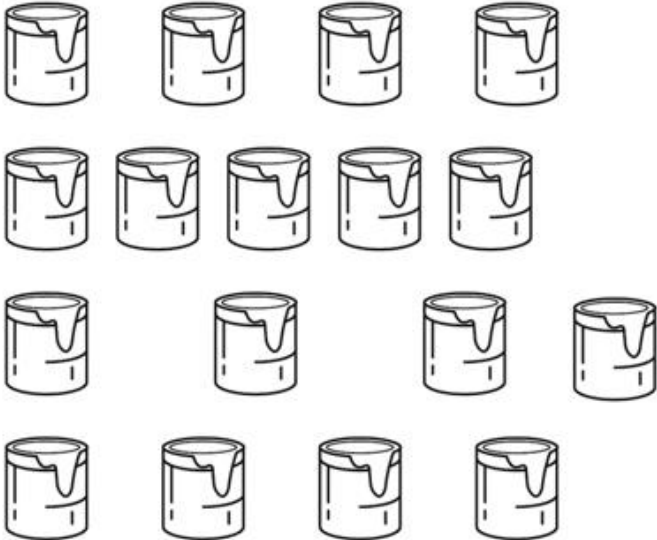
**b** How much change will she get? **Put units on your answer.**

Show your working out

Change \_\_\_\_\_

**3 marks**

The owner counts these empty pots of paint **today**.



**Yesterday** there were 8 empty pots of paint.

**c** Complete the sentences.

The owner counted ..... empty pots of paint today.

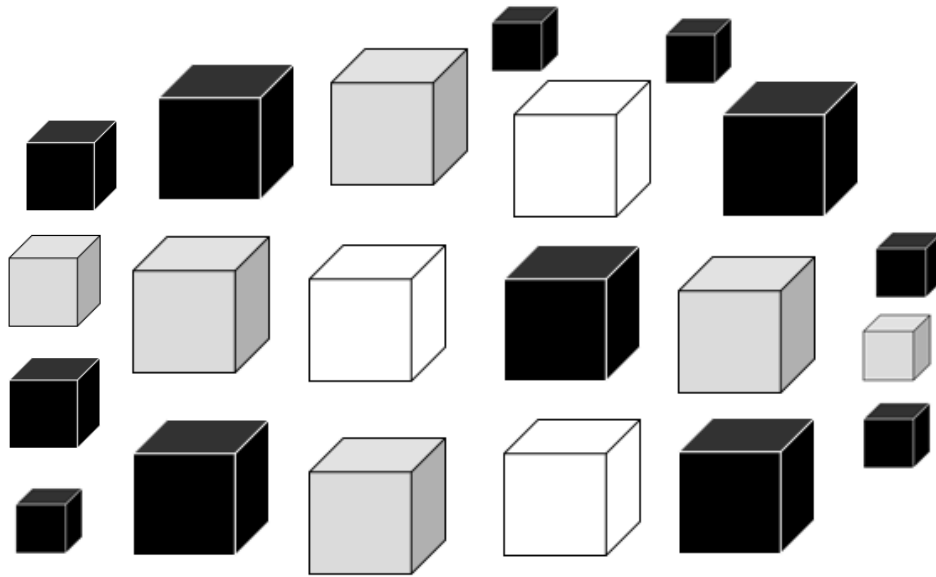
The **number** of empty pots today is ..... more than the number of empty pots yesterday.

**2 marks**



**Q7** The craft shop sells gift boxes.

Here are the boxes.



The owner asks the shop assistant how many grey gift boxes there are in the shop.

**a** What does the shop assistant tell the owner?

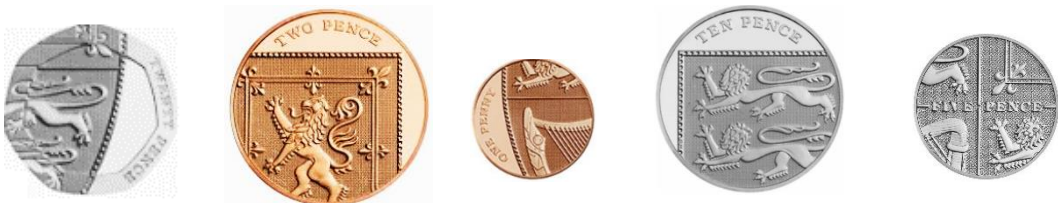
There are..... grey gift boxes.

**1 mark**

Small gift boxes cost 10p each.

A customer wants to buy one small gift box.

He has these coins.



**b** Tick the coin to use to pay for the gift box.

**1 mark**

8 The manager needs to know the number of mugs, bowls and plates sold last week.

His assistant starts to draw a tally chart to show this information.

This is the number of plates sold.



Item	Tally
Large mugs	
Small mugs	
Bowls	
Plates	

a Complete the tally chart to show the number of plates sold.

2 marks

The manager wants to know how many more small mugs were sold than large mugs.

**b** What does his assistant tell him?

Space for working.

..... more small mugs were sold

**2 marks**

The manager also wants to know how many bowls were sold.

**c** What does his assistant tell him?

.....bowls were sold

**1 mark**

**Total marks: 24**

**End of calculator paper**

**This page is intentionally blank**

---

**Published by City & Guilds**  
**5-6 Giltspur Street**  
**London**  
**EC1A 9DE**  
**[www.cityandguilds.com](http://www.cityandguilds.com)**

**City & Guilds is a registered charity**  
**established to promote education and**  
**training**